

STATE OF MICHIGAN
HOUSE OF REPRESENTATIVES



HOUSE FISCAL AGENCY

MITCHELL E. BEAN, DIRECTOR

P.O. BOX 30014
LANSING, MICHIGAN 48909-7514
PHONE: (517)373-8080 FAX: (517)373-5874
www.house.state.mi.us/hfa

GOVERNING COMMITTEE

MARC SHULMAN, CHAIR
RICK JOHNSON
BRUCE PATTERSON
A. T. FRANK, V-C
SAMUEL BUZZ THOMAS, III
GILDA JACOBS

September 2002

TO: Members of the House of Representatives
FROM: Mitchell E. Bean, Director
REGARDING: Revenue Sharing Payments to Local Governments

This report provides information on Michigan's revenue sharing payments made to local units. Statutory and constitutional appropriations are discussed in the **Overview**. Historical background is provided for changes in revenue sharing payments since FY 1990-91; formulas used to distribute revenue sharing appropriations under current law are explained.

The Table at the end of the report provides revenue sharing payment detail for final FY 2001-02, and the enacted estimate for FY 2002-03 (including one-time grants). Estimates shown in this document are based on the May 2002 Consensus Revenue Estimating Conference agreement.

Rebecca Ross, HFA Senior Economist, and Jim Stansell, HFA Economist, provided the information presented in this report. Jeanne Dee, Administrative Assistant, prepared the report for publication.

I am available, as is Jim Stansell, to answer questions regarding revenue sharing payments. Please do not hesitate to call if we can be of further assistance.

Mitchell E. Bean
Director

OVERVIEW

Revenue sharing payments are state funds appropriated to approximately 1,880 local units to spend as unrestricted revenue. Total revenue sharing appropriations for FY 2001-02, and FY 2002-03 are shown in Table 1. In FY 2001-02, revenue sharing payments to cities, villages, and townships (CVTs) and counties totaled \$1,517.3 million. For FY 2002-03, the appropriation calls for a reduction in the statutory component of \$120.6 million below its fully-funded level; this drops the statutory component and reduces total revenue sharing payments to \$1,523.6 million.

Although the appropriation for FY 2002-03 is only slightly greater than FY 2001-02, the methodology for calculating revenue sharing payments is such that some local units of government will receive increases while others will see decreases. To offset this outcome, an additional \$9.9 million has been set aside to provide one-time grants to local units. These grants are distributed in such a way as to minimize the reduction that any local unit might face in its revenue sharing payment.

Table 1
CONSTITUTIONAL AND STATUTORY REVENUE SHARING APPROPRIATIONS
(Millions of Dollars)

	<u>Final</u> <u>FY 2001-02</u>	<u>Enacted</u> <u>Estimate</u> <u>FY 2002-03</u>	<u>Change from FY 2001-02 to FY 2002-03</u>	
			<u>Amount</u>	<u>Percent</u>
Constitutional Share	\$649.3	\$679.4	\$30.1	4.6%
Detroit	62.2	65.1	2.9	4.6%
Other CVTs	587.1	614.3	27.2	4.6%
Statutory Share	\$868.0	\$844.2	(\$23.8)	-2.7%
Counties	217.5	211.6	(5.9)	-2.7%
Detroit	271.7	268.8	(2.9)	-1.1%
Other CVTs	378.8	363.8	(15.0)	-4.0%
Totals	\$1,517.3	\$1,523.6	\$6.3	0.4%
Counties	217.5	211.6	(5.9)	-2.7%
Detroit	333.9	333.9	0.0	0.0%
Other CVTs	965.9	978.1	12.2	1.3%
Cities	554.1	554.7	0.6	0.1%
Villages	33.1	33.5	0.4	1.2%
Townships	378.7	389.9	11.2	3.0%
Grants to Local Units	\$0.0	\$9.9	\$9.9	n/a

In its most basic form, the revenue sharing process can be divided into two components: appropriation of funding and distribution of funding. The appropriation of funding is primarily a legislative endeavor wherein the amount of funding that will be made to local units of government is determined. Actual distribution of the funding, as set forth in 1998 PA 532, is more complex. Two major sections that follow in this publication contain a historical overview and a description of the formulas currently used to fund and to distribute revenue sharing payments.

FY 1972-73 THROUGH FY 1997-98: REVENUE SHARING HISTORICAL OVERVIEW

Revenue Sharing: FY 1972-73 — FY 1995-96

From the early 1970s through FY 1995-96, no substantial changes to the distribution formulas were made in Michigan's revenue sharing program. However, reductions from the statutory levels occurred in the 1990s.

Prior to FY 1996-97, revenue sharing sources included sales tax, income tax, single business tax, and intangibles tax revenue. Sales tax revenue was constitutionally earmarked to cities, villages, and townships (CVTs), while the other sources were statutorily earmarked to all local units. Of the total revenue sharing funds available, approximately 40% came from sales tax revenue, 35% from income tax revenue, and 25% from single business tax revenue. Intangibles tax revenue has not been included in revenue sharing payments since FY 1992-93.

Economic and state budget pressures in the early 1990s resulted in revenue sharing reductions from the statutory levels. These reductions, referred to as freeze lag reductions, began in FY 1990-91 and lasted through FY 1996-97 (see Table 2). The reduction in FY 1998-99 (discussed later in this document) is a result of the appropriations cap in total revenue sharing payments.

Revenue sharing in FY 2001-02 was reduced as part of the appropriation process, then reduced again by Executive Order 2001-9; the total reduction was \$54.0 million. The appropriation for FY 2002-03 calls for a \$120.6 million reduction from statutory revenue sharing.

Table 2
REVENUE SHARING REDUCTIONS FROM THE STATUTORY LEVEL
(Millions of Dollars)

FY 1991-92	\$112.2 *
FY 1992-93	\$45.5
FY 1993-94	\$54.5
FY 1994-95	\$67.0
FY 1995-96	\$81.3
FY 1996-97	\$84.6
FY 1997-98	\$0.0
FY 1998-99	\$23.7
FY 1999-00	\$58.6
FY 2000-01	\$0.0
FY 2001-02	\$54.0
FY 2002-03	\$120.6

**Due to different fiscal year periods (state vs local), this was a state, but not a local, reduction. As a result of forward funding, \$112.2 was shifted into the state's next fiscal year, but was postponed for local units.*

Three distribution methods were used to distribute revenue sharing payments to local units: per capita, relative tax effort (RTE), and inventory reimbursement.

PER CAPITA FORMULA was based purely on population.

RELATIVE TAX EFFORT (RTE) FORMULA was based on the amount of revenue each local unit raised compared to the statewide average. This approach was based on the concept that local governments which impose the highest tax burdens need the most assistance to meet their spending needs.

INVENTORY REIMBURSEMENT FORMULA was based on each local unit's millage rate and the 1975 state equalized value of business inventory.

These three distribution formulas were used to make revenue sharing payments to CVTs, while the counties received payments through the per capita formula and the inventory reimbursement formula. Of the total revenue sharing dollars distributed, approximately 55% were disbursed under the per capita formula, 35% under the RTE formula, and 10% under the inventory reimbursement formula.

Revenue Sharing: FY 1996-97 — FY 1997-98

A transition period occurred with Michigan's revenue sharing program in FY 1996-97 and FY 1997-98. The key components of this period are discussed below.

In FY 1996-97, the income tax, single business tax, and intangibles tax revenues were eliminated as statutory revenue sharing sources and were replaced with an additional 21.3% of sales tax revenue at the 4% rate. The statutory earmarking of sales tax revenue replaced the previous taxes at a rate that built in the continued statutory reductions. In addition to the statutory earmarking, 15% of the sales tax revenue at the 4% rate continued to be constitutionally earmarked. Beginning in FY 1996-97, the total amount for state revenue sharing payments was limited to the total amount appropriated for this purpose in the general government appropriations bills.

In FY 1997-98, minor distributional changes were implemented. The total distributed in FY 1997-98 under the RTE formula was capped at the FY 1996-97 level, with the growth above that level distributed on a per capita basis to CVTs.

Revenue Sharing: FY 1998-99 to Present

Beginning in FY 1998-99, local revenue sharing underwent significant changes in both the appropriation guidelines and the distribution mechanism. These changes were contained in 1998 PA 532; discussion of these changes follows.

FY 1998-99 THROUGH FY 2002-03: REVENUE SHARING APPROPRIATIONS AND DISTRIBUTION FORMULAS

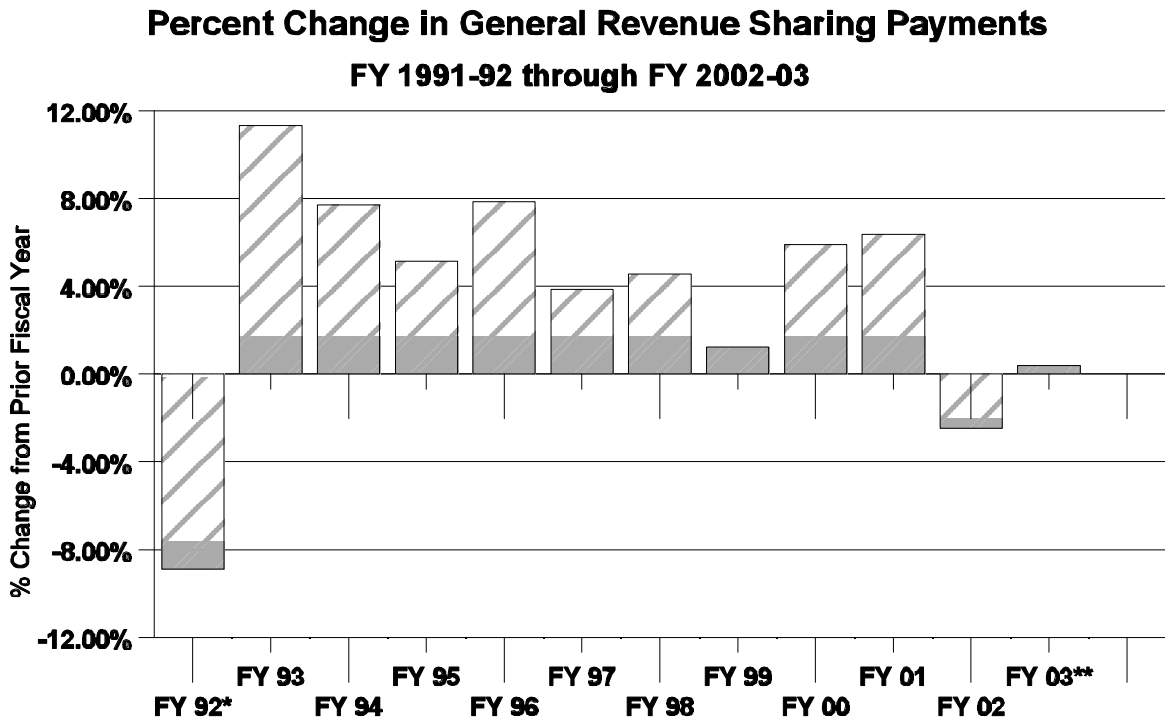
Revenue Sharing Sources/Appropriations

The sources of revenue sharing payments are a constitutional earmarking and a statutory earmarking of sales tax revenue, subject to the appropriations process. The constitutional earmark is 15% of sales tax revenue at a 4% rate, while the statutory earmark is 21.3% of sales tax revenue at a 4% rate.

During the budget process, however, the appropriation is set based on estimates for the next fiscal year. Thus, the actual total appropriation will differ from the sum of the final or actual constitutional earmark and the statutory earmark. As a result, the actual constitutional earmark will be paid first, and the difference between the total appropriation and the constitutional piece will be the statutory distribution.

Figure 1 depicts the percentage in general revenue sharing payments from FY 1991-92 through FY 2002-03. The average increase over this period has been about 3.6%.

Figure 1



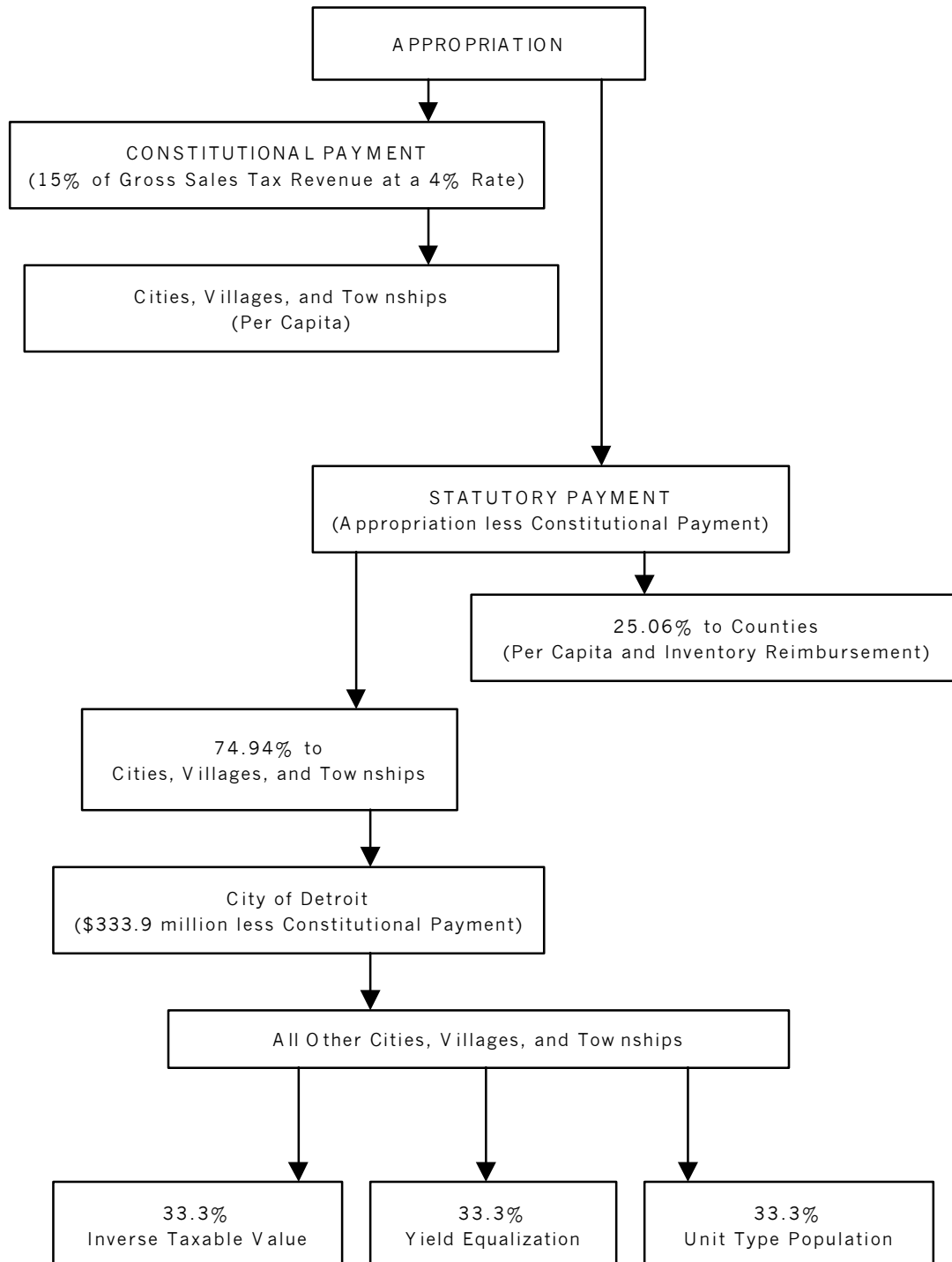
*Due to different fiscal year periods (state vs local), this was a state, but not a local, reduction. As a result of forward funding, \$112.2 was shifted into the state's next fiscal year, but was postponed for local units..

**Based on consensus estimates and enacted appropriation.

Revenue Sharing Distributions

Figure 2 is a flow chart of the distribution of revenue sharing appropriations when the new formulas contained in 1998 PA 532 are fully phased in. A more complete description follows.

Figure 2
Revenue Sharing Distribution when 1998 PA 532 is Fully Phased In (FY 2006-07)



Constitutional Distribution

PER CAPITA

The constitutional distribution is made to cities, villages, and townships on a per capita or a pure population basis.

Statutory Distribution

The statutory revenue sharing formulas, as specified in the State Revenue Sharing Act of 1971, as amended, sunset June 30, 2007.

COUNTIES

Counties receive 25.06% of the statutory distributions as specified in the appropriation. Approximately \$30.0 million is distributed under the inventory reimbursement formula described in the historical overview. The remaining amount, or over 85%, is distributed based entirely on population.

CITIES, VILLAGES, TOWNSHIPS (CVTs)

Cities, villages, and townships receive 74.94% of the statutory distributions. The City of Detroit is set, or frozen, at total revenue sharing payments of \$333.9 million until the sunset date (June 30, 2007). If sales tax revenue declines in a fiscal year, then the revenue sharing payment to the City of Detroit will decline by the same percent as the decline in sales tax revenue. The remainder of the statutory funding is phased in at a rate of 10% per fiscal year as indicated in Table 3. These formulas, used to distribute payments to all other CVTs, are described as follows.

Table 3

REVENUE SHARING STATUTORY FORMULA PHASE-IN SCHEDULE

	<u>FY 2000-01</u>	<u>FY 2001-02</u>	<u>FY 2002-03</u>
<u>Old Formulas</u>			
FY 1997-98 Pro-rata Distribution	70%	60%	50%
<u>New Formulas: Each Weighted 1/3</u>			
Inverse Taxable Value			
Yield Equalization			
Unit Type Population Group			
	30%	40%	50%

INVERSE TAXABLE VALUE

This formula is the statewide taxable value per capita divided by each CVT's taxable value per capita. Local units with a relatively high taxable value per person receive lower inverse taxable value payments, while local units with a relatively low taxable value per person receive higher inverse taxable value payments.

YIELD EQUALIZATION

This method equalizes the return for each mill levied, up to a maximum of 20 mills. Local units with comparatively low taxable value per person receive yield equalization payments, while local units with comparatively high taxable value per person receive no yield equalization payments. Typically, about one-half of all CVTs receive yield equalization payments.

UNIT TYPE — POPULATION GROUP

Under this method of distribution, local unit populations are weighted according to the schedule in Table 4. Townships with populations greater than or equal to 20,000 are weighted as cities. Townships that provide certain fire, police, water, and sewer services and have a population between 10,000 and 20,000 are also weighted as cities. The higher the weight factor, the higher the payment; the lower the weight factor, the lower the payment.

Table 4**UNIT TYPE POPULATION WEIGHT FACTOR**

<u>Population</u>	<u>Unit Type Factor</u>		
	<u>City</u>	<u>Village</u>	<u>Township</u>
0 - 5,000	2.50	1.50	1.00
5,001 - 10,000	3.00	1.80	1.20
10,001 - 20,000	3.60	2.16	1.44 / 3.60
20,001 - 40,000	4.32	2.16	4.32
40,001 - 80,000	5.18	2.16	5.18
80,001 - 160,000	6.22	2.16	6.22
160,001 - 320,000	7.46	2.16	7.46
320,001 - 640,000	8.96	2.16	8.96
Greater than 640,000	10.75	2.16	10.75

FY 1997-98 DISTRIBUTION

This formula is the pro-rata share for each CVT of the FY 1997-98 statutory distribution. This formula is being phased out at a rate of 10% per fiscal year.

EIGHT PERCENT CAP

The State Revenue Sharing Act of 1971, as amended, stipulates that the total revenue sharing payment to any city, village, or township (CVT) cannot increase by more than 8% of the total payment received in the preceding fiscal year. Local units that are subject to the 8% cap are eligible to participate in a process in which the funds in excess of the cap are redistributed to those CVTs that realized the smallest percentage gain to provide a floor, or minimum percentage change, in their total revenue sharing payments. The floor, which varies from year to year, is determined by the total appropriation and the amount of revenue sharing payments in excess of the 8% cap that is available for redistribution.

The 8% cap was applied to all CVTs in FY 1998-99 and in FY 1999-2000. However, beginning in FY 2000-01, if a CVT's population increases by at least 10% between the 1990 and the 2000 decennial census, the 8% cap does not apply. Examination of official 2000 Census population figures reveals that almost one-half of the local units meet or exceed 10% population growth.

MULTIPLE COUNTY UNITS

There are 23 cities and villages in Michigan that overlap county lines; these are referred to as split units in the Appendix. Even though each of these units exists in more than one county, the Department of Treasury treats each one as a joint entity. For example, the city of Holland straddles both Allegan and Ottawa counties. For revenue sharing purposes, however, Holland is treated as a single city.

ESTIMATED REVENUE SHARING PAYMENTS TO LOCAL UNITS FOR FY 2001-02 AND 2002-03

Local Unit Type	Name	FY 2001-02			FY 2002-03			Change From FY 2001-02	
		Final Payment	Change From FY 2000-01 Amount	Percent	Estimated Total Payment	Grants to Locals	Estimated Adjusted Payment	Amount	Percent
Alcona County		\$225,960	(\$13,237)	-5.5%	\$218,899	\$7,062	\$225,960	\$0	0.0%
Township	Alcona	80,584	(71)	-0.1%	83,524	0	83,524	2,940	3.6%
Township	Caledonia	88,431	54	0.1%	91,784	0	91,784	3,353	3.8%
Township	Curtis	110,769	(922)	-0.8%	114,083	0	114,083	3,314	3.0%
Township	Greenbush	110,929	178	0.2%	115,249	0	115,249	4,320	3.9%
Township	Gustin	51,842	(203)	-0.4%	53,624	0	53,624	1,782	3.4%
Township	Harrisville	103,562	496	0.5%	107,929	0	107,929	4,367	4.2%
Township	Hawes	69,775	329	0.5%	72,663	0	72,663	2,888	4.1%
Township	Haynes	52,580	175	0.3%	54,653	0	54,653	2,073	3.9%
Township	Mikado	83,378	185	0.2%	86,454	0	86,454	3,076	3.7%
Township	Millen	34,687	32	0.1%	36,027	0	36,027	1,340	3.9%
Township	Mitchell	28,097	108	0.4%	29,256	0	29,256	1,159	4.1%
City	Harrisville	51,739	(2,638)	-4.9%	52,278	0	52,278	539	1.0%
Village	Lincoln	32,497	(673)	-2.0%	33,125	0	33,125	628	1.9%
Alger County		193,448	(10,674)	-5.2%	187,769	5,679	193,448	0	0.0%
Township	Au Train	95,270	(865)	-0.9%	98,094	0	98,094	2,824	3.0%
Township	Burt	39,908	(2,665)	-6.3%	40,832	0	40,832	924	2.3%
Township	Grand Island	3,254	17	0.5%	3,384	0	3,384	130	4.0%
Township	Limestone	30,776	87	0.3%	32,038	0	32,038	1,262	4.1%
Township	Mathias	45,560	(106)	-0.2%	47,401	0	47,401	1,841	4.0%
Township	Munising	211,952	4,010	1.9%	221,516	0	221,516	9,564	4.5%
Township	Onota	25,190	(345)	-1.4%	25,836	0	25,836	646	2.6%
Township	Rock River	78,608	47	0.1%	81,133	0	81,133	2,525	3.2%
City	Munising	343,357	(21,853)	-6.0%	345,695	0	345,695	2,338	0.7%
Village	Chatham	24,106	(1,453)	-5.7%	24,332	0	24,332	226	0.9%
Allegan County		2,252,216	(119,433)	-5.0%	2,188,519	63,697	2,252,216	0	0.0%
Township	Allegan	329,999	(1,963)	-0.6%	342,133	0	342,133	12,134	3.7%
Township	Casco	250,139	(2,849)	-1.1%	256,852	0	256,852	6,713	2.7%
Township	Cheshire	195,497	(828)	-0.4%	202,206	0	202,206	6,709	3.4%
Township	Clyde	182,995	2,186	1.2%	189,035	0	189,035	6,040	3.3%
Township	Dorr	521,551	(125)	0.0%	539,582	0	539,582	18,031	3.5%
Township	Fillmore	221,507	(412)	-0.2%	228,629	0	228,629	7,122	3.2%
Township	Ganges	198,179	(1,506)	-0.8%	204,179	0	204,179	6,000	3.0%
Township	Gun Plain	436,708	(1,152)	-0.3%	451,949	0	451,949	15,241	3.5%

ESTIMATED REVENUE SHARING PAYMENTS TO LOCAL UNITS FOR FY 2001-02 AND 2002-03

Local Unit Type	Name	FY 2001-02			FY 2002-03			Change From FY 2001-02	
		Final Payment	Change From FY 2000-01 Amount	Percent	Estimated Total Payment	Grants to Locals	Estimated Adjusted Payment	Amount	Percent
Township	Heath	245,113	(1,720)	-0.7%	251,598	0	251,598	6,485	2.6%
Township	Hopkins	166,377	(1,308)	-0.8%	171,660	0	171,660	5,283	3.2%
Township	Laketown	438,700	(3,066)	-0.7%	451,911	0	451,911	13,211	3.0%
Township	Lee	422,696	250	0.1%	420,242	2,454	422,696	0	0.0%
Township	Leighton	289,988	(3,001)	-1.0%	298,166	0	298,166	8,178	2.8%
Township	Manlius	215,371	(3,851)	-1.8%	220,095	0	220,095	4,724	2.2%
Township	Martin	180,396	(2,833)	-1.5%	184,059	0	184,059	3,663	2.0%
Township	Monterey	173,160	(2,082)	-1.2%	178,281	0	178,281	5,121	3.0%
Township	Otsego	396,574	(2,199)	-0.6%	410,002	0	410,002	13,428	3.4%
Township	Overisel	262,708	(9,345)	-3.4%	263,802	0	263,802	1,094	0.4%
Township	Salem	318,167	(9,881)	-3.0%	323,212	0	323,212	5,045	1.6%
Township	Saugatuck	188,353	(2,179)	-1.1%	193,391	0	193,391	5,038	2.7%
Township	Trowbridge	203,186	10,511	5.5%	211,245	0	211,245	8,059	4.0%
Township	Valley	139,653	(441)	-0.3%	144,911	0	144,911	5,258	3.8%
Township	Watson	172,640	10,291	6.3%	179,348	0	179,348	6,708	3.9%
Township	Wayland	230,241	(267)	-0.1%	239,011	0	239,011	8,770	3.8%
City	Allegan	645,959	(31,844)	-4.7%	635,250	10,709	645,959	0	0.0%
City	Fennville	175,110	(5,542)	-3.1%	180,628	0	180,628	5,518	3.2%
City	Holland							<i>Split Unit: See Holland in Ottawa County</i>	
City	Otsego	476,295	(36,922)	-7.2%	472,339	3,956	476,295	0	0.0%
City	Plainwell	488,739	(33,330)	-6.4%	513,520	0	513,520	24,781	5.1%
City	Saugatuck	116,858	(5,254)	-4.3%	116,373	485	116,858	0	0.0%
City	South Haven							<i>Split Unit: See South Haven in Van Buren County</i>	
City	Wayland	476,910	(26,104)	-5.2%	474,876	2,034	476,910	0	0.0%
Village	Douglas	120,178	(4,406)	-3.5%	120,659	0	120,659	481	0.4%
Village	Hopkins	63,751	(332)	-0.5%	65,328	0	65,328	1,577	2.5%
Village	Martin	49,302	(1,234)	-2.4%	49,123	179	49,302	0	0.0%
Alpena County		742,391	(35,378)	-4.5%	723,536	18,855	742,391	0	0.0%
Township	Alpena	747,100	1,592	0.2%	775,273	0	775,273	28,173	3.8%
Township	Green	89,736	352	0.4%	93,490	0	93,490	3,754	4.2%
Township	Long Rapids	82,260	87	0.1%	85,327	0	85,327	3,067	3.7%
Township	Maple Ridge	134,926	850	0.6%	140,614	0	140,614	5,688	4.2%
Township	Ossineke	134,493	160	0.1%	139,841	0	139,841	5,348	4.0%
Township	Sanborn	169,576	805	0.5%	176,151	0	176,151	6,575	3.9%
Township	Wellington	22,361	6	0.0%	23,207	0	23,207	846	3.8%

ESTIMATED REVENUE SHARING PAYMENTS TO LOCAL UNITS FOR FY 2001-02 AND 2002-03

Local Unit Type	Name	FY 2001-02			FY 2002-03			Change From FY 2001-02	
		Final Payment	Change From FY 2000-01 Amount	Percent	Estimated Total Payment	Grants to Locals	Estimated Adjusted Payment	Amount	Percent
Township	Wilson	159,465	6,334	4.1%	166,076	0	166,076	6,611	4.1%
City	Alpena	1,676,294	(72,282)	-4.1%	1,683,973	0	1,683,973	7,679	0.5%
Antrim County		455,217	(26,114)	-5.4%	441,288	13,929	455,217	0	0.0%
Township	Banks	102,093	(349)	-0.3%	105,512	0	105,512	3,419	3.3%
Township	Central Lake	100,217	(1,025)	-1.0%	102,980	0	102,980	2,763	2.8%
Township	Chestonia	42,490	(223)	-0.5%	44,070	0	44,070	1,580	3.7%
Township	Custer	73,491	(160)	-0.2%	76,080	0	76,080	2,589	3.5%
Township	Echo	70,496	(31)	0.0%	73,096	0	73,096	2,600	3.7%
Township	Elk Rapids	76,943	(186)	-0.2%	79,621	0	79,621	2,678	3.5%
Township	Forest Home	103,233	(454)	-0.4%	106,664	0	106,664	3,431	3.3%
Township	Helena	68,967	(674)	-1.0%	70,922	0	70,922	1,955	2.8%
Township	Jordan	68,313	269	0.4%	70,903	0	70,903	2,590	3.8%
Township	Kearney	86,962	(1,161)	-1.3%	89,156	0	89,156	2,194	2.5%
Township	Mancelona	208,705	(172)	-0.1%	216,208	0	216,208	7,503	3.6%
Township	Milton	150,753	135	0.1%	156,531	0	156,531	5,778	3.8%
Township	Star	56,811	(83)	-0.1%	58,803	0	58,803	1,992	3.5%
Township	Torch Lake	82,893	224	0.3%	86,185	0	86,185	3,292	4.0%
Township	Warner	29,751	(35)	-0.1%	30,859	0	30,859	1,108	3.7%
Village	Bellaire	138,821	(5,708)	-3.9%	138,178	643	138,821	0	0.0%
Village	Central Lake	106,043	(1,743)	-1.6%	107,575	0	107,575	1,532	1.4%
Village	Elk Rapids	172,461	(6,320)	-3.5%	172,996	0	172,996	535	0.3%
Village	Ellsworth	55,720	(2,935)	-5.0%	56,825	0	56,825	1,105	2.0%
Village	Mancelona	181,697	2,007	1.1%	184,362	0	184,362	2,665	1.5%
Arenac County		342,588	(19,231)	-5.3%	332,259	10,330	342,588	0	0.0%
Township	Adams	43,365	207	0.5%	45,083	0	45,083	1,718	4.0%
Township	Arenac	77,352	3,858	5.2%	80,671	0	80,671	3,319	4.3%
Township	Au Gres	78,608	(274)	-0.3%	81,270	0	81,270	2,662	3.4%
Township	Clayton	90,144	(259)	-0.3%	93,219	0	93,219	3,075	3.4%
Township	Deep River	136,997	(303)	-0.2%	142,087	0	142,087	5,090	3.7%
Township	Lincoln	79,179	4,345	5.8%	82,268	0	82,268	3,089	3.9%
Township	Mason	69,304	(472)	-0.7%	73,186	0	73,186	3,882	5.6%
Township	Moffatt	89,914	(586)	-0.6%	92,631	0	92,631	2,717	3.0%
Township	Sims	80,576	56	0.1%	83,738	0	83,738	3,162	3.9%
Township	Standish	159,912	3,581	2.3%	166,567	0	166,567	6,655	4.2%

ESTIMATED REVENUE SHARING PAYMENTS TO LOCAL UNITS FOR FY 2001-02 AND 2002-03

Local Unit Type	Name	FY 2001-02			FY 2002-03			Change From FY 2001-02	
		Final Payment	Change From FY 2000-01 Amount	Percent	Estimated Total Payment	Grants to Locals	Estimated Adjusted Payment	Amount	Percent
Township	Turner	31,389	149	0.5%	32,679	0	32,679	1,290	4.1%
Township	Whitney	77,142	43	0.1%	80,037	0	80,037	2,895	3.8%
City	Au Gres	108,782	(4,087)	-3.6%	109,123	0	109,123	341	0.3%
City	Omer	45,235	(1,377)	-3.0%	45,868	0	45,868	633	1.4%
City	Standish	245,288	(11,509)	-4.5%	246,790	0	246,790	1,502	0.6%
Village	Sterling	51,038	2,463	5.1%	53,014	0	53,014	1,976	3.9%
Village	Turner	18,309	(16)	-0.1%	18,819	0	18,819	510	2.8%
Village	Twining	24,961	(123)	-0.5%	25,185	0	25,185	224	0.9%
Baraga County		179,884	(9,554)	-5.0%	174,775	5,109	179,884	0	0.0%
Township	Arvon	36,978	(162)	-0.4%	38,191	0	38,191	1,213	3.3%
Township	Baraga	165,689	(1,559)	-0.9%	171,759	0	171,759	6,070	3.7%
Township	Covington	46,576	(3,709)	-7.4%	48,349	0	48,349	1,773	3.8%
Township	L'Anse	139,937	(62)	0.0%	144,849	0	144,849	4,912	3.5%
Township	Spurr	20,157	(1,158)	-5.4%	20,442	0	20,442	285	1.4%
Village	Baraga	165,511	11,535	7.5%	169,042	0	169,042	3,531	2.1%
Village	L'Anse	267,096	(2,715)	-1.0%	268,644	0	268,644	1,548	0.6%
Barry County		1,145,090	(64,155)	-5.3%	1,110,918	34,171	1,145,090	0	0.0%
Township	Assyria	148,266	4,245	2.9%	154,418	0	154,418	6,152	4.2%
Township	Baltimore	143,573	7,452	5.5%	149,012	0	149,012	5,439	3.8%
Township	Barry	298,876	7,549	2.6%	308,352	0	308,352	9,476	3.2%
Township	Carlton	185,234	601	0.3%	191,590	0	191,590	6,356	3.4%
Township	Castleton	148,897	(354)	-0.2%	154,470	0	154,470	5,573	3.7%
Township	Hastings	230,297	4,941	2.2%	240,269	0	240,269	9,972	4.3%
Township	Hope	262,213	9,888	3.9%	271,496	0	271,496	9,283	3.5%
Township	Irving	174,117	426	0.2%	180,207	0	180,207	6,090	3.5%
Township	Johnstown	243,155	107	0.0%	251,999	0	251,999	8,844	3.6%
Township	Maple Grove	111,987	(151)	-0.1%	115,998	0	115,998	4,011	3.6%
Township	Orangeville	257,063	(322)	-0.1%	266,511	0	266,511	9,448	3.7%
Township	Prairieville	254,197	(12,242)	-4.6%	262,299	0	262,299	8,102	3.2%
Township	Rutland	284,257	(125)	0.0%	293,915	0	293,915	9,658	3.4%
Township	Thornapple	295,721	(430)	-0.1%	307,097	0	307,097	11,376	3.8%
Township	Woodland	127,912	(401)	-0.3%	132,388	0	132,388	4,476	3.5%
Township	Yankee Springs	307,738	1,366	0.4%	320,714	0	320,714	12,976	4.2%
City	Hastings	917,541	(40,536)	-4.2%	913,550	3,991	917,541	0	0.0%

ESTIMATED REVENUE SHARING PAYMENTS TO LOCAL UNITS FOR FY 2001-02 AND 2002-03

Local Unit Type	Name	FY 2001-02			FY 2002-03			Change From FY 2001-02	
		Final Payment	Change From FY 2000-01 Amount	Percent	Estimated Total Payment	Grants to Locals	Estimated Adjusted Payment	Amount	Percent
Village	Freeport	46,742	(687)	-1.4%	47,498	0	47,498	756	1.6%
Village	Middleville	281,642	(12,157)	-4.1%	288,490	0	288,490	6,848	2.4%
Village	Nashville	223,830	14,554	7.0%	225,882	0	225,882	2,052	0.9%
Village	Woodland	56,706	4,200	8.0%	60,164	0	60,164	3,458	6.1%
Bay County		2,637,978	(124,486)	-4.5%	2,571,690	66,288	2,637,978	0	0.0%
Township	Bangor	1,383,400	(16,946)	-1.2%	1,422,606	0	1,422,606	39,206	2.8%
Township	Beaver	240,634	(1,234)	-0.5%	248,477	0	248,477	7,843	3.3%
Township	Frankenlust	191,042	(209)	-0.1%	198,041	0	198,041	6,999	3.7%
Township	Fraser	266,233	(2,671)	-1.0%	277,592	0	277,592	11,359	4.3%
Township	Garfield	154,140	603	0.4%	158,957	0	158,957	4,817	3.1%
Township	Gibson	102,454	481	0.5%	106,541	0	106,541	4,087	4.0%
Township	Hampton	837,587	(11,738)	-1.4%	857,219	0	857,219	19,632	2.3%
Township	Kawkawlin	396,373	4,228	1.1%	412,236	0	412,236	15,863	4.0%
Township	Merritt	122,773	(806)	-0.7%	126,894	0	126,894	4,121	3.4%
Township	Monitor	775,308	624	0.1%	804,931	0	804,931	29,623	3.8%
Township	Mt Forest	118,307	1,007	0.9%	122,437	0	122,437	4,130	3.5%
Township	Pinconning	205,073	833	0.4%	213,819	0	213,819	8,746	4.3%
Township	Portsmouth	300,267	(3,519)	-1.2%	310,718	0	310,718	10,451	3.5%
Township	Williams	364,641	(3,034)	-0.8%	375,156	0	375,156	10,515	2.9%
City	Auburn	224,510	2,017	0.9%	227,459	0	227,459	2,949	1.3%
City	Bay City	6,144,086	(284,034)	-4.4%	6,136,171	7,915	6,144,086	0	0.0%
City	Essexville	463,812	(7,604)	-1.6%	470,019	0	470,019	6,207	1.3%
City	Midland						<i>Split Unit: See Midland in Midland County</i>		
City	Pinconning	176,291	(3,081)	-1.7%	178,545	0	178,545	2,254	1.3%
Benzie County		320,807	(18,076)	-5.3%	311,168	9,639	320,807	0	0.0%
Township	Almira	191,941	(322)	-0.2%	199,007	0	199,007	7,066	3.7%
Township	Benzonia	144,058	83	0.1%	149,522	0	149,522	5,464	3.8%
Township	Blaine	36,757	(41)	-0.1%	38,102	0	38,102	1,345	3.7%
Township	Colfax	32,985	(56)	-0.2%	34,290	0	34,290	1,305	4.0%
Township	Crystal Lake	69,256	151	0.2%	71,986	0	71,986	2,730	3.9%
Township	Gilmore	28,818	56	0.2%	29,910	0	29,910	1,092	3.8%
Township	Homestead	136,228	641	0.5%	140,865	0	140,865	4,637	3.4%
Township	Inland	121,546	(346)	-0.3%	125,979	0	125,979	4,433	3.6%
Township	Joyfield	59,421	212	0.4%	61,952	0	61,952	2,531	4.3%

ESTIMATED REVENUE SHARING PAYMENTS TO LOCAL UNITS FOR FY 2001-02 AND 2002-03

Local Unit Type	Name	FY 2001-02			FY 2002-03			Change From FY 2001-02	
		Final Payment	Change From FY 2000-01 Amount	Percent	Estimated Total Payment	Grants to Locals	Estimated Adjusted Payment	Amount	Percent
Township	Lake	44,672	190	0.4%	46,511	0	46,511	1,839	4.1%
Township	Platte	25,368	(15)	-0.1%	26,427	0	26,427	1,059	4.2%
Township	Weldon	15,838	9	0.1%	16,442	0	16,442	604	3.8%
City	Frankfort	171,648	(13,219)	-7.2%	171,055	593	171,648	0	0.0%
Village	Benzonia	55,819	(2,296)	-4.0%	52,167	0	52,167	(3,652)	-6.5%
Village	Beulah	35,858	(6,552)	-15.4%	38,429	0	38,429	2,571	7.2%
Village	Elberta	62,357	(2,483)	-3.8%	62,916	0	62,916	559	0.9%
Village	Honor	29,145	(978)	-3.2%	29,223	0	29,223	78	0.3%
Village	Lake Ann	20,173	137	0.7%	21,099	0	21,099	926	4.6%
Village	Thompsonville	49,771	3,687	8.0%	53,753	0	53,753	3,982	8.0%
Berrien County		3,650,113	(183,550)	-4.8%	3,552,220	97,893	3,650,113	0	0.0%
Township	Bainbridge	240,129	12,098	5.3%	250,049	0	250,049	9,920	4.1%
Township	Baroda	176,808	(6,099)	-3.3%	180,485	0	180,485	3,677	2.1%
Township	Benton	1,797,409	(39,561)	-2.2%	1,826,205	0	1,826,205	28,796	1.6%
Township	Berrien	360,611	(67)	0.0%	373,626	0	373,626	13,015	3.6%
Township	Bertrand	183,774	(274)	-0.1%	189,109	0	189,109	5,335	2.9%
Township	Buchanan	277,315	(1,423)	-0.5%	291,368	0	291,368	14,053	5.1%
Township	Chikaming	274,490	(2,146)	-0.8%	284,023	0	284,023	9,533	3.5%
Township	Coloma	467,273	(6,505)	-1.4%	479,356	0	479,356	12,083	2.6%
Township	Galien	77,994	(70)	-0.1%	80,882	0	80,882	2,888	3.7%
Township	Hagar	298,636	1,827	0.6%	309,963	0	309,963	11,327	3.8%
Township	Lake	239,433	(1,454)	-0.6%	246,900	0	246,900	7,467	3.1%
Township	Lincoln	1,064,732	(5,634)	-0.5%	1,099,801	0	1,099,801	35,069	3.3%
Township	New Buffalo	147,424	(3,638)	-2.4%	153,094	0	153,094	5,670	3.8%
Township	Niles	1,208,032	(3,567)	-0.3%	1,223,275	0	1,223,275	15,243	1.3%
Township	Oronoko	700,517	(6,678)	-0.9%	723,190	0	723,190	22,673	3.2%
Township	Pipestone	180,984	7,897	4.6%	187,990	0	187,990	7,006	3.9%
Township	Royalton	291,783	386	0.1%	303,008	0	303,008	11,225	3.8%
Township	St Joseph	751,142	(7,282)	-1.0%	772,667	0	772,667	21,525	2.9%
Township	Sodus	186,271	(840)	-0.4%	191,242	0	191,242	4,971	2.7%
Township	Three Oaks	83,774	(2,201)	-2.6%	86,841	0	86,841	3,067	3.7%
Township	Watervliet	282,516	(2,046)	-0.7%	291,632	0	291,632	9,116	3.2%
Township	Weesaw	165,113	(736)	-0.4%	171,027	0	171,027	5,914	3.6%
City	Benton Harbor	2,560,135	(96,980)	-3.7%	2,572,833	0	2,572,833	12,698	0.5%
City	Bridgman	263,961	(10,882)	-4.0%	263,986	0	263,986	25	0.0%

ESTIMATED REVENUE SHARING PAYMENTS TO LOCAL UNITS FOR FY 2001-02 AND 2002-03

Local Unit		FY 2001-02			FY 2002-03			Change From FY 2001-02	
		Final Payment	Change From FY 2000-01 Amount	Percent	Estimated Total Payment	Grants to Locals	Estimated Adjusted Payment	Amount	Percent
Type	Name								
City	Buchanan	799,506	(40,018)	-4.8%	788,044	11,462	799,506	0	0.0%
City	Coloma	217,968	(10,494)	-4.6%	219,443	0	219,443	1,475	0.7%
City	New Buffalo	221,975	(18,165)	-7.6%	223,332	0	223,332	1,357	0.6%
City	Niles	1,793,000	(61,196)	-3.3%	1,798,749	0	1,798,749	5,749	0.3%
City	St Joseph	1,242,324	(186,537)	-13.1%	1,213,573	28,751	1,242,324	0	0.0%
City	Watervliet	288,130	(295)	-0.1%	288,592	0	288,592	462	0.2%
Village	Baroda	94,018	(1,251)	-1.3%	97,943	0	97,943	3,925	4.2%
Village	Berrien Springs	210,275	(5,633)	-2.6%	216,507	0	216,507	6,232	3.0%
Village	Eau Claire	94,587	(2,477)	-2.6%	93,549	1,038	94,587	0	0.0%
Village	Galien	64,418	781	1.2%	65,792	0	65,792	1,374	2.1%
Village	Grand Beach	17,492	(196)	-1.1%	17,964	0	17,964	472	2.7%
Village	Michiana	16,784	(314)	-1.8%	17,125	0	17,125	341	2.0%
Village	Shoreham	64,208	187	0.3%	66,719	0	66,719	2,511	3.9%
Village	Stevensville	116,841	(2,866)	-2.4%	118,955	0	118,955	2,114	1.8%
Village	Three Oaks	228,108	(1,124)	-0.5%	230,766	0	230,766	2,658	1.2%
Branch County		989,376	(50,607)	-4.9%	961,732	27,644	989,376	0	0.0%
Township	Algansee	156,324	499	0.3%	162,754	0	162,754	6,430	4.1%
Township	Batavia	121,703	676	0.6%	126,821	0	126,821	5,118	4.2%
Township	Bethel	111,156	615	0.6%	115,833	0	115,833	4,677	4.2%
Township	Bronson	104,047	377	0.4%	108,747	0	108,747	4,700	4.5%
Township	Butler	105,417	52	0.0%	109,949	0	109,949	4,532	4.3%
Township	California	71,987	465	0.7%	75,137	0	75,137	3,150	4.4%
Township	Coldwater	364,301	1,724	0.5%	385,116	0	385,116	20,815	5.7%
Township	Gilead	57,301	2,468	4.5%	59,792	0	59,792	2,491	4.3%
Township	Girard	145,135	1,619	1.1%	146,369	0	146,369	1,234	0.9%
Township	Kinderhook	117,495	435	0.4%	122,421	0	122,421	4,926	4.2%
Township	Matteson	99,821	1,037	1.1%	103,801	0	103,801	3,980	4.0%
Township	Noble	39,483	1,365	3.6%	41,196	0	41,196	1,713	4.3%
Township	Ovid	178,118	566	0.3%	185,458	0	185,458	7,340	4.1%
Township	Quincy	203,309	448	0.2%	211,451	0	211,451	8,142	4.0%
Township	Sherwood	153,695	753	0.5%	160,248	0	160,248	6,553	4.3%
Township	Union	103,456	(150)	-0.1%	107,327	0	107,327	3,871	3.7%
City	Bronson	374,491	(466)	-0.1%	376,748	0	376,748	2,257	0.6%
City	Coldwater	1,200,347	(64,876)	-5.1%	1,182,252	18,095	1,200,347	0	0.0%
Village	Quincy	257,240	4,741	1.9%	260,402	0	260,402	3,162	1.2%

ESTIMATED REVENUE SHARING PAYMENTS TO LOCAL UNITS FOR FY 2001-02 AND 2002-03

Local Unit Type	Name	FY 2001-02			FY 2002-03			Change From FY 2001-02	
		Final Payment	Change From FY 2000-01 Amount	Percent	Estimated Total Payment	Grants to Locals	Estimated Adjusted Payment	Amount	Percent
Village	Sherwood	34,399	2,548	8.0%	37,151	0	37,151	2,752	8.0%
Village	Union City	241,637	17,203	7.7%	246,618	0	246,618	4,981	2.1%
Calhoun County		3,063,197	(155,696)	-4.8%	2,979,693	83,504	3,063,197	0	0.0%
Township	Albion	102,957	(4,590)	-4.3%	105,356	0	105,356	2,399	2.3%
Township	Athens	116,144	(1,879)	-1.6%	119,190	0	119,190	3,046	2.6%
Township	Bedford	842,621	(4,949)	-0.6%	871,975	0	871,975	29,354	3.5%
Township	Burlington	114,280	449	0.4%	118,868	0	118,868	4,588	4.0%
Township	Clarence	153,397	619	0.4%	159,813	0	159,813	6,416	4.2%
Township	Clarendon	87,077	2,046	2.4%	90,499	0	90,499	3,422	3.9%
Township	Convis	127,187	529	0.4%	132,731	0	132,731	5,544	4.4%
Township	Eckford	100,041	(107)	-0.1%	103,480	0	103,480	3,439	3.4%
Township	Emmett	1,017,624	(7,171)	-0.7%	1,058,600	0	1,058,600	40,976	4.0%
Township	Fredonia	142,335	(1,345)	-0.9%	144,365	0	144,365	2,030	1.4%
Township	Homer	85,794	252	0.3%	89,282	0	89,282	3,488	4.1%
Township	Lee	96,202	491	0.5%	100,391	0	100,391	4,189	4.4%
Township	Leroy	250,408	3,454	1.4%	259,394	0	259,394	8,986	3.6%
Township	Marengo	170,780	46	0.0%	174,632	0	174,632	3,852	2.3%
Township	Marshall	226,194	(231)	-0.1%	234,182	0	234,182	7,988	3.5%
Township	Newton	194,096	(191)	-0.1%	200,266	0	200,266	6,170	3.2%
Township	Pennfield	795,352	10,984	1.4%	817,704	0	817,704	22,352	2.8%
Township	Sheridan	199,297	5,951	3.1%	197,242	2,055	199,297	0	0.0%
Township	Tekonsha	76,199	202	0.3%	79,308	0	79,308	3,109	4.1%
City	Albion	1,496,850	(52,297)	-3.4%	1,502,251	0	1,502,251	5,401	0.4%
City	Battle Creek	7,589,841	(375,084)	-4.7%	7,494,391	95,450	7,589,841	0	0.0%
City	Marshall	904,439	(44,876)	-4.7%	896,615	7,824	904,439	0	0.0%
City	Springfield	956,351	(61,291)	-6.0%	945,479	10,872	956,351	0	0.0%
Village	Athens	131,001	(2,120)	-1.6%	133,368	0	133,368	2,367	1.8%
Village	Burlington	49,792	352	0.7%	51,470	0	51,470	1,678	3.4%
Village	Homer	255,234	18,906	8.0%	260,331	0	260,331	5,097	2.0%
Village	Tekonsha	79,435	(1,809)	-2.2%	81,442	0	81,442	2,007	2.5%
Village	Union City								
<i>Split Unit: See Union City in Branch County</i>									
Cass County		1,054,837	(57,731)	-5.2%	1,024,048	30,789	1,054,837	0	0.0%
Township	Calvin	158,109	115	0.1%	164,303	0	164,303	6,194	3.9%
Township	Howard	502,321	436	0.1%	521,204	0	521,204	18,883	3.8%

ESTIMATED REVENUE SHARING PAYMENTS TO LOCAL UNITS FOR FY 2001-02 AND 2002-03

Local Unit Type	Name	FY 2001-02			FY 2002-03			Change From FY 2001-02	
		Final Payment	Change From FY 2000-01 Amount	Percent	Estimated Total Payment	Grants to Locals	Estimated Adjusted Payment	Amount	Percent
Township	Jefferson	186,463	(250)	-0.1%	190,989	0	190,989	4,526	2.4%
Township	Lagrange	122,146	(231)	-0.2%	126,407	0	126,407	4,261	3.5%
Township	Marcellus	120,847	(352)	-0.3%	125,018	0	125,018	4,171	3.5%
Township	Mason	202,014	(392)	-0.2%	209,500	0	209,500	7,486	3.7%
Township	Milton	204,404	(1,448)	-0.7%	209,661	0	209,661	5,257	2.6%
Township	Newberg	137,813	(415)	-0.3%	139,998	0	139,998	2,185	1.6%
Township	Ontwa	380,855	(3,171)	-0.8%	392,572	0	392,572	11,717	3.1%
Township	Penn	110,478	(2,556)	-2.3%	114,257	0	114,257	3,779	3.4%
Township	Pokagon	174,610	68	0.0%	181,179	0	181,179	6,569	3.8%
Township	Porter	287,178	70	0.0%	298,089	0	298,089	10,911	3.8%
Township	Silver Creek	255,429	1,134	0.4%	266,023	0	266,023	10,594	4.1%
Township	Volinia	92,579	(198)	-0.2%	95,840	0	95,840	3,261	3.5%
Township	Wayne	222,546	1,219	0.6%	232,089	0	232,089	9,543	4.3%
City	Dowagiac	931,629	(35,037)	-3.6%	926,948	4,681	931,629	0	0.0%
City	Niles								
									<i>Split Unit: See Niles in Berrien County</i>
Village	Cassopolis	248,773	(7,853)	-3.1%	251,709	0	251,709	2,936	1.2%
Village	Edwardsburg	139,343	4,766	3.5%	138,016	1,327	139,343	0	0.0%
Village	Marcellus	165,012	8,114	5.2%	166,796	0	166,796	1,784	1.1%
Village	Vandalia	59,780	1,071	1.8%	59,802	0	59,802	22	0.0%
Charlevoix County		541,231	(29,494)	-5.2%	525,499	15,732	541,231	0	0.0%
Township	Bay	77,526	128	0.2%	80,506	0	80,506	2,980	3.8%
Township	Boyne Valley	68,807	(1,089)	-1.6%	70,386	0	70,386	1,579	2.3%
Township	Chandler	16,906	26	0.2%	17,560	0	17,560	654	3.9%
Township	Charlevoix	130,380	(786)	-0.6%	134,470	0	134,470	4,090	3.1%
Township	Evangeline	57,251	(32)	-0.1%	59,367	0	59,367	2,116	3.7%
Township	Eveline	116,916	(481)	-0.4%	120,896	0	120,896	3,980	3.4%
Township	Hayes	138,140	150	0.1%	143,405	0	143,405	5,265	3.8%
Township	Hudson	49,439	(206)	-0.4%	51,095	0	51,095	1,656	3.4%
Township	Marion	113,502	(63)	-0.1%	117,503	0	117,503	4,001	3.5%
Township	Melrose	104,627	(251)	-0.2%	108,359	0	108,359	3,732	3.6%
Township	Norwood	51,700	199	0.4%	53,855	0	53,855	2,155	4.2%
Township	Peaine	18,986	(193)	-1.0%	19,519	0	19,519	533	2.8%
Township	St James	28,223	(840)	-2.9%	28,504	0	28,504	281	1.0%
Township	South Arm	138,116	176	0.1%	143,444	0	143,444	5,328	3.9%
Township	Wilson	164,767	(634)	-0.4%	170,248	0	170,248	5,481	3.3%

ESTIMATED REVENUE SHARING PAYMENTS TO LOCAL UNITS FOR FY 2001-02 AND 2002-03

Local Unit		FY 2001-02			FY 2002-03			Change From FY 2001-02	
		Final Payment	Amount	Percent	Estimated Total Payment	Grants to Locals	Estimated Adjusted Payment	Amount	Percent
Type	Name								
City	Boyne City	433,027	(38,849)	-8.2%	427,480	5,547	433,027	0	0.0%
City	Charlevoix	314,231	(27,626)	-8.1%	314,491	0	314,491	260	0.1%
City	East Jordan	330,457	(19,680)	-5.6%	329,167	1,290	330,457	0	0.0%
Village	Boyne Falls	43,478	(684)	-1.5%	44,191	0	44,191	713	1.6%

ESTIMATED REVENUE SHARING PAYMENTS TO LOCAL UNITS FOR FY 2001-02 AND 2002-03

Local Unit		FY 2001-02			FY 2002-03			Change From FY 2001-02	
		Final Payment	Change From FY 2000-01 Amount	Percent	Estimated Total Payment	Grants to Locals	Estimated Adjusted Payment	Amount	Percent
Type	Name								
Cheboygan County		529,198	(29,881)	-5.3%	513,230	15,968	529,198	0	0.0%
Township	Aloha	78,321	84	0.1%	81,325	0	81,325	3,004	3.8%
Township	Beaugrand	90,404	(346)	-0.4%	93,686	0	93,686	3,282	3.6%
Township	Benton	230,665	561	0.2%	239,723	0	239,723	9,058	3.9%
Township	Burt	46,573	148	0.3%	48,439	0	48,439	1,866	4.0%
Township	Ellis	39,262	(37)	-0.1%	40,689	0	40,689	1,427	3.6%
Township	Forest	84,853	623	0.7%	88,714	0	88,714	3,861	4.6%
Township	Grant	71,771	33	0.0%	74,435	0	74,435	2,664	3.7%
Township	Hebron	22,853	(15)	-0.1%	23,692	0	23,692	839	3.7%
Township	Inverness	176,237	(325)	-0.2%	182,456	0	182,456	6,219	3.5%
Township	Koehler	84,784	513	0.6%	88,416	0	88,416	3,632	4.3%
Township	Mackinaw	18,377	26	0.1%	19,083	0	19,083	706	3.8%
Township	Mentor	59,211	219	0.4%	61,582	0	61,582	2,371	4.0%
Township	Mullett	96,044	(95)	-0.1%	99,552	0	99,552	3,508	3.7%
Township	Munro	49,440	162	0.3%	51,419	0	51,419	1,979	4.0%
Township	Nunda	47,682	(60)	-0.1%	49,395	0	49,395	1,713	3.6%
Township	Tuscarora	242,337	(1,810)	-0.7%	249,868	0	249,868	7,531	3.1%
Township	Walker	22,902	91	0.4%	23,870	0	23,870	968	4.2%
Township	Waverly	34,938	46	0.1%	36,256	0	36,256	1,318	3.8%
Township	Wilmot	60,111	782	1.3%	62,554	0	62,554	2,443	4.1%
City	Cheboygan	754,294	(15,902)	-2.1%	754,911	0	754,911	617	0.1%
Village	Mackinaw City	98,701	(12,020)	-10.9%	97,621	1,080	98,701	0	0.0%
Village	Wolverine	43,982	(395)	-0.9%	45,017	0	45,017	1,035	2.4%
Chippewa County		718,389	(41,233)	-5.4%	694,955	23,434	718,389	0	0.0%
Township	Bay Mills	90,711	183	0.2%	94,480	0	94,480	3,769	4.2%
Township	Bruce	152,572	230	0.2%	158,808	0	158,808	6,236	4.1%
Township	Chippewa	18,737	(1,645)	-8.1%	19,500	0	19,500	763	4.1%
Township	Dafter	103,714	287	0.3%	107,963	0	107,963	4,249	4.1%
Township	De Tour	37,023	(314)	-0.8%	38,128	0	38,128	1,105	3.0%
Township	Drummond	77,208	(619)	-0.8%	79,526	0	79,526	2,318	3.0%
Township	Hulbert	18,536	(472)	-2.5%	18,923	0	18,923	387	2.1%
Township	Kinross	597,227	10,169	1.7%	604,353	0	604,353	7,126	1.2%
Township	Pickford	136,853	(793)	-0.6%	141,363	0	141,363	4,510	3.3%
Township	Raber	52,964	(320)	-0.6%	54,673	0	54,673	1,709	3.2%
Township	Rudyard	117,261	1,202	1.0%	121,584	0	121,584	4,323	3.7%

ESTIMATED REVENUE SHARING PAYMENTS TO LOCAL UNITS FOR FY 2001-02 AND 2002-03

Local Unit		FY 2001-02			FY 2002-03			Change From FY 2001-02	
		Final Payment	Change From FY 2000-01 Amount	Percent	Estimated Total Payment	Grants to Locals	Estimated Adjusted Payment	Amount	Percent
Type	Name								
Township	Soo	200,504	480	0.2%	208,629	0	208,629	8,125	4.1%
Township	Sugar Island	54,823	(539)	-1.0%	56,512	0	56,512	1,689	3.1%
Township	Superior	108,339	(2,331)	-2.1%	112,096	0	112,096	3,757	3.5%
Township	Trout Lake	34,801	165	0.5%	36,180	0	36,180	1,379	4.0%
Township	Whitefish	43,521	(57)	-0.1%	45,099	0	45,099	1,578	3.6%
City	Sault Ste Marie	2,068,810	(52,286)	-2.5%	2,064,826	0	2,064,826	(3,984)	-0.2%
Village	De Tour	40,391	(1,189)	-2.9%	40,903	0	40,903	512	1.3%
Clare County		657,609	(35,272)	-5.1%	638,726	18,883	657,609	0	0.0%
Township	Arthur	53,740	(105)	-0.2%	55,678	0	55,678	1,938	3.6%
Township	Franklin	63,243	455	0.7%	65,681	0	65,681	2,438	3.9%
Township	Freeman	86,030	(275)	-0.3%	89,026	0	89,026	2,996	3.5%
Township	Frost	86,116	196	0.2%	89,771	0	89,771	3,655	4.2%
Township	Garfield	148,172	304	0.2%	153,981	0	153,981	5,809	3.9%
Township	Grant	232,621	270	0.1%	241,800	0	241,800	9,179	3.9%
Township	Greenwood	81,140	131	0.2%	84,390	0	84,390	3,250	4.0%
Township	Hamilton	152,827	554	0.4%	159,069	0	159,069	6,242	4.1%
Township	Hatton	70,791	536	0.8%	73,758	0	73,758	2,967	4.2%
Township	Hayes	409,768	1,834	0.5%	426,588	0	426,588	16,820	4.1%
Township	Lincoln	137,313	(885)	-0.6%	141,681	0	141,681	4,368	3.2%
Township	Redding	40,452	221	0.5%	42,152	0	42,152	1,700	4.2%
Township	Sheridan	123,813	1,507	1.2%	128,928	0	128,928	5,115	4.1%
Township	Summerfield	37,289	(392)	-1.0%	38,318	0	38,318	1,029	2.8%
Township	Surrey	219,657	(2,022)	-0.9%	226,601	0	226,601	6,944	3.2%
Township	Winterfield	38,045	(288)	-0.8%	39,211	0	39,211	1,166	3.1%
City	Clare	423,722	(10,742)	-2.5%	420,608	3,114	423,722	0	0.0%
City	Harrison	218,069	(11,405)	-5.0%	228,918	0	228,918	10,849	5.0%
Village	Farwell	98,209	(702)	-0.7%	99,576	0	99,576	1,367	1.4%

ESTIMATED REVENUE SHARING PAYMENTS TO LOCAL UNITS FOR FY 2001-02 AND 2002-03

Local Unit		FY 2001-02			FY 2002-03			Change From FY 2001-02	
		Final Payment	Change From FY 2000-01 Amount	Percent	Estimated Total Payment	Grants to Locals	Estimated Adjusted Payment	Amount	Percent
Type	Name								
Clinton County		1,271,274	(73,123)	-5.4%	1,232,434	38,840	1,271,274	0	0.0%
Township	Bath	670,082	(15,384)	-2.2%	680,189	0	680,189	10,107	1.5%
Township	Bengal	91,786	(276)	-0.3%	94,663	0	94,663	2,877	3.1%
Township	Bingham	214,295	(1,845)	-0.9%	200,668	0	200,668	(13,627)	-6.4%
Township	Dallas	91,725	(1,182)	-1.3%	94,857	0	94,857	3,132	3.4%
Township	Dewitt	1,077,441	(16,068)	-1.5%	1,104,395	0	1,104,395	26,954	2.5%
Township	Duplain	95,055	114	0.1%	98,978	0	98,978	3,923	4.1%
Township	Eagle	168,131	716	0.4%	174,438	0	174,438	6,307	3.8%
Township	Essex	86,659	308	0.4%	90,276	0	90,276	3,617	4.2%
Township	Greenbush	161,244	617	0.4%	168,193	0	168,193	6,949	4.3%
Township	Lebanon	51,340	103	0.2%	53,350	0	53,350	2,010	3.9%
Township	Olive	175,520	6,113	3.6%	182,700	0	182,700	7,180	4.1%
Township	Ovid	150,784	124	0.1%	156,438	0	156,438	5,654	3.8%
Township	Riley	135,935	(259)	-0.2%	140,899	0	140,899	4,964	3.7%
Township	Victor	248,003	666	0.3%	258,091	0	258,091	10,088	4.1%
Township	Watertown	345,407	(4,551)	-1.3%	354,020	0	354,020	8,613	2.5%
Township	Westphalia	106,801	(388)	-0.4%	110,499	0	110,499	3,698	3.5%
City	Dewitt	462,925	(9,152)	-1.9%	473,125	0	473,125	10,200	2.2%
City	East Lansing								
City	St Johns	854,869	(21,796)	-2.5%	895,352	0	895,352	40,483	4.7%
Village	Eagle	11,741	559	5.0%	12,361	0	12,361	620	5.3%
Village	Elsie	132,459	(6,228)	-4.5%	136,412	0	136,412	3,953	3.0%
Village	Fowler	109,552	(2,143)	-1.9%	112,283	0	112,283	2,731	2.5%
Village	Hubbardston								
Village	Maple Rapids	79,212	(490)	-0.6%	80,668	0	80,668	1,456	1.8%
Village	Ovid	178,942	1,170	0.7%	182,290	0	182,290	3,348	1.9%
Village	Westphalia	81,642	(1,075)	-1.3%	83,860	0	83,860	2,218	2.7%
Crawford County		300,580	(15,830)	-5.0%	292,763	7,816	300,580	0	0.0%
Township	Beaver Creek	107,819	849	0.8%	112,414	0	112,414	4,595	4.3%
Township	Frederic	107,532	(69)	-0.1%	112,643	0	112,643	5,111	4.8%
Township	Grayling	479,570	2,656	0.6%	500,877	0	500,877	21,307	4.4%
Township	Lovells	42,167	91	0.2%	43,825	0	43,825	1,658	3.9%
Township	Maple Forest	37,900	(47)	-0.1%	39,310	0	39,310	1,410	3.7%
Township	South Branch	143,531	(552)	-0.4%	148,028	0	148,028	4,497	3.1%
City	Grayling	275,564	(23,794)	-7.9%	275,749	0	275,749	185	0.1%

Split Unit: See East Lansing in Ingham County

Split Unit: See Hubbardston in Ionia County

ESTIMATED REVENUE SHARING PAYMENTS TO LOCAL UNITS FOR FY 2001-02 AND 2002-03

Local Unit Type	Name	FY 2001-02			FY 2002-03			Change From FY 2001-02	
		Final Payment	Change From FY 2000-01 Amount	Percent	Estimated Total Payment	Grants to Locals	Estimated Adjusted Payment	Amount	Percent
Delta County		819,059	(43,507)	-5.0%	795,914	23,145	819,059	0	0.0%
Township	Baldwin	59,621	(435)	-0.7%	61,609	0	61,609	1,988	3.3%
Township	Bark River	137,936	9,346	7.3%	143,869	0	143,869	5,933	4.3%
Township	Bay De Noc	25,231	(123)	-0.5%	26,078	0	26,078	847	3.4%
Township	Brampton	89,924	52	0.1%	93,173	0	93,173	3,249	3.6%
Township	Cornell	44,081	230	0.5%	45,753	0	45,753	1,672	3.8%
Township	Ensign	60,393	34	0.1%	62,741	0	62,741	2,348	3.9%
Township	Escanaba	278,396	11,501	4.3%	290,143	0	290,143	11,747	4.2%
Township	Fairbanks	23,990	30	0.1%	24,926	0	24,926	936	3.9%
Township	Ford River	172,426	436	0.3%	179,198	0	179,198	6,772	3.9%
Township	Garden	44,607	(262)	-0.6%	46,039	0	46,039	1,432	3.2%
Township	Maple Ridge	66,405	(85)	-0.1%	68,026	0	68,026	1,621	2.4%
Township	Masonville	141,221	4,573	3.3%	146,679	0	146,679	5,458	3.9%
Township	Nahma	37,608	(37)	-0.1%	38,981	0	38,981	1,373	3.7%
Township	Wells	363,060	3,983	1.1%	378,910	0	378,910	15,850	4.4%
City	Escanaba	1,800,368	(57,302)	-3.1%	1,815,548	0	1,815,548	15,180	0.8%
City	Gladstone	656,135	(21,183)	-3.1%	663,015	0	663,015	6,880	1.0%
Village	Garden	25,754	(65)	-0.3%	26,421	0	26,421	667	2.6%
Dickinson County		557,739	(31,025)	-5.3%	541,161	16,577	557,739	0	0.0%
Township	Breen	40,433	(107)	-0.3%	41,544	0	41,544	1,111	2.7%
Township	Breitung	463,616	(740)	-0.2%	479,447	0	479,447	15,831	3.4%
Township	Felch	56,151	69	0.1%	58,286	0	58,286	2,135	3.8%
Township	Norway	132,125	(369)	-0.3%	137,035	0	137,035	4,910	3.7%
Township	Sagola	92,272	(383)	-0.4%	95,164	0	95,164	2,892	3.1%
Township	Waucedah	60,249	137	0.2%	62,608	0	62,608	2,359	3.9%
Township	West Branch	5,014	(892)	-15.1%	5,191	0	5,191	177	3.5%
City	Iron Mountain	1,057,521	(36,243)	-3.3%	1,063,232	0	1,063,232	5,711	0.5%

ESTIMATED REVENUE SHARING PAYMENTS TO LOCAL UNITS FOR FY 2001-02 AND 2002-03

Local Unit		FY 2001-02			FY 2002-03			Change From FY 2001-02	
		Final Payment	Change From FY 2000-01 Amount	Percent	Estimated Total Payment	Grants to Locals	Estimated Adjusted Payment	Amount	Percent
Type	Name								
City	Kingsford	739,793	(23,762)	-3.1%	748,743	0	748,743	8,950	1.2%
City	Norway	373,353	3,798	1.0%	380,642	0	380,642	7,289	2.0%
Eaton County		2,219,053	(117,120)	-5.0%	2,156,607	62,447	2,219,053	0	0.0%
Township	Bellevue	132,728	452	0.3%	138,111	0	138,111	5,383	4.1%
Township	Benton	208,858	3,132	1.5%	217,299	0	217,299	8,441	4.0%
Township	Brookfield	109,089	2,874	2.7%	113,699	0	113,699	4,610	4.2%
Township	Carmel	201,215	6,926	3.6%	209,647	0	209,647	8,432	4.2%
Township	Chester	135,909	604	0.4%	141,655	0	141,655	5,746	4.2%
Township	Delta Charter	2,686,572	(41,150)	-1.5%	2,747,632	0	2,747,632	61,060	2.3%
Township	Eaton	323,893	105	0.0%	313,069	10,824	323,893	0	0.0%
Township	Eaton Rapids	287,596	942	0.3%	299,022	0	299,022	11,426	4.0%
Township	Hamlin	224,555	1,026	0.5%	233,522	0	233,522	8,967	4.0%
Township	Kalamo	135,916	2,350	1.8%	141,609	0	141,609	5,693	4.2%
Township	Oneida	283,016	473	0.2%	293,613	0	293,613	10,597	3.7%
Township	Roxand	109,390	(937)	-0.8%	112,674	0	112,674	3,284	3.0%
Township	Sunfield	118,885	895	0.8%	123,654	0	123,654	4,769	4.0%
Township	Vermontville	101,177	(267)	-0.3%	105,086	0	105,086	3,909	3.9%
Township	Walton	154,948	41	0.0%	161,916	0	161,916	6,968	4.5%
Township	Windsor	463,527	(206)	0.0%	481,229	0	481,229	17,702	3.8%
City	Charlotte	1,042,231	(30,684)	-2.9%	1,072,746	0	1,072,746	30,515	2.9%
City	Eaton Rapids	559,289	(9,816)	-1.7%	570,612	0	570,612	11,323	2.0%
City	Grand Ledge	881,603	(29,134)	-3.2%	898,015	0	898,015	16,412	1.9%
City	Lansing								
City	Olivet	220,774	16,354	8.0%	238,436	0	238,436	17,662	8.0%
City	Pottersville	259,438	(8,124)	-3.0%	263,219	0	263,219	3,781	1.5%
Village	Bellevue	168,226	7,553	4.7%	178,355	0	178,355	10,129	6.0%
Village	Dimondale	125,704	2,654	2.2%	129,594	0	129,594	3,890	3.1%
Village	Mulliken	54,541	(670)	-1.2%	55,803	0	55,803	1,262	2.3%
Village	Sunfield	65,648	(1,196)	-1.8%	67,211	0	67,211	1,563	2.4%
Village	Vermontville	103,409	5,690	5.8%	104,484	0	104,484	1,075	1.0%

Split Unit: See Lansing in Ingham County

ESTIMATED REVENUE SHARING PAYMENTS TO LOCAL UNITS FOR FY 2001-02 AND 2002-03

Local Unit Type	Name	FY 2001-02			FY 2002-03			Change From FY 2001-02	
		Final Payment	Change From FY 2000-01 Amount	Percent	Estimated Total Payment	Grants to Locals	Estimated Adjusted Payment	Amount	Percent
Emmet County		627,729	(35,463)	-5.3%	608,755	18,973	627,729	0	0.0%
Township	Bear Creek	385,267	1,120	0.3%	400,575	0	400,575	15,308	4.0%
Township	Bliss	42,553	51	0.1%	44,378	0	44,378	1,825	4.3%
Township	Carp Lake	61,899	(130)	-0.2%	64,134	0	64,134	2,235	3.6%
Township	Center	38,099	(38)	-0.1%	39,485	0	39,485	1,386	3.6%
Township	Cross Village	21,091	44	0.2%	21,916	0	21,916	825	3.9%
Township	Friendship	61,455	89	0.1%	63,797	0	63,797	2,342	3.8%
Township	Littlefield	149,124	291	0.2%	154,741	0	154,741	5,617	3.8%
Township	Little Traverse	173,750	570	0.3%	180,834	0	180,834	7,084	4.1%
Township	Maple River	77,791	455	0.6%	80,939	0	80,939	3,148	4.0%
Township	Mc Kinley	49,723	71	0.1%	51,650	0	51,650	1,927	3.9%
Township	Pleasantview	61,494	294	0.5%	63,848	0	63,848	2,354	3.8%
Township	Readmond	36,068	(11)	0.0%	37,398	0	37,398	1,330	3.7%
Township	Resort	182,968	(174)	-0.1%	189,711	0	189,711	6,743	3.7%
Township	Springvale	128,665	259	0.2%	133,660	0	133,660	4,995	3.9%
Township	Wawatam	11,642	42	0.4%	12,113	0	12,113	471	4.0%
Township	West Traverse	102,005	499	0.5%	106,203	0	106,203	4,198	4.1%
City	Harbor Springs	135,050	(2,420)	-1.8%	137,851	0	137,851	2,801	2.1%
City	Petoskey	667,717	(46,590)	-6.5%	664,968	2,749	667,717	0	0.0%
Village	Alanson	82,664	(1,406)	-1.7%	83,416	0	83,416	752	0.9%
Village	Mackinaw City						<i>Split Unit: See Mackinaw City in Cheboygan County</i>		
Village	Pellston	106,156	(2,344)	-2.2%	104,518	1,638	106,156	0	0.0%
Genesee County		10,101,303	(492,969)	-4.7%	9,838,459	262,844	10,101,303	0	0.0%
Township	Argentine	492,368	959	0.2%	512,436	0	512,436	20,068	4.1%
Township	Atlas	441,424	245	0.1%	458,088	0	458,088	16,664	3.8%
Township	Clayton	592,248	(2,835)	-0.5%	612,225	0	612,225	19,977	3.4%
Township	Davison	1,547,836	(14,349)	-0.9%	1,580,858	0	1,580,858	33,022	2.1%
Township	Fenton	987,290	(1,796)	-0.2%	1,022,896	0	1,022,896	35,606	3.6%
Township	Flint	3,037,351	(37,173)	-1.2%	3,116,751	0	3,116,751	79,400	2.6%
Township	Flushing	856,854	(6,827)	-0.8%	883,672	0	883,672	26,818	3.1%
Township	Forest	284,790	691	0.2%	296,748	0	296,748	11,958	4.2%
Township	Gaines	470,330	1,155	0.2%	488,761	0	488,761	18,431	3.9%
Township	Genesee	2,603,237	76,431	3.0%	2,654,143	0	2,654,143	50,906	2.0%
Township	Grand Blanc	2,687,631	(38,890)	-1.4%	2,751,905	0	2,751,905	64,274	2.4%
Township	Montrose	540,605	1,552	0.3%	561,260	0	561,260	20,655	3.8%

ESTIMATED REVENUE SHARING PAYMENTS TO LOCAL UNITS FOR FY 2001-02 AND 2002-03

Local Unit Type	Name	FY 2001-02			FY 2002-03			Change From FY 2001-02	
		Final Payment	Change From FY 2000-01		Estimated Total Payment	Grants to Locals	Estimated Adjusted Payment	Amount	Percent
			Amount	Percent					
Township	Mt Morris	2,772,736	(59,172)	-2.1%	2,796,231	0	2,796,231	23,495	0.8%
Township	Mundy	1,058,595	(18,457)	-1.7%	1,081,358	0	1,081,358	22,763	2.2%
Township	Richfield	678,108	(4,556)	-0.7%	693,930	0	693,930	15,822	2.3%
Township	Thetford	659,351	3,117	0.5%	690,856	0	690,856	31,505	4.8%
Township	Vienna	1,174,685	(13,569)	-1.1%	1,209,709	0	1,209,709	35,024	3.0%
City	Burton	3,098,658	(65,248)	-2.1%	3,162,788	0	3,162,788	64,130	2.1%
City	Clio	339,859	(10,422)	-3.0%	341,358	0	341,358	1,499	0.4%
City	Davison	724,236	(25,983)	-3.5%	728,881	0	728,881	4,645	0.6%
City	Fenton	1,043,681	(29,162)	-2.7%	1,055,932	0	1,055,932	12,251	1.2%
City	Flint	23,150,198	(890,793)	-3.7%	23,311,336	0	23,311,336	161,138	0.7%
City	Flushing	871,029	(24,122)	-2.7%	884,995	0	884,995	13,966	1.6%
City	Grand Blanc	839,524	(26,014)	-3.0%	847,281	0	847,281	7,757	0.9%
City	Montrose	225,203	(7,213)	-3.1%	228,796	0	228,796	3,593	1.6%
City	Mt Morris	474,846	23,630	5.2%	479,819	0	479,819	4,973	1.0%
City	Swartz Creek	559,818	(25,416)	-4.3%	560,221	0	560,221	403	0.1%
City	Linden	292,890	(10,495)	-3.5%	292,461	429	292,890	0	0.0%
Village	Gaines	46,254	(1,607)	-3.4%	47,102	0	47,102	848	1.8%
Village	Goodrich	115,067	(1,659)	-1.4%	117,749	0	117,749	2,682	2.3%
Village	Lennon								
Village	Otisville	109,084	(2,882)	-2.6%	111,872	0	111,872	2,788	2.6%
Village	Otter Lake								
									<i>Split Unit: See Lennon in Shiawassee County</i>
									<i>Split Unit: See Otter Lake in Lapeer County</i>
Gladwin County		516,627	(29,387)	-5.4%	501,011	15,616	516,627	0	0.0%
Township	Beaverton	151,902	7,171	5.0%	157,332	0	157,332	5,430	3.6%
Township	Bentley	71,461	100	0.1%	74,122	0	74,122	2,661	3.7%
Township	Billings	208,712	(512)	-0.2%	216,669	0	216,669	7,957	3.8%
Township	Bourret	37,018	(265)	-0.7%	38,198	0	38,198	1,180	3.2%
Township	Buckeye	104,722	264	0.3%	109,186	0	109,186	4,464	4.3%
Township	Butman	141,192	500	0.4%	146,972	0	146,972	5,780	4.1%
Township	Clement	76,183	(138)	-0.2%	78,865	0	78,865	2,682	3.5%
Township	Gladwin	83,876	(43)	-0.1%	86,753	0	86,753	2,877	3.4%
Township	Grim	9,413	40	0.4%	9,829	0	9,829	416	4.4%
Township	Grout	153,302	233	0.2%	159,391	0	159,391	6,089	4.0%
Township	Hay	111,206	(20)	0.0%	114,870	0	114,870	3,664	3.3%
Township	Sage	205,376	600	0.3%	213,261	0	213,261	7,885	3.8%
Township	Secord	84,582	(7)	0.0%	87,739	0	87,739	3,157	3.7%

ESTIMATED REVENUE SHARING PAYMENTS TO LOCAL UNITS FOR FY 2001-02 AND 2002-03

Local Unit Type	Name	FY 2001-02			FY 2002-03			Change From FY 2001-02	
		Final Payment	Change From FY 2000-01 Amount	Percent	Estimated Total Payment	Grants to Locals	Estimated Adjusted Payment	Amount	Percent
Township	Sherman	79,538	151	0.2%	82,745	0	82,745	3,207	4.0%
Township	Tobacco	198,505	(858)	-0.4%	205,687	0	205,687	7,182	3.6%
City	Beaverton	166,646	(6,799)	-3.9%	166,863	0	166,863	217	0.1%
City	Gladwin	400,729	(16,881)	-4.0%	404,010	0	404,010	3,281	0.8%
Gogebic County		341,382	(19,402)	-5.4%	330,991	10,391	341,382	0	0.0%
Township	Bessemer	122,111	(2,586)	-2.1%	127,262	0	127,262	5,151	4.2%
Township	Erwin	36,085	(6,108)	-14.5%	37,699	0	37,699	1,614	4.5%
Township	Ironwood	196,413	(1,367)	-0.7%	204,483	0	204,483	8,070	4.1%
Township	Marenisco	74,918	(1,754)	-2.3%	76,076	0	76,076	1,158	1.5%
Township	Wakefield	29,737	(6,537)	-18.0%	30,494	0	30,494	757	2.5%
Township	Watersmeet	113,156	(672)	-0.6%	116,758	0	116,758	3,602	3.2%
City	Bessemer	316,036	2,971	0.9%	321,573	0	321,573	5,537	1.8%
City	Ironwood	1,066,424	(36,289)	-3.3%	1,073,945	0	1,073,945	7,521	0.7%
City	Wakefield	329,437	10,163	3.2%	335,338	0	335,338	5,901	1.8%
Grand Traverse County		1,608,522	(87,689)	-5.2%	1,561,768	46,754	1,608,522	0	0.0%
Township	Acme	321,163	(91)	0.0%	333,422	0	333,422	12,259	3.8%
Township	Blair	548,378	(5,293)	-1.0%	563,619	0	563,619	15,241	2.8%
Township	East Bay	759,979	(683)	-0.1%	787,904	0	787,904	27,925	3.7%
Township	Fife Lake	76,757	(380)	-0.5%	79,360	0	79,360	2,603	3.4%
Township	Garfield	1,091,061	(7,260)	-0.7%	1,125,376	0	1,125,376	34,315	3.1%
Township	Grant	70,270	264	0.4%	73,090	0	73,090	2,820	4.0%
Township	Green Lake	369,599	1,610	0.4%	384,852	0	384,852	15,253	4.1%
Township	Long Lake	565,414	2,290	0.4%	588,531	0	588,531	23,117	4.1%
Township	Mayfield	95,991	274	0.3%	99,995	0	99,995	4,004	4.2%
Township	Paradise	205,167	(81)	0.0%	211,958	0	211,958	6,791	3.3%
Township	Peninsula	400,514	(1,685)	-0.4%	413,898	0	413,898	13,384	3.3%
Township	Union	30,287	190	0.6%	31,568	0	31,568	1,281	4.2%
Township	Whitewater	182,504	175	0.1%	189,477	0	189,477	6,973	3.8%
City	Traverse City	1,650,255	(130,455)	-7.3%	1,645,977	4,278	1,650,255	0	0.0%
Village	Fife Lake	48,836	(1,506)	-3.0%	49,830	0	49,830	994	2.0%
Village	Kingsley	156,214	(2,320)	-1.5%	159,237	0	159,237	3,023	1.9%
Gratiot County		881,838	(46,325)	-5.0%	856,186	25,652	881,838	0	0.0%
Township	Arcada	133,799	320	0.2%	139,284	0	139,284	5,485	4.1%

ESTIMATED REVENUE SHARING PAYMENTS TO LOCAL UNITS FOR FY 2001-02 AND 2002-03

Local Unit Type	Name	FY 2001-02			FY 2002-03			Change From FY 2001-02	
		Final Payment	Change From FY 2000-01 Amount	Percent	Estimated Total Payment	Grants to Locals	Estimated Adjusted Payment	Amount	Percent
Township	Bethany	162,646	439	0.3%	164,644	0	164,644	1,998	1.2%
Township	Elba	67,423	(91)	-0.1%	69,924	0	69,924	2,501	3.7%
Township	Emerson	75,733	(115)	-0.2%	78,541	0	78,541	2,808	3.7%
Township	Fulton	149,614	608	0.4%	155,908	0	155,908	6,294	4.2%
Township	Hamilton	40,816	12	0.0%	41,819	0	41,819	1,003	2.5%
Township	Lafayette	52,007	(1,201)	-2.3%	53,747	0	53,747	1,740	3.3%
Township	Newark	87,436	91	0.1%	90,992	0	90,992	3,556	4.1%
Township	New Haven	79,394	171	0.2%	82,686	0	82,686	3,292	4.1%
Township	North Shade	53,325	(1,289)	-2.4%	55,552	0	55,552	2,227	4.2%
Township	North Star	79,000	(138)	-0.2%	82,338	0	82,338	3,338	4.2%
Township	Pine River	198,015	946	0.5%	203,696	0	203,696	5,681	2.9%
Township	Seville	191,190	12,612	7.1%	199,523	0	199,523	8,333	4.4%
Township	Sumner	168,116	8,866	5.6%	173,972	0	173,972	5,856	3.5%
Township	Washington	71,400	(3,176)	-4.3%	74,508	0	74,508	3,108	4.4%
Township	Wheeler	108,231	(8,665)	-7.4%	112,496	0	112,496	4,265	3.9%
City	Alma	1,372,938	(40,148)	-2.8%	1,385,262	0	1,385,262	12,324	0.9%
City	Ithaca	428,032	(3,076)	-0.7%	432,234	0	432,234	4,202	1.0%
City	St Louis	567,746	42,055	8.0%	613,166	0	613,166	45,420	8.0%
Village	Ashley	65,591	4,859	8.0%	66,877	0	66,877	1,286	2.0%
Village	Breckenridge	183,212	5,229	2.9%	186,615	0	186,615	3,403	1.9%
Village	Perrinton	49,688	(850)	-1.7%	51,106	0	51,106	1,418	2.9%
Hillsdale County		961,602	(52,597)	-5.2%	933,551	28,051	961,602	0	0.0%
Township	Adams	150,622	4,681	3.2%	156,709	0	156,709	6,087	4.0%
Township	Allen	107,422	46	0.0%	111,702	0	111,702	4,280	4.0%
Township	Amboy	90,210	313	0.3%	93,938	0	93,938	3,728	4.1%
Township	Cambria	193,904	4,595	2.4%	201,888	0	201,888	7,984	4.1%
Township	Camden	87,221	(35)	0.0%	90,542	0	90,542	3,321	3.8%
Township	Fayette	74,520	(111)	-0.1%	77,328	0	77,328	2,808	3.8%
Township	Hillsdale	149,063	1,532	1.0%	155,258	0	155,258	6,195	4.2%
Township	Jefferson	244,572	711	0.3%	254,893	0	254,893	10,321	4.2%
Township	Litchfield	77,801	(292)	-0.4%	80,510	0	80,510	2,709	3.5%
Township	Moscow	110,586	2,467	2.3%	115,134	0	115,134	4,548	4.1%
Township	Pittsford	122,571	681	0.6%	127,658	0	127,658	5,087	4.2%
Township	Ransom	76,530	3,575	4.9%	79,725	0	79,725	3,195	4.2%
Township	Reading	132,486	479	0.4%	137,971	0	137,971	5,485	4.1%

ESTIMATED REVENUE SHARING PAYMENTS TO LOCAL UNITS FOR FY 2001-02 AND 2002-03

Local Unit Type	Name	FY 2001-02			FY 2002-03			Change From FY 2001-02	
		Final Payment	Change From FY 2000-01 Amount	Percent	Estimated Total Payment	Grants to Locals	Estimated Adjusted Payment	Amount	Percent
Township	Scipio	141,783	718	0.5%	147,321	0	147,321	5,538	3.9%
Township	Somerset	323,340	412	0.1%	335,633	0	335,633	12,293	3.8%
Township	Wheatland	99,593	(382)	-0.4%	103,454	0	103,454	3,861	3.9%
Township	Woodbridge	104,256	605	0.6%	108,445	0	108,445	4,189	4.0%
Township	Wright	89,822	33	0.0%	93,382	0	93,382	3,560	4.0%
City	Hillsdale	1,116,033	(44,848)	-3.9%	1,123,908	0	1,123,908	7,875	0.7%
City	Litchfield	168,527	(8,258)	-4.7%	164,860	3,667	168,527	0	0.0%
City	Reading	145,403	6,123	4.4%	153,083	0	153,083	7,680	5.3%
Village	Allen	18,376	71	0.4%	19,587	0	19,587	1,211	6.6%
Village	Camden	66,181	(1,156)	-1.7%	71,559	0	71,559	5,378	8.1%
Village	Jonesville	276,235	(19,224)	-6.5%	279,450	0	279,450	3,215	1.2%
Village	Montgomery	44,666	2,460	5.8%	48,239	0	48,239	3,573	8.0%
Village	North Adams	59,976	223	0.4%	61,008	0	61,008	1,032	1.7%
Village	Waldron	75,876	4,280	6.0%	77,496	0	77,496	1,620	2.1%
Houghton County		717,497	(40,538)	-5.3%	696,139	21,358	717,497	0	0.0%
Township	Adams	153,472	1,111	0.7%	160,987	0	160,987	7,515	4.9%
Township	Calumet	311,539	1,230	0.4%	324,652	0	324,652	13,113	4.2%
Township	Chassell	156,018	8,174	5.5%	161,518	0	161,518	5,500	3.5%
Township	Duncan	22,189	(1,113)	-4.8%	22,967	0	22,967	778	3.5%
Township	Elm River	13,286	(104)	-0.8%	13,678	0	13,678	392	3.0%
Township	Franklin	113,062	1,803	1.6%	117,785	0	117,785	4,723	4.2%
Township	Hancock	31,230	46	0.1%	32,502	0	32,502	1,272	4.1%
Township	Laird	57,779	3,660	6.8%	59,785	0	59,785	2,006	3.5%
Township	Osceola	171,297	10,887	6.8%	178,335	0	178,335	7,038	4.1%
Township	Portage	273,938	9,893	3.7%	282,902	0	282,902	8,964	3.3%
Township	Quincy	21,901	(18)	-0.1%	22,752	0	22,752	851	3.9%
Township	Schoolcraft	59,702	(997)	-1.6%	62,084	0	62,084	2,382	4.0%
Township	Stanton	112,321	3,700	3.4%	115,130	0	115,130	2,809	2.5%
Township	Torch Lake	139,717	501	0.4%	145,469	0	145,469	5,752	4.1%
City	Hancock	555,235	(8,447)	-1.5%	562,872	0	562,872	7,637	1.4%
City	Houghton	969,662	6,458	0.7%	983,785	0	983,785	14,123	1.5%
Village	Calumet	147,384	10,917	8.0%	152,475	0	152,475	5,091	3.5%
Village	Copper City	25,038	1,855	8.0%	27,041	0	27,041	2,003	8.0%
Village	Lake Linden	158,385	1,962	1.3%	159,365	0	159,365	980	0.6%
Village	Laurium	352,626	22,050	6.7%	358,054	0	358,054	5,428	1.5%

ESTIMATED REVENUE SHARING PAYMENTS TO LOCAL UNITS FOR FY 2001-02 AND 2002-03

Local Unit		FY 2001-02			FY 2002-03			Change From FY 2001-02	
		Final Payment	Change From FY 2000-01 Amount	Percent	Estimated Total Payment	Grants to Locals	Estimated Adjusted Payment	Amount	Percent
Type	Name								
Village	South Range	100,553	3,545	3.7%	102,408	0	102,408	1,855	1.8%
Huron County		789,005	(40,771)	-4.9%	767,291	21,715	789,005	0	0.0%
Township	Bingham	69,535	(547)	-0.8%	71,597	0	71,597	2,062	3.0%
Township	Bloomfield	44,394	(2,322)	-5.0%	45,533	0	45,533	1,139	2.6%
Township	Brookfield	51,174	(3,682)	-6.7%	52,472	0	52,472	1,298	2.5%
Township	Caseville	133,019	171	0.1%	138,188	0	138,188	5,169	3.9%
Township	Chandler	43,441	(1,773)	-3.9%	44,302	0	44,302	861	2.0%
Township	Colfax	164,385	(1,550)	-0.9%	169,476	0	169,476	5,091	3.1%
Township	Dwight	46,751	(2,064)	-4.2%	48,109	0	48,109	1,358	2.9%
Township	Fair Haven	115,288	(1,594)	-1.4%	117,837	0	117,837	2,549	2.2%
Township	Gore	10,649	(63)	-0.6%	10,997	0	10,997	348	3.3%
Township	Grant	68,263	(536)	-0.8%	70,634	0	70,634	2,371	3.5%
Township	Hume	59,179	3	0.0%	61,411	0	61,411	2,232	3.8%
Township	Huron	33,451	(308)	-0.9%	34,436	0	34,436	985	2.9%
Township	Lake	72,920	74	0.1%	75,721	0	75,721	2,801	3.8%
Township	Lincoln	55,894	(982)	-1.7%	57,536	0	57,536	1,642	2.9%
Township	Mckinley	41,474	(2,146)	-4.9%	42,509	0	42,509	1,035	2.5%
Township	Meade	65,694	(683)	-1.0%	67,557	0	67,557	1,863	2.8%
Township	Oliver	73,117	(2,421)	-3.2%	73,660	0	73,660	543	0.7%
Township	Paris	45,332	(4,562)	-9.1%	46,628	0	46,628	1,296	2.9%
Township	Pte Aux Barques	1,046	(307)	-22.7%	950	96	1,046	0	0.0%
Township	Port Austin	65,355	(406)	-0.6%	67,406	0	67,406	2,051	3.1%
Township	Rubicon	37,756	(427)	-1.1%	38,776	0	38,776	1,020	2.7%
Township	Sand Beach	121,027	(1,394)	-1.1%	124,373	0	124,373	3,346	2.8%
Township	Sebewaing	92,495	(8,990)	-8.9%	93,135	0	93,135	640	0.7%
Township	Sheridan	58,943	(334)	-0.6%	60,816	0	60,816	1,873	3.2%
Township	Sherman	99,377	(1,687)	-1.7%	101,587	0	101,587	2,210	2.2%
Township	Sigel	46,748	(1,741)	-3.6%	48,062	0	48,062	1,314	2.8%
Township	Verona	108,904	(794)	-0.7%	112,337	0	112,337	3,433	3.2%
Township	Winsor	71,766	(1,972)	-2.7%	73,109	0	73,109	1,343	1.9%
City	Bad Axe	488,581	(19,136)	-3.8%	484,358	4,223	488,581	0	0.0%
City	Harbor Beach	260,277	(44,999)	-14.7%	259,846	431	260,277	0	0.0%
Village	Caseville	90,590	(3,325)	-3.5%	90,982	0	90,982	392	0.4%
Village	Elkton	120,723	(11,532)	-8.7%	121,114	0	121,114	391	0.3%
Village	Kinde	69,364	(1,662)	-2.3%	70,689	0	70,689	1,325	1.9%

ESTIMATED REVENUE SHARING PAYMENTS TO LOCAL UNITS FOR FY 2001-02 AND 2002-03

Local Unit Type	Name	FY 2001-02			FY 2002-03			Change From FY 2001-02	
		Final Payment	Change From FY 2000-01 Amount	Percent	Estimated Total Payment	Grants to Locals	Estimated Adjusted Payment	Amount	Percent
Village	Owendale	42,925	3,180	8.0%	44,358	0	44,358	1,433	3.3%
Village	Pigeon	144,605	(4,022)	-2.7%	145,504	0	145,504	899	0.6%
Village	Port Austin	73,680	(9,114)	-11.0%	74,025	0	74,025	345	0.5%
Village	Port Hope	32,796	(751)	-2.2%	33,058	0	33,058	262	0.8%
Village	Sebewaing	284,873	(5,376)	-1.9%	287,606	0	287,606	2,733	1.0%
Village	Ubley	103,421	2,534	2.5%	104,645	0	104,645	1,224	1.2%
Ingham County		6,143,482	(315,455)	-4.9%	5,976,317	167,166	6,143,482	0	0.0%
Township	Alaiedon	251,168	(3,672)	-1.4%	232,566	18,602	251,168	0	0.0%
Township	Aurelius	251,598	627	0.3%	260,981	0	260,981	9,383	3.7%
Township	Bunker Hill	151,070	4,204	2.9%	154,545	0	154,545	3,475	2.3%
Township	Delhi	2,127,874	(30,410)	-1.4%	2,172,685	0	2,172,685	44,811	2.1%
Township	Ingham	123,248	2,413	2.0%	127,609	0	127,609	4,361	3.5%
Township	Lansing	876,835	(83,406)	-8.7%	879,551	0	879,551	2,716	0.3%
Township	Leroy	162,951	(38)	0.0%	168,966	0	168,966	6,015	3.7%
Township	Leslie	192,656	5,959	3.2%	196,226	0	196,226	3,570	1.9%
Township	Locke	125,665	3,558	2.9%	130,521	0	130,521	4,856	3.9%
Township	Meridian	3,568,047	(55,216)	-1.5%	3,651,003	0	3,651,003	82,956	2.3%
Township	Onondaga	229,723	1,147	0.5%	238,823	0	238,823	9,100	4.0%
Township	Stockbridge	159,048	(51)	0.0%	165,422	0	165,422	6,374	4.0%
Township	Vevay	275,377	162	0.1%	286,492	0	286,492	11,115	4.0%
Township	Wheatfield	122,754	315	0.3%	127,710	0	127,710	4,956	4.0%
Township	White Oak	88,588	2,524	2.9%	91,201	0	91,201	2,613	2.9%
Township	Williamstown	357,262	662	0.2%	371,512	0	371,512	14,250	4.0%
City	East Lansing	6,799,076	(217,535)	-3.1%	6,873,611	0	6,873,611	74,535	1.1%
City	Lansing	20,515,215	(943,542)	-4.4%	20,281,240	233,975	20,515,215	0	0.0%
City	Leslie	322,036	(11,228)	-3.4%	318,527	3,509	322,036	0	0.0%
City	Mason	726,855	(29,989)	-4.0%	785,003	0	785,003	58,148	8.0%
City	Williamston	389,343	(16,889)	-4.2%	386,001	3,342	389,343	0	0.0%
Village	Dansville	44,606	(341)	-0.8%	45,259	0	45,259	653	1.5%
Village	Stockbridge	138,153	(5,164)	-3.6%	139,920	0	139,920	1,767	1.3%
Village	Webberville	173,916	(6,000)	-3.3%	175,665	0	175,665	1,749	1.0%
Ionia County		1,216,655	(66,621)	-5.2%	1,181,123	35,532	1,216,655	0	0.0%
Township	Berlin	136,193	324	0.2%	141,633	0	141,633	5,440	4.0%
Township	Boston	269,506	873	0.3%	280,515	0	280,515	11,009	4.1%

ESTIMATED REVENUE SHARING PAYMENTS TO LOCAL UNITS FOR FY 2001-02 AND 2002-03

Local Unit Type	Name	FY 2001-02			FY 2002-03			Change From FY 2001-02	
		Final Payment	Change From FY 2000-01 Amount	Percent	Estimated Total Payment	Grants to Locals	Estimated Adjusted Payment	Amount	Percent
Township	Campbell	158,339	(1,629)	-1.0%	163,182	0	163,182	4,843	3.1%
Township	Danby	207,818	136	0.1%	215,406	0	215,406	7,588	3.7%
Township	Easton	222,585	939	0.4%	231,887	0	231,887	9,302	4.2%
Township	Ionia	284,013	1,058	0.4%	295,563	0	295,563	11,550	4.1%
Township	Keene	126,614	174	0.1%	131,810	0	131,810	5,196	4.1%
Township	Lyons	119,464	(249)	-0.2%	123,720	0	123,720	4,256	3.6%
Township	North Plains	77,422	1,780	2.4%	80,784	0	80,784	3,362	4.3%
Township	Odessa	137,778	(883)	-0.6%	142,104	0	142,104	4,326	3.1%
Township	Orange	77,561	330	0.4%	80,804	0	80,804	3,243	4.2%
Township	Orleans	214,507	10,317	5.1%	223,748	0	223,748	9,241	4.3%
Township	Otisco	184,839	472	0.3%	190,622	0	190,622	5,783	3.1%
Township	Portland	188,596	218	0.1%	195,532	0	195,532	6,936	3.7%
Township	Ronald	150,612	826	0.6%	156,650	0	156,650	6,038	4.0%
Township	Sebewa	101,854	(633)	-0.6%	105,408	0	105,408	3,554	3.5%
City	Belding	867,952	(10,430)	-1.2%	872,829	0	872,829	4,877	0.6%
City	Ionia	1,271,079	94,154	8.0%	1,308,702	0	1,308,702	37,623	3.0%
City	Portland	542,539	(24,556)	-4.3%	540,048	2,491	542,539	0	0.0%
Village	Clarksville	38,090	(785)	-2.0%	38,595	0	38,595	505	1.3%
Village	Hubbardston	44,353	3,285	8.0%	44,812	0	44,812	459	1.0%
Village	Lake Odessa	276,917	(2,801)	-1.0%	288,034	0	288,034	11,117	4.0%
Village	Lyons	101,544	(3,201)	-3.1%	102,059	0	102,059	515	0.5%
Village	Muir	85,671	(476)	-0.6%	87,773	0	87,773	2,102	2.5%
Village	Pewamo	64,248	4,759	8.0%	65,892	0	65,892	1,644	2.6%
Village	Saranac	177,155	(6,034)	-3.3%	177,888	0	177,888	733	0.4%
Iosco County		536,085	(30,887)	-5.4%	519,669	16,415	536,085	0	0.0%
Township	Alabaster	38,808	(271)	-0.7%	40,048	0	40,048	1,240	3.2%
Township	Ausable	191,977	(8,551)	-4.3%	196,186	0	196,186	4,209	2.2%
Township	Baldwin	136,674	(1,051)	-0.8%	140,703	0	140,703	4,029	2.9%
Township	Burleigh	63,820	(76)	-0.1%	65,951	0	65,951	2,131	3.3%
Township	Grant	120,284	(197)	-0.2%	124,384	0	124,384	4,100	3.4%
Township	Oscoda	804,122	(236,178)	-22.7%	716,340	87,782	804,122	0	0.0%
Township	Plainfield	323,704	408	0.1%	336,183	0	336,183	12,479	3.9%
Township	Reno	50,254	80	0.2%	52,203	0	52,203	1,949	3.9%
Township	Sherman	38,304	(60)	-0.2%	39,643	0	39,643	1,339	3.5%
Township	Tawas	134,318	(410)	-0.3%	139,499	0	139,499	5,181	3.9%

ESTIMATED REVENUE SHARING PAYMENTS TO LOCAL UNITS FOR FY 2001-02 AND 2002-03

Local Unit Type	Name	FY 2001-02			FY 2002-03			Change From FY 2001-02	
		Final Payment	Change From FY 2000-01 Amount	Percent	Estimated Total Payment	Grants to Locals	Estimated Adjusted Payment	Amount	Percent
Township	Wilber	56,885	(172)	-0.3%	58,854	0	58,854	1,969	3.5%
City	East Tawas	355,431	(11,800)	-3.2%	357,409	0	357,409	1,978	0.6%
City	Tawas	239,836	(14,228)	-5.6%	240,267	0	240,267	431	0.2%
City	Whittemore	55,490	4,110	8.0%	58,279	0	58,279	2,789	5.0%
Iron County		262,138	(14,708)	-5.3%	254,309	7,829	262,138	0	0.0%
Township	Bates	86,938	(1,329)	-1.5%	88,868	0	88,868	1,930	2.2%
Township	Crystal Falls	150,005	(2,663)	-1.7%	152,903	0	152,903	2,898	1.9%
Township	Hematite	31,489	(1,489)	-4.5%	32,077	0	32,077	588	1.9%
Township	Iron River	104,241	(1,145)	-1.1%	107,972	0	107,972	3,731	3.6%
Township	Mansfield	19,454	(653)	-3.2%	20,001	0	20,001	547	2.8%
Township	Mastodon	36,914	(345)	-0.9%	37,980	0	37,980	1,066	2.9%
Township	Stambaugh	101,204	(977)	-1.0%	104,081	0	104,081	2,877	2.8%
City	Caspian	159,834	7,913	5.2%	161,567	0	161,567	1,733	1.1%
City	Crystal Falls	263,421	7,978	3.1%	266,183	0	266,183	2,762	1.0%
City	Gaastra	59,462	2,602	4.6%	59,510	0	59,510	48	0.1%
City	Iron River	538,360	3,136	0.6%	541,679	0	541,679	3,319	0.6%
Village	Alpha	31,811	969	3.1%	31,851	0	31,851	40	0.1%
Isabella County		1,261,912	(71,497)	-5.4%	1,223,606	38,306	1,261,912	0	0.0%
Township	Broomfield	96,824	156	0.2%	100,536	0	100,536	3,712	3.8%
Township	Chippewa	375,769	2,155	0.6%	392,335	0	392,335	16,566	4.4%
Township	Coe	108,579	(3,375)	-3.0%	112,788	0	112,788	4,209	3.9%
Township	Coldwater	56,327	108	0.2%	58,594	0	58,594	2,267	4.0%
Township	Deerfield	238,014	(696)	-0.3%	247,663	0	247,663	9,649	4.1%
Township	Denver	90,961	534	0.6%	95,156	0	95,156	4,195	4.6%
Township	Fremont	109,790	432	0.4%	113,728	0	113,728	3,938	3.6%
Township	Gilmore	104,614	598	0.6%	108,847	0	108,847	4,233	4.0%
Township	Isabella	137,515	1,867	1.4%	143,415	0	143,415	5,900	4.3%
Township	Lincoln	151,518	7,421	5.2%	157,853	0	157,853	6,335	4.2%
Township	Nottawa	175,672	566	0.3%	183,113	0	183,113	7,441	4.2%
Township	Rolland	98,147	3,008	3.2%	101,951	0	101,951	3,804	3.9%
Township	Sherman	128,304	34	0.0%	132,852	0	132,852	4,548	3.5%
Township	Union	619,126	(5,243)	-0.8%	636,178	0	636,178	17,052	2.8%
Township	Vernon	104,142	663	0.6%	108,242	0	108,242	4,100	3.9%
Township	Wise	109,508	3,018	2.8%	113,732	0	113,732	4,224	3.9%

ESTIMATED REVENUE SHARING PAYMENTS TO LOCAL UNITS FOR FY 2001-02 AND 2002-03

Local Unit		FY 2001-02			FY 2002-03			Change From FY 2001-02	
		Final Payment	Change From FY 2000-01 Amount	Percent	Estimated Total Payment	Grants to Locals	Estimated Adjusted Payment	Amount	Percent
Type	Name								
City	Clare								<i>Split Unit: See Clare in Clare County</i>
City	Mt Pleasant	3,539,780	(64,409)	-1.8%	3,604,385	0	3,604,385	64,605	1.8%
Village	Lake Isabella	90,438	643	0.7%	94,114	0	94,114	3,676	4.1%
Village	Rosebush	32,963	137	0.4%	34,214	0	34,214	1,251	3.8%
Village	Shepherd	181,504	13,445	8.0%	186,675	0	186,675	5,171	2.8%
Jackson County		3,445,780	(175,245)	-4.8%	3,351,690	94,090	3,445,780	0	0.0%
Township	Blackman	1,679,960	(7,018)	-0.4%	1,735,881	0	1,735,881	55,921	3.3%
Township	Columbia	459,559	319	0.1%	476,281	0	476,281	16,722	3.6%
Township	Concord	121,427	(168)	-0.1%	125,902	0	125,902	4,475	3.7%
Township	Grass Lake	265,487	(778)	-0.3%	274,785	0	274,785	9,298	3.5%
Township	Hanover	260,746	(148)	-0.1%	270,416	0	270,416	9,670	3.7%
Township	Henrietta	342,605	804	0.2%	356,074	0	356,074	13,469	3.9%
Township	Leoni	1,105,742	(4,184)	-0.4%	1,141,627	0	1,141,627	35,885	3.2%
Township	Liberty	222,148	60	0.0%	230,305	0	230,305	8,157	3.7%
Township	Napoleon	531,738	6,634	1.3%	552,242	0	552,242	20,504	3.9%
Township	Norvell	224,160	3,331	1.5%	232,490	0	232,490	8,330	3.7%
Township	Parma	189,945	7,890	4.3%	197,889	0	197,889	7,944	4.2%
Township	Pulaski	154,298	5,789	3.9%	160,526	0	160,526	6,228	4.0%
Township	Rives	368,235	1,367	0.4%	381,850	0	381,850	13,615	3.7%
Township	Sandstone	235,330	786	0.3%	242,210	0	242,210	6,880	2.9%
Township	Spring Arbor	602,414	44,623	8.0%	627,401	0	627,401	24,987	4.1%
Township	Springport	122,187	1,624	1.3%	122,844	0	122,844	657	0.5%
Township	Summit	1,746,394	42,106	2.5%	1,821,004	0	1,821,004	74,610	4.3%
Township	Tompkins	214,082	1,223	0.6%	220,475	0	220,475	6,393	3.0%
Township	Waterloo	231,898	(609)	-0.3%	240,950	0	240,950	9,052	3.9%
City	Jackson	6,422,942	(318,084)	-4.7%	6,367,611	55,331	6,422,942	0	0.0%
Village	Brooklyn	138,892	(3,289)	-2.3%	136,128	2,764	138,892	0	0.0%
Village	Cement City								<i>Split Unit: See Cement City in Lenawee County</i>
Village	Concord	134,068	(3,838)	-2.8%	136,004	0	136,004	1,936	1.4%
Village	Grass Lake	107,273	(2,404)	-2.2%	109,689	0	109,689	2,416	2.3%
Village	Hanover	46,386	(596)	-1.3%	47,467	0	47,467	1,081	2.3%
Village	Parma	85,916	(2,362)	-2.7%	92,192	0	92,192	6,276	7.3%
Village	Springport	98,786	399	0.4%	106,232	0	106,232	7,446	7.5%
Kalamazoo County		5,283,418	(269,649)	-4.9%	5,139,487	143,930	5,283,418	0	0.0%

ESTIMATED REVENUE SHARING PAYMENTS TO LOCAL UNITS FOR FY 2001-02 AND 2002-03

Local Unit Type	Name	FY 2001-02			FY 2002-03			Change From FY 2001-02	
		Final Payment	Change From FY 2000-01 Amount	Percent	Estimated Total Payment	Grants to Locals	Estimated Adjusted Payment	Amount	Percent
Township	Alamo	301,909	(1,099)	-0.4%	312,950	0	312,950	11,041	3.7%
Township	Brady	271,447	252	0.1%	281,929	0	281,929	10,482	3.9%
Township	Charleston	135,005	(78)	-0.1%	140,268	0	140,268	5,263	3.9%
Township	Climax	126,889	(443)	-0.3%	131,237	0	131,237	4,348	3.4%
Township	Comstock	1,228,095	1,405	0.1%	1,262,838	0	1,262,838	34,743	2.8%
Township	Cooper	701,762	(1,725)	-0.2%	726,689	0	726,689	24,927	3.6%
Township	Kalamazoo	2,680,134	(16,286)	-0.6%	2,711,354	0	2,711,354	31,220	1.2%
Township	Oshtemo	1,455,543	(28,222)	-1.9%	1,489,418	0	1,489,418	33,875	2.3%
Township	Pavilion	447,468	7,281	1.7%	466,036	0	466,036	18,568	4.1%
Township	Prairie Ronde	153,787	677	0.4%	160,188	0	160,188	6,401	4.2%
Township	Richland	450,927	(732)	-0.2%	466,863	0	466,863	15,936	3.5%
Township	Ross	313,674	(189)	-0.1%	325,333	0	325,333	11,659	3.7%
Township	Schoolcraft	298,828	215	0.1%	310,445	0	310,445	11,617	3.9%
Township	Texas	815,007	1,754	0.2%	847,250	0	847,250	32,243	4.0%
Township	Wakeshma	108,537	117	0.1%	110,367	0	110,367	1,830	1.7%
City	Galesburg	217,660	16,123	8.0%	227,545	0	227,545	9,885	4.5%
City	Kalamazoo	12,292,908	(577,597)	-4.5%	12,291,074	1,834	12,292,908	0	0.0%
City	Parchment	215,115	(13,043)	-5.7%	232,324	0	232,324	17,209	8.0%
City	Portage	4,696,115	(139,609)	-2.9%	4,737,996	0	4,737,996	41,881	0.9%
Village	Augusta	90,937	(967)	-1.1%	93,846	0	93,846	2,909	3.2%
Village	Climax	85,452	(964)	-1.1%	87,173	0	87,173	1,721	2.0%
Village	Richland	55,423	(1,574)	-2.8%	56,101	0	56,101	678	1.2%
Village	Schoolcraft	186,372	(5,670)	-3.0%	186,708	0	186,708	336	0.2%
Village	Vicksburg	270,844	(14,570)	-5.1%	277,850	0	277,850	7,006	2.6%
Kalkaska County		324,364	(18,710)	-5.5%	314,458	9,906	324,364	0	0.0%
Township	Bear Lake	57,577	(321)	-0.6%	59,439	0	59,439	1,862	3.2%
Township	Blue Lake	30,529	89	0.3%	31,751	0	31,751	1,222	4.0%
Township	Boardman	119,059	1,707	1.5%	124,192	0	124,192	5,133	4.3%
Township	Clearwater	178,782	302	0.2%	185,710	0	185,710	6,928	3.9%
Township	Coldsprings	109,442	106	0.1%	113,574	0	113,574	4,132	3.8%
Township	Excelsior	65,438	(34)	-0.1%	67,763	0	67,763	2,325	3.6%
Township	Garfield	59,055	150	0.3%	61,347	0	61,347	2,292	3.9%
Township	Kalkaska	190,576	775	0.4%	198,354	0	198,354	7,778	4.1%
Township	Oliver	19,716	(1,209)	-5.8%	20,517	0	20,517	801	4.1%
Township	Orange	96,504	2,276	2.4%	99,954	0	99,954	3,450	3.6%

ESTIMATED REVENUE SHARING PAYMENTS TO LOCAL UNITS FOR FY 2001-02 AND 2002-03

Local Unit Type	Name	FY 2001-02			FY 2002-03			Change From FY 2001-02	
		Final Payment	Change From FY 2000-01 Amount	Percent	Estimated Total Payment	Grants to Locals	Estimated Adjusted Payment	Amount	Percent
Township	Rapid River	77,376	(112)	-0.1%	80,061	0	80,061	2,685	3.5%
Township	Springfield	99,904	1,174	1.2%	104,759	0	104,759	4,855	4.9%
Village	Kalkaska	219,557	(3,411)	-1.5%	227,424	0	227,424	7,867	3.6%
Kent County		12,264,771	(648,903)	-5.0%	11,919,463	345,308	12,264,771	0	0.0%
Township	Ada	750,876	(2,337)	-0.3%	776,257	0	776,257	25,381	3.4%
Township	Algoma	579,288	(3,337)	-0.6%	600,148	0	600,148	20,860	3.6%
Township	Alpine	1,100,932	(154)	0.0%	1,144,489	0	1,144,489	43,557	4.0%
Township	Bowne	217,003	(1,612)	-0.7%	223,968	0	223,968	6,965	3.2%
Township	Byron	1,401,651	402	0.0%	1,455,499	0	1,455,499	53,848	3.8%
Township	Caledonia	597,361	(1,736)	-0.3%	618,755	0	618,755	21,394	3.6%
Township	Cannon	915,933	386	0.0%	951,422	0	951,422	35,489	3.9%
Township	Cascade	1,175,970	(7,972)	-0.7%	1,212,888	0	1,212,888	36,918	3.1%
Township	Courtland	443,252	(18)	0.0%	459,777	0	459,777	16,525	3.7%
Township	Gaines	1,615,736	(6,170)	-0.4%	1,683,630	0	1,683,630	67,894	4.2%
Township	Grand Rapids	1,061,532	(795)	-0.1%	1,145,410	0	1,145,410	83,878	7.9%
Township	Grattan	272,079	(375)	-0.1%	282,144	0	282,144	10,065	3.7%
Township	Lowell	410,338	20,473	5.3%	426,510	0	426,510	16,172	3.9%
Township	Nelson	289,940	1,120	0.4%	300,677	0	300,677	10,737	3.7%
Township	Oakfield	390,453	697	0.2%	405,473	0	405,473	15,020	3.8%
Township	Plainfield	2,517,082	(11,718)	-0.5%	2,607,267	0	2,607,267	90,185	3.6%
Township	Solon	365,020	2,566	0.7%	376,952	0	376,952	11,932	3.3%
Township	Sparta	356,817	296	0.1%	370,561	0	370,561	13,744	3.9%
Township	Spencer	291,361	(817)	-0.3%	299,577	0	299,577	8,216	2.8%
Township	Tyrone	240,520	(949)	-0.4%	248,581	0	248,581	8,061	3.4%
Township	Vergennes	267,711	695	0.3%	278,472	0	278,472	10,761	4.0%
City	Cedar Springs	362,411	(21,986)	-5.7%	364,105	0	364,105	1,694	0.5%
City	East Grand Rapids	1,156,471	(46,235)	-3.8%	1,160,272	0	1,160,272	3,801	0.3%
City	Grand Rapids	27,348,714	358,658	1.3%	27,628,805	0	27,628,805	280,091	1.0%
City	Grandville	1,557,665	(44,077)	-2.8%	1,581,953	0	1,581,953	24,288	1.6%
City	Kentwood	4,031,085	(45,152)	-1.1%	4,142,342	0	4,142,342	111,257	2.8%
City	Lowell	487,524	(20,793)	-4.1%	486,687	837	487,524	0	0.0%
City	Rockford	488,647	(18,838)	-3.7%	489,617	0	489,617	970	0.2%
City	Walker	2,050,591	(40,426)	-1.9%	2,090,591	0	2,090,591	40,000	2.0%
City	Wyoming	7,482,168	(181,585)	-2.4%	7,582,144	0	7,582,144	99,976	1.3%
Village	Caledonia	97,139	(1,769)	-1.8%	99,185	0	99,185	2,046	2.1%

ESTIMATED REVENUE SHARING PAYMENTS TO LOCAL UNITS FOR FY 2001-02 AND 2002-03

Local Unit		FY 2001-02			FY 2002-03			Change From FY 2001-02	
		Final Payment	Change From FY 2000-01 Amount	Percent	Estimated Total Payment	Grants to Locals	Estimated Adjusted Payment	Amount	Percent
Type	Name								
Village	Casnovia	33,318	(2,197)	-6.2%	34,039	0	34,039	721	2.2%
Village	Kent City	110,831	(894)	-0.8%	113,287	0	113,287	2,456	2.2%
Village	Sand Lake	62,613	1,180	1.9%	63,341	0	63,341	728	1.2%
Village	Sparta	516,992	(22,582)	-4.2%	519,965	0	519,965	2,973	0.6%
Keweenaw County		43,803	(2,602)	-5.6%	42,418	1,385	43,803	0	0.0%
Township	Allouez	118,289	(116)	-0.1%	123,177	0	123,177	4,888	4.1%
Township	Eagle Harbor	25,204	152	0.6%	26,736	0	26,736	1,532	6.1%
Township	Grant	13,622	(161)	-1.2%	13,960	0	13,960	338	2.5%
Township	Houghton	9,678	(57)	-0.6%	9,524	0	9,524	(154)	-1.6%
Township	Sherman	4,730	(47)	-1.0%	4,869	0	4,869	139	2.9%
Village	Ahmeek	20,050	1,485	8.0%	21,654	0	21,654	1,604	8.0%
Lake County		230,887	(12,518)	-5.1%	224,283	6,604	230,887	0	0.0%
Township	Chase	93,338	(18)	0.0%	97,368	0	97,368	4,030	4.3%
Township	Cherry Valley	27,648	146	0.5%	28,784	0	28,784	1,136	4.1%
Township	Dover	26,200	(50)	-0.2%	27,176	0	27,176	976	3.7%
Township	Eden	28,681	(94)	-0.3%	29,687	0	29,687	1,006	3.5%
Township	Elk	65,910	207	0.3%	68,552	0	68,552	2,642	4.0%
Township	Ellsworth	56,895	162	0.3%	59,102	0	59,102	2,207	3.9%
Township	Lake	61,983	63	0.1%	64,379	0	64,379	2,396	3.9%
Township	Newkirk	37,291	(10)	0.0%	38,690	0	38,690	1,399	3.8%
Township	Peacock	33,685	(56)	-0.2%	34,916	0	34,916	1,231	3.7%
Township	Pinora	50,526	(24)	0.0%	52,383	0	52,383	1,857	3.7%
Township	Pleasant Plains	77,327	(838)	-1.1%	79,468	0	79,468	2,141	2.8%
Township	Sauble	24,424	(46)	-0.2%	25,293	0	25,293	869	3.6%
Township	Sweetwater	18,087	33	0.2%	18,771	0	18,771	684	3.8%
Township	Webber	92,380	(1,325)	-1.4%	95,625	0	95,625	3,245	3.5%
Township	Yates	61,338	(1,319)	-2.1%	62,430	0	62,430	1,092	1.8%

ESTIMATED REVENUE SHARING PAYMENTS TO LOCAL UNITS FOR FY 2001-02 AND 2002-03

Local Unit		FY 2001-02			FY 2002-03			Change From FY 2001-02	
		Final Payment	Change From FY 2000-01 Amount	Percent	Estimated Total Payment	Grants to Locals	Estimated Adjusted Payment	Amount	Percent
Village	Baldwin	126,289	(1,580)	-1.2%	129,628	0	129,628	3,339	2.6%
Village	Luther	40,585	3,006	8.0%	41,827	0	41,827	1,242	3.1%
Lapeer County		1,717,238	(98,863)	-5.4%	1,664,350	52,888	1,717,238	0	0.0%
Township	Almont	242,863	(611)	-0.3%	251,354	0	251,354	8,491	3.5%
Township	Arcadia	243,464	42	0.0%	252,927	0	252,927	9,463	3.9%
Township	Attica	369,730	900	0.2%	383,090	0	383,090	13,360	3.6%
Township	Burlington	83,478	(1,195)	-1.4%	86,108	0	86,108	2,630	3.2%
Township	Burnside	147,801	4,272	3.0%	153,678	0	153,678	5,877	4.0%
Township	Deerfield	447,485	(68)	0.0%	464,034	0	464,034	16,549	3.7%
Township	Dryden	300,797	(2,742)	-0.9%	309,875	0	309,875	9,078	3.0%
Township	Elba	425,622	(761)	-0.2%	440,570	0	440,570	14,948	3.5%
Township	Goodland	134,211	(615)	-0.5%	138,972	0	138,972	4,761	3.5%
Township	Hadley	351,263	(183)	-0.1%	364,310	0	364,310	13,047	3.7%
Township	Imlay	207,740	281	0.1%	216,015	0	216,015	8,275	4.0%
Township	Lapeer	386,889	477	0.1%	401,251	0	401,251	14,362	3.7%
Township	Marathon	269,572	(121)	0.0%	280,133	0	280,133	10,561	3.9%
Township	Mayfield	601,353	13,004	2.2%	623,785	0	623,785	22,432	3.7%
Township	Metamora	290,524	(2,609)	-0.9%	299,154	0	299,154	8,630	3.0%
Township	North Branch	199,797	(1,896)	-0.9%	206,994	0	206,994	7,197	3.6%
Township	Oregon	481,245	(723)	-0.2%	499,524	0	499,524	18,279	3.8%
Township	Rich	109,104	148	0.1%	113,819	0	113,819	4,715	4.3%
City	Brown City							<i>Split Unit: See Brown City in Sanilac County</i>	
City	Imlay City	499,273	(32,935)	-6.2%	499,798	0	499,798	525	0.1%
City	Lapeer	965,998	(39,965)	-4.0%	973,276	0	973,276	7,278	0.8%
Village	Almont	335,491	(12,902)	-3.7%	337,016	0	337,016	1,525	0.5%
Village	Clifford	47,583	(2,158)	-4.3%	44,866	2,717	47,583	0	0.0%
Village	Columbiaville	109,227	(2,754)	-2.5%	110,758	0	110,758	1,531	1.4%
Village	Dryden	84,748	(2,543)	-2.9%	85,550	0	85,550	802	0.9%
Village	Metamora	47,270	(2,141)	-4.3%	48,014	0	48,014	744	1.6%
Village	North Branch	126,642	(6,884)	-5.2%	130,377	0	130,377	3,735	2.9%
Village	Otter Lake	53,315	(788)	-1.5%	55,925	0	55,925	2,610	4.9%
Leelanau County		406,698	(23,879)	-5.5%	393,964	12,734	406,698	0	0.0%
Township	Bingham	177,752	304	0.2%	184,730	0	184,730	6,978	3.9%
Township	Centerville	78,958	319	0.4%	82,240	0	82,240	3,282	4.2%

ESTIMATED REVENUE SHARING PAYMENTS TO LOCAL UNITS FOR FY 2001-02 AND 2002-03

Local Unit Type	Name	FY 2001-02			FY 2002-03			Change From FY 2001-02	
		Final Payment	Change From FY 2000-01 Amount	Percent	Estimated Total Payment	Grants to Locals	Estimated Adjusted Payment	Amount	Percent
Township	Cleveland	74,178	360	0.5%	77,326	0	77,326	3,148	4.2%
Township	Elmwood	319,840	(152)	0.0%	331,712	0	331,712	11,872	3.7%
Township	Empire	50,723	100	0.2%	52,694	0	52,694	1,971	3.9%
Township	Glen Arbor	57,942	(148)	-0.3%	59,961	0	59,961	2,019	3.5%
Township	Kasson	116,464	510	0.4%	121,197	0	121,197	4,733	4.1%
Township	Leelanau	107,732	64	0.1%	111,805	0	111,805	4,073	3.8%
Township	Leland	145,103	355	0.2%	150,847	0	150,847	5,744	4.0%
Township	Solon	113,035	403	0.4%	117,711	0	117,711	4,676	4.1%
Township	Suttons Bay	172,771	734	0.4%	179,884	0	179,884	7,113	4.1%
City	Traverse City								
							<i>Split Unit: See Traverse City in Grand Traverse County</i>		
Village	Empire	33,541	(770)	-2.2%	34,053	0	34,053	512	1.5%
Village	Northport	55,801	(1,012)	-1.8%	56,959	0	56,959	1,158	2.1%
Village	Suttons Bay	50,069	(880)	-1.7%	51,111	0	51,111	1,042	2.1%
Lenawee County		2,057,917	(110,420)	-5.1%	1,999,231	58,687	2,057,917	0	0.0%
Township	Adrian	429,927	702	0.2%	447,134	0	447,134	17,207	4.0%
Township	Blissfield	56,689	(850)	-1.5%	58,019	0	58,019	1,330	2.3%
Township	Cambridge	335,409	(1,911)	-0.6%	347,804	0	347,804	12,395	3.7%
Township	Clinton	113,702	(2,290)	-2.0%	115,886	0	115,886	2,184	1.9%
Township	Deerfield	61,565	(675)	-1.1%	63,247	0	63,247	1,682	2.7%
Township	Dover	128,364	244	0.2%	133,304	0	133,304	4,940	3.8%
Township	Fairfield	151,278	(4,111)	-2.6%	156,211	0	156,211	4,933	3.3%
Township	Franklin	225,984	(621)	-0.3%	233,758	0	233,758	7,774	3.4%
Township	Hudson	110,217	144	0.1%	114,420	0	114,420	4,203	3.8%
Township	Macon	110,476	(38)	0.0%	114,637	0	114,637	4,161	3.8%
Township	Madison	580,114	(3,235)	-0.6%	600,434	0	600,434	20,320	3.5%
Township	Medina	99,039	(7,200)	-6.8%	102,746	0	102,746	3,707	3.7%
Township	Ogden	86,066	(5,343)	-5.8%	88,567	0	88,567	2,501	2.9%
Township	Palmyra	178,680	581	0.3%	186,243	0	186,243	7,563	4.2%
Township	Raisin	503,782	(1,966)	-0.4%	520,768	0	520,768	16,986	3.4%
Township	Ridgeway	72,366	(962)	-1.3%	74,185	0	74,185	1,819	2.5%
Township	Riga	115,215	(1,461)	-1.3%	118,747	0	118,747	3,532	3.1%
Township	Rollin	205,662	(8,050)	-3.8%	213,189	0	213,189	7,527	3.7%
Township	Rome	139,756	3,153	2.3%	144,693	0	144,693	4,937	3.5%
Township	Seneca	100,647	1,584	1.6%	103,381	0	103,381	2,734	2.7%
Township	Tecumseh	139,927	379	0.3%	145,600	0	145,600	5,673	4.1%

ESTIMATED REVENUE SHARING PAYMENTS TO LOCAL UNITS FOR FY 2001-02 AND 2002-03

Local Unit		FY 2001-02			FY 2002-03			Change From FY 2001-02	
		Final Payment	Change From FY 2000-01 Amount	Percent	Estimated Total Payment	Grants to Locals	Estimated Adjusted Payment	Amount	Percent
Township	Woodstock	220,700	(806)	-0.4%	228,244	0	228,244	7,544	3.4%
City	Adrian	2,856,258	(104,386)	-3.5%	2,873,929	0	2,873,929	17,671	0.6%
City	Hudson	339,307	(12,144)	-3.5%	343,004	0	343,004	3,697	1.1%
City	Morenci	326,522	7,072	2.2%	329,319	0	329,319	2,797	0.9%
City	Tecumseh	989,084	(44,562)	-4.3%	985,167	3,917	989,084	0	0.0%
Village	Addison	74,351	(2,467)	-3.2%	74,056	295	74,351	0	0.0%
Village	Blissfield	394,396	(14,804)	-3.6%	394,824	0	394,824	428	0.1%
Village	Britton	77,726	183	0.2%	79,012	0	79,012	1,286	1.7%
Village	Cement City	50,356	(350)	-0.7%	51,280	0	51,280	924	1.8%
Village	Clayton	37,629	(373)	-1.0%	38,351	0	38,351	722	1.9%
Village	Clinton	248,781	(20,551)	-7.6%	252,042	0	252,042	3,261	1.3%
Village	Deerfield	107,973	7,998	8.0%	112,063	0	112,063	4,090	3.8%
Village	Onsted	81,614	(1,801)	-2.2%	81,196	418	81,614	0	0.0%
Livingston County		3,029,205	(176,986)	-5.5%	2,935,163	94,042	3,029,205	0	0.0%
Township	Brighton	1,330,470	413	0.0%	1,381,396	0	1,381,396	50,926	3.8%
Township	Cohoctah	265,482	(414)	-0.2%	274,795	0	274,795	9,313	3.5%
Township	Conway	209,480	(3,361)	-1.6%	216,549	0	216,549	7,069	3.4%
Township	Deerfield	310,513	811	0.3%	322,173	0	322,173	11,660	3.8%
Township	Genoa	1,187,112	(884)	-0.1%	1,231,648	0	1,231,648	44,536	3.8%
Township	Green Oak	1,166,150	(128)	0.0%	1,209,129	0	1,209,129	42,979	3.7%
Township	Hamburg	1,620,131	3,923	0.2%	1,685,157	0	1,685,157	65,026	4.0%
Township	Handy	301,054	182	0.1%	311,856	0	311,856	10,802	3.6%
Township	Hartland	824,240	(19)	0.0%	854,912	0	854,912	30,672	3.7%
Township	Howell	443,473	(4,096)	-0.9%	456,599	0	456,599	13,126	3.0%
Township	Iosco	230,149	(2,478)	-1.1%	237,227	0	237,227	7,078	3.1%
Township	Marion	510,924	(1,965)	-0.4%	529,157	0	529,157	18,233	3.6%
Township	Oceola	634,586	(2,559)	-0.4%	655,210	0	655,210	20,624	3.3%
Township	Putnam	397,928	323	0.1%	413,064	0	413,064	15,136	3.8%
Township	Tyrone	623,930	2,976	0.5%	649,164	0	649,164	25,234	4.0%
Township	Unadilla	250,461	7,224	3.0%	259,611	0	259,611	9,150	3.7%
City	Brighton	720,526	(29,072)	-3.9%	720,673	0	720,673	147	0.0%
City	Howell	1,036,322	(46,827)	-4.3%	1,035,157	1,165	1,036,322	0	0.0%
Village	Fowlerville	370,432	(14,076)	-3.7%	356,103	14,329	370,432	0	0.0%
Village	Pinckney	200,477	(9,096)	-4.3%	199,545	932	200,477	0	0.0%

ESTIMATED REVENUE SHARING PAYMENTS TO LOCAL UNITS FOR FY 2001-02 AND 2002-03

Local Unit Type	Name	FY 2001-02			FY 2002-03			Change From FY 2001-02	
		Final Payment	Change From FY 2000-01 Amount	Percent	Estimated Total Payment	Grants to Locals	Estimated Adjusted Payment	Amount	Percent
Luce County		131,252	(7,418)	-5.3%	127,280	3,972	131,252	0	0.0%
Township	Columbus	16,050	45	0.3%	16,705	0	16,705	655	4.1%
Township	Lakefield	79,333	(37)	0.0%	82,499	0	82,499	3,166	4.0%
Township	Mcmillan	92,274	331	0.4%	95,953	0	95,953	3,679	4.0%
Township	Pentland	181,510	965	0.5%	189,513	0	189,513	8,003	4.4%
Village	Newberry	264,877	5,689	2.2%	270,663	0	270,663	5,786	2.2%
Mackinac County		232,631	(13,497)	-5.5%	225,448	7,183	232,631	0	0.0%
Township	Bois Blanc	6,161	(150)	-2.4%	6,252	0	6,252	91	1.5%
Township	Brevort	53,389	(547)	-1.0%	54,549	0	54,549	1,160	2.2%
Township	Clark	173,503	(1,548)	-0.9%	178,606	0	178,606	5,103	2.9%
Township	Garfield	94,287	(149)	-0.2%	97,645	0	97,645	3,358	3.6%
Township	Hendricks	14,831	(150)	-1.0%	15,286	0	15,286	455	3.1%
Township	Hudson	16,747	(133)	-0.8%	17,279	0	17,279	532	3.2%
Township	Marquette	51,680	(389)	-0.7%	53,419	0	53,419	1,739	3.4%
Township	Moran	82,391	(298)	-0.4%	85,116	0	85,116	2,725	3.3%
Township	Newton	26,041	20	0.1%	27,050	0	27,050	1,009	3.9%
Township	Portage	85,056	(909)	-1.1%	87,406	0	87,406	2,350	2.8%
Township	St Ignace	85,657	3,718	4.5%	88,168	0	88,168	2,511	2.9%
City	Mackinac Island	49,812	(1,565)	-3.0%	50,229	0	50,229	417	0.8%
City	St Ignace	286,048	(10,838)	-3.7%	289,621	0	289,621	3,573	1.2%
Macomb County		16,454,064	(889,974)	-5.1%	15,980,175	473,889	16,454,064	0	0.0%
Township	Armada	291,051	(2,564)	-0.9%	299,587	0	299,587	8,536	2.9%
Township	Bruce	512,887	(7,467)	-1.4%	527,079	0	527,079	14,192	2.8%
Township	Chesterfield	3,193,355	(29,622)	-0.9%	3,289,055	0	3,289,055	95,700	3.0%
Township	Clinton	9,429,503	(205,194)	-2.1%	9,636,133	0	9,636,133	206,630	2.2%
Township	Harrison	2,230,110	(34,734)	-1.5%	2,282,801	0	2,282,801	52,691	2.4%
Township	Lake	0	0	0.0%	0	0	0	0	ERR
Township	Lenox	353,171	82	0.0%	369,302	0	369,302	16,131	4.6%
Township	Macomb	4,057,183	(10,331)	-0.3%	4,207,038	0	4,207,038	149,855	3.7%
Township	Ray	306,788	(3,756)	-1.2%	314,968	0	314,968	8,180	2.7%
Township	Richmond	255,232	186	0.1%	265,625	0	265,625	10,393	4.1%
Township	Shelby	6,006,262	(98,678)	-1.6%	6,142,289	0	6,142,289	136,027	2.3%
Township	Washington	1,348,108	(2,817)	-0.2%	1,397,829	0	1,397,829	49,721	3.7%
City	Center Line	1,269,653	(195,156)	-13.3%	1,239,348	30,305	1,269,653	0	0.0%

ESTIMATED REVENUE SHARING PAYMENTS TO LOCAL UNITS FOR FY 2001-02 AND 2002-03

Local Unit		FY 2001-02			FY 2002-03			Change From FY 2001-02	
		Final Payment	Change From FY 2000-01 Amount	Percent	Estimated Total Payment	Grants to Locals	Estimated Adjusted Payment	Amount	Percent
City	Eastpointe	4,547,393	(173,290)	-3.7%	4,592,991	0	4,592,991	45,598	1.0%
City	Fraser	1,743,802	(74,434)	-4.1%	1,740,884	2,918	1,743,802	0	0.0%
City	Memphis	137,662	(5,540)	-3.9%	137,486	176	137,662	0	0.0%
City	Mt Clemens	2,561,374	(187,030)	-6.8%	2,539,659	21,715	2,561,374	0	0.0%
City	New Baltimore	745,223	(25,664)	-3.3%	749,273	0	749,273	4,050	0.5%
City	Richmond	588,654	(43,410)	-6.9%	579,622	9,032	588,654	0	0.0%
City	Roseville	5,971,086	(251,656)	-4.0%	5,997,830	0	5,997,830	26,744	0.4%
City	St Clair Shores	6,846,424	(305,882)	-4.3%	6,955,468	0	6,955,468	109,044	1.6%
City	Sterling Heights	13,030,976	(366,477)	-2.7%	13,191,760	0	13,191,760	160,784	1.2%
City	Utica	553,929	(79,146)	-12.5%	548,159	5,770	553,929	0	0.0%
City	Warren	17,662,475	(1,203,877)	-6.4%	17,551,557	110,918	17,662,475	0	0.0%
Village	Armada	193,317	(11,278)	-5.5%	190,836	2,481	193,317	0	0.0%
Village	Grosse Pte Shores								
Village	New Haven	420,048	(23,786)	-5.4%	419,202	846	420,048	0	0.0%
Village	Romeo	504,624	(59,573)	-10.6%	493,519	11,105	504,624	0	0.0%
Manistee County		521,616	(27,320)	-5.0%	507,030	14,586	521,616	0	0.0%
Township	Arcadia	47,823	(376)	-0.8%	49,337	0	49,337	1,514	3.2%
Township	Bear Lake	95,544	(54)	-0.1%	99,069	0	99,069	3,525	3.7%
Township	Brown	54,127	486	0.9%	56,341	0	56,341	2,214	4.1%
Township	Cleon	53,655	38	0.1%	55,492	0	55,492	1,837	3.4%
Township	Dickson	72,113	(158)	-0.2%	74,702	0	74,702	2,589	3.6%
Township	Filer	169,205	(631)	-0.4%	175,156	0	175,156	5,951	3.5%
Township	Manistee	228,775	269	0.1%	236,806	0	236,806	8,031	3.5%
Township	Maple Grove	63,511	(704)	-1.1%	65,314	0	65,314	1,803	2.8%
Township	Marilla	27,814	(70)	-0.3%	28,766	0	28,766	952	3.4%
Township	Norman	140,359	(1,468)	-1.0%	144,366	0	144,366	4,007	2.9%
Township	Onekama	63,851	(72)	-0.1%	66,172	0	66,172	2,321	3.6%
Township	Pleasanton	60,703	145	0.2%	63,132	0	63,132	2,429	4.0%
Township	Springdale	54,301	104	0.2%	56,473	0	56,473	2,172	4.0%
Township	Stronach	62,133	3	0.0%	64,293	0	64,293	2,160	3.5%
City	Manistee	940,432	(59,133)	-5.9%	908,439	31,993	940,432	0	0.0%
Village	Bear Lake	33,476	(520)	-1.5%	34,413	0	34,413	937	2.8%
Village	Copemish	26,566	1,613	6.5%	27,276	0	27,276	710	2.7%
Village	Eastlake	41,360	(405)	-1.0%	42,578	0	42,578	1,218	2.9%
Village	Kaleva	49,936	3,699	8.0%	52,462	0	52,462	2,526	5.1%

Split Unit: See Grosse Pte Shores in Wayne County

ESTIMATED REVENUE SHARING PAYMENTS TO LOCAL UNITS FOR FY 2001-02 AND 2002-03

Local Unit Type	Name	FY 2001-02			FY 2002-03			Change From FY 2001-02	
		Final Payment	Change From FY 2000-01 Amount	Percent	Estimated Total Payment	Grants to Locals	Estimated Adjusted Payment	Amount	Percent
Village	Onekama	60,016	128	0.2%	60,538	0	60,538	522	0.9%
Marquette County		1,306,584	(72,441)	-5.3%	1,267,921	38,663	1,306,584	0	0.0%
Township	Champion	30,857	(2,715)	-8.1%	31,000	0	31,000	143	0.5%
Township	Chocolay	544,807	(4,739)	-0.9%	557,678	0	557,678	12,871	2.4%
Township	Ely	171,690	1,815	1.1%	178,599	0	178,599	6,909	4.0%
Township	Ewing	13,084	(121)	-0.9%	13,420	0	13,420	336	2.6%
Township	Forsyth	655,251	(192,454)	-22.7%	583,721	71,530	655,251	0	0.0%
Township	Humboldt	40,369	(2,409)	-5.6%	41,252	0	41,252	883	2.2%
Township	Ishpeming	309,856	(302)	-0.1%	316,137	0	316,137	6,281	2.0%
Township	Marquette	285,330	(5,422)	-1.9%	291,184	0	291,184	5,854	2.1%
Township	Michigamme	34,950	(1,000)	-2.8%	35,351	0	35,351	401	1.1%
Township	Negaunee	243,244	(4,917)	-2.0%	245,667	0	245,667	2,423	1.0%
Township	Powell	55,729	(291)	-0.5%	57,546	0	57,546	1,817	3.3%
Township	Republic	100,646	(6,231)	-5.8%	102,369	0	102,369	1,723	1.7%
Township	Richmond	89,655	(1,756)	-1.9%	94,112	0	94,112	4,457	5.0%
Township	Sands	200,449	(32,634)	-14.0%	203,991	0	203,991	3,542	1.8%
Township	Skandia	83,572	(443)	-0.5%	86,302	0	86,302	2,730	3.3%
Township	Tilden	83,626	260	0.3%	87,002	0	87,002	3,376	4.0%
Township	Turin	10,676	(1,469)	-12.1%	11,026	0	11,026	350	3.3%
Township	Wells	23,827	(344)	-1.4%	24,405	0	24,405	578	2.4%
Township	West Branch	147,162	(24,711)	-14.4%	152,799	0	152,799	5,637	3.8%
City	Ishpeming	1,183,284	(48,109)	-3.9%	1,181,503	1,781	1,183,284	0	0.0%
City	Marquette	2,467,456	(86,966)	-3.4%	2,505,316	0	2,505,316	37,860	1.5%
City	Negaunee	684,655	8,355	1.2%	692,729	0	692,729	8,074	1.2%
Mason County		583,630	(31,838)	-5.2%	566,796	16,834	583,630	0	0.0%
Township	Amber	155,233	(114)	-0.1%	160,574	0	160,574	5,341	3.4%
Township	Branch	89,881	(261)	-0.3%	93,222	0	93,222	3,341	3.7%
Township	Custer	76,645	(167)	-0.2%	79,465	0	79,465	2,820	3.7%
Township	Eden	42,377	(83)	-0.2%	43,937	0	43,937	1,560	3.7%
Township	Freesoil	53,825	(247)	-0.5%	55,775	0	55,775	1,950	3.6%
Township	Grant	64,224	42	0.1%	66,580	0	66,580	2,356	3.7%
Township	Hamlin	234,710	684	0.3%	244,148	0	244,148	9,438	4.0%
Township	Logan	24,645	(18)	-0.1%	25,551	0	25,551	906	3.7%
Township	Meade	12,158	(56)	-0.5%	12,559	0	12,559	401	3.3%

ESTIMATED REVENUE SHARING PAYMENTS TO LOCAL UNITS FOR FY 2001-02 AND 2002-03

Local Unit Type	Name	FY 2001-02			FY 2002-03			Change From FY 2001-02	
		Final Payment	Change From FY 2000-01 Amount	Percent	Estimated Total Payment	Grants to Locals	Estimated Adjusted Payment	Amount	Percent
Township	Pere Marquette	170,372	(1,055)	-0.6%	175,729	0	175,729	5,357	3.1%
Township	Riverton	106,143	260	0.2%	110,314	0	110,314	4,171	3.9%
Township	Sheridan	73,397	(15)	0.0%	76,246	0	76,246	2,849	3.9%
Township	Sherman	71,646	(177)	-0.2%	74,345	0	74,345	2,699	3.8%
Township	Summit	74,288	122	0.2%	77,172	0	77,172	2,884	3.9%
Township	Victory	113,986	281	0.2%	118,727	0	118,727	4,741	4.2%
City	Ludington	1,006,184	(44,732)	-4.3%	1,011,021	0	1,011,021	4,837	0.5%
City	Scottville	194,885	(8,051)	-4.0%	195,033	0	195,033	148	0.1%
Village	Custer	27,440	509	1.9%	28,457	0	28,457	1,017	3.7%
Village	Fountain	16,129	1,147	7.7%	16,726	0	16,726	597	3.7%
Village	Freesoil	16,879	577	3.5%	17,616	0	17,616	737	4.4%
Mecosta County		847,176	(45,764)	-5.1%	823,205	23,972	847,176	0	0.0%
Township	Aetna	135,132	849	0.6%	140,889	0	140,889	5,757	4.3%
Township	Austin	105,763	347	0.3%	110,031	0	110,031	4,268	4.0%
Township	Big Rapids	261,124	(771)	-0.3%	268,904	0	268,904	7,780	3.0%
Township	Chippewa	97,516	(388)	-0.4%	100,905	0	100,905	3,389	3.5%
Township	Colfax	152,895	108	0.1%	158,918	0	158,918	6,023	3.9%
Township	Deerfield	113,363	1,065	0.9%	117,777	0	117,777	4,414	3.9%
Township	Fork	105,285	1,005	1.0%	108,302	0	108,302	3,017	2.9%
Township	Grant	52,215	263	0.5%	54,249	0	54,249	2,034	3.9%
Township	Green	253,387	801	0.3%	264,463	0	264,463	11,076	4.4%
Township	Hinton	81,490	119	0.1%	84,727	0	84,727	3,237	4.0%
Township	Martiny	119,851	447	0.4%	124,919	0	124,919	5,068	4.2%
Township	Mecosta	178,419	278	0.2%	185,043	0	185,043	6,624	3.7%
Township	Millbrook	91,241	(658)	-0.7%	94,227	0	94,227	2,986	3.3%
Township	Morton	230,207	484	0.2%	239,144	0	239,144	8,937	3.9%
Township	Sheridan	105,380	248	0.2%	109,837	0	109,837	4,457	4.2%
Township	Wheatland	125,062	2,960	2.4%	129,613	0	129,613	4,551	3.6%
City	Big Rapids	1,714,207	(61,311)	-3.5%	1,728,356	0	1,728,356	14,149	0.8%
Village	Barryton	41,551	(495)	-1.2%	42,723	0	42,723	1,172	2.8%
Village	Mecosta	44,375	470	1.1%	45,569	0	45,569	1,194	2.7%
Village	Morley	56,567	(903)	-1.6%	57,978	0	57,978	1,411	2.5%
Village	Stanwood	23,770	(279)	-1.2%	24,314	0	24,314	544	2.3%
Menominee County		529,779	(28,625)	-5.1%	514,524	15,255	529,779	0	0.0%

ESTIMATED REVENUE SHARING PAYMENTS TO LOCAL UNITS FOR FY 2001-02 AND 2002-03

Local Unit Type	Name	FY 2001-02			FY 2002-03			Change From FY 2001-02	
		Final Payment	Change From FY 2000-01 Amount	Percent	Estimated Total Payment	Grants to Locals	Estimated Adjusted Payment	Amount	Percent
Township	Cedarville	20,141	54	0.3%	20,968	0	20,968	827	4.1%
Township	Daggett	39,218	(596)	-1.5%	40,275	0	40,275	1,057	2.7%
Township	Faithorn	16,571	(47)	-0.3%	17,156	0	17,156	585	3.5%
Township	Gourley	35,045	(96)	-0.3%	36,254	0	36,254	1,209	3.5%
Township	Harris	161,995	142	0.1%	167,884	0	167,884	5,889	3.6%
Township	Holmes	22,119	(19)	-0.1%	22,922	0	22,922	803	3.6%
Township	Ingallston	79,732	(46)	-0.1%	82,714	0	82,714	2,982	3.7%
Township	Lake	43,883	(308)	-0.7%	45,590	0	45,590	1,707	3.9%
Township	Mellen	100,632	3,903	4.0%	104,730	0	104,730	4,098	4.1%
Township	Menominee	315,893	1,458	0.5%	326,027	0	326,027	10,134	3.2%
Township	Meyer	90,414	(146)	-0.2%	93,527	0	93,527	3,113	3.4%
Township	Nadeau	75,401	(142)	-0.2%	78,095	0	78,095	2,694	3.6%
Township	Spalding	108,970	1,292	1.2%	113,128	0	113,128	4,158	3.8%
Township	Stephenson	56,995	208	0.4%	59,193	0	59,193	2,198	3.9%
City	Menominee	1,393,531	(46,420)	-3.2%	1,395,476	0	1,395,476	1,945	0.1%
City	Stephenson	85,845	542	0.6%	88,995	0	88,995	3,150	3.7%
Village	Carney	15,645	98	0.6%	16,321	0	16,321	676	4.3%
Village	Daggett	24,214	1,794	8.0%	25,532	0	25,532	1,318	5.4%
Village	Powers	43,229	2,602	6.4%	44,952	0	44,952	1,723	4.0%
Midland County		1,928,842	(93,680)	-4.6%	1,878,968	49,873	1,928,842	0	0.0%
Township	Edenville	195,860	(462)	-0.2%	203,240	0	203,240	7,380	3.8%
Township	Geneva	93,153	5,675	6.5%	96,723	0	96,723	3,570	3.8%
Township	Greendale	143,847	150	0.1%	149,585	0	149,585	5,738	4.0%
Township	Homer	318,473	(2,878)	-0.9%	332,105	0	332,105	13,632	4.3%
Township	Hope	101,619	(535)	-0.5%	105,218	0	105,218	3,599	3.5%
Township	Ingersoll	234,549	8,275	3.7%	244,228	0	244,228	9,679	4.1%
Township	Jasper	91,764	124	0.1%	95,322	0	95,322	3,558	3.9%
Township	Jerome	309,355	(1,893)	-0.6%	320,646	0	320,646	11,291	3.7%
Township	Larkin	331,681	1,058	0.3%	344,904	0	344,904	13,223	4.0%
Township	Lee	373,614	27,675	8.0%	396,756	0	396,756	23,142	6.2%
Township	Lincoln	181,148	(845)	-0.5%	188,044	0	188,044	6,896	3.8%
Township	Midland	187,819	(3,962)	-2.1%	195,633	0	195,633	7,814	4.2%
Township	Mills	155,865	(317)	-0.2%	160,894	0	160,894	5,029	3.2%
Township	Mt Haley	129,823	32	0.0%	134,991	0	134,991	5,168	4.0%
Township	Porter	99,488	385	0.4%	103,708	0	103,708	4,220	4.2%

ESTIMATED REVENUE SHARING PAYMENTS TO LOCAL UNITS FOR FY 2001-02 AND 2002-03

Local Unit		FY 2001-02			FY 2002-03			Change From FY 2001-02		
		Type	Name	Final Payment	Change From FY 2000-01		Estimated Total Payment	Grants to Locals	Estimated Adjusted Payment	Amount
Amount	Percent									
Township	Warren		167,075	382	0.2%	173,375	0	173,375	6,300	3.8%
City	Coleman		192,790	14,281	8.0%	198,957	0	198,957	6,167	3.2%
City	Midland		4,213,621	(119,514)	-2.8%	4,262,937	0	4,262,937	49,316	1.2%
Village	Sanford		75,104	1,031	1.4%	77,913	0	77,913	2,809	3.7%
Missaukee County			284,546	(16,360)	-5.4%	275,833	8,713	284,546	0	0.0%
Township	Aetna		38,222	(178)	-0.5%	39,575	0	39,575	1,353	3.5%
Township	Bloomfield		36,844	(191)	-0.5%	38,133	0	38,133	1,289	3.5%
Township	Butterfield		43,650	(177)	-0.4%	45,090	0	45,090	1,440	3.3%
Township	Caldwell		108,309	200	0.2%	113,069	0	113,069	4,760	4.4%
Township	Clam Union		71,036	30	0.0%	73,616	0	73,616	2,580	3.6%
Township	Enterprise		14,867	(51)	-0.3%	15,373	0	15,373	506	3.4%
Township	Forest		86,765	564	0.7%	90,070	0	90,070	3,305	3.8%
Township	Holland		16,560	62	0.4%	17,245	0	17,245	685	4.1%
Township	Lake		185,218	170	0.1%	192,422	0	192,422	7,204	3.9%
Township	Norwich		49,172	205	0.4%	51,041	0	51,041	1,869	3.8%
Township	Pioneer		36,623	(42)	-0.1%	37,949	0	37,949	1,326	3.6%
Township	Reeder		86,748	101	0.1%	90,376	0	90,376	3,628	4.2%
Township	Richland		113,969	128	0.1%	118,449	0	118,449	4,480	3.9%
Township	Riverside		87,215	(219)	-0.3%	90,064	0	90,064	2,849	3.3%
Township	West Branch		41,561	116	0.3%	43,040	0	43,040	1,479	3.6%
City	Lake City		95,628	(2,634)	-2.7%	97,872	0	97,872	2,244	2.3%
City	Mcbain		61,335	(10,614)	-14.8%	61,867	0	61,867	532	0.9%
Monroe County			3,000,381	(164,859)	-5.2%	2,912,935	87,446	3,000,381	0	0.0%
Township	Ash		383,710	(321)	-0.1%	397,274	0	397,274	13,564	3.5%
Township	Bedford		2,335,322	(2,595)	-0.1%	2,425,638	0	2,425,638	90,316	3.9%
Township	Berlin		397,180	(1,094)	-0.3%	410,836	0	410,836	13,656	3.4%
Township	Dundee		213,705	(985)	-0.5%	220,480	0	220,480	6,775	3.2%
Township	Erie		391,187	10,249	2.7%	406,447	0	406,447	15,260	3.9%
Township	Exeter		240,909	998	0.4%	250,487	0	250,487	9,578	4.0%
Township	Frenchtown		1,823,293	(24,078)	-1.3%	1,871,487	0	1,871,487	48,194	2.6%
Township	Ida		381,110	5,234	1.4%	395,729	0	395,729	14,619	3.8%
Township	Lasalle		401,150	(2,164)	-0.5%	414,026	0	414,026	12,876	3.2%
Township	London		235,778	(614)	-0.3%	244,248	0	244,248	8,470	3.6%
Township	Milan		131,657	(495)	-0.4%	135,964	0	135,964	4,307	3.3%

ESTIMATED REVENUE SHARING PAYMENTS TO LOCAL UNITS FOR FY 2001-02 AND 2002-03

Local Unit Type	Name	FY 2001-02			FY 2002-03			Change From FY 2001-02	
		Final Payment	Change From FY 2000-01 Amount	Percent	Estimated Total Payment	Grants to Locals	Estimated Adjusted Payment	Amount	Percent
Township	Monroe	1,164,737	(16,841)	-1.4%	1,193,466	0	1,193,466	28,729	2.5%
Township	Raisinville	365,079	1,273	0.4%	380,243	0	380,243	15,164	4.2%
Township	Summerfield	260,722	(2,258)	-0.9%	268,956	0	268,956	8,234	3.2%
Township	Whiteford	346,439	(1,684)	-0.5%	357,819	0	357,819	11,380	3.3%
City	Luna Pier	154,682	(10,555)	-6.4%	155,076	0	155,076	394	0.3%
City	Milan								
									<i>Split Unit: See Milan in Washtenaw County</i>
City	Monroe	2,579,206	(201,029)	-7.2%	2,573,098	6,108	2,579,206	0	0.0%
City	Petersburg	178,601	(7,530)	-4.0%	178,589	12	178,601	0	0.0%
Village	Carleton	287,274	(6,101)	-2.1%	292,443	0	292,443	5,169	1.8%
Village	Dundee	363,127	(28,749)	-7.3%	348,659	14,468	363,127	0	0.0%
Village	Estral Beach	43,872	(128)	-0.3%	45,160	0	45,160	1,288	2.9%
Village	Maybee	51,027	(1,053)	-2.0%	51,369	0	51,369	342	0.7%
Village	South Rockwood	133,246	(2,599)	-1.9%	133,804	0	133,804	558	0.4%
Montcalm County		1,275,223	(68,016)	-5.1%	1,238,888	36,336	1,275,223	0	0.0%
Township	Belvidere	212,393	(4,157)	-1.9%	217,169	0	217,169	4,776	2.2%
Township	Bloomer	212,275	1,200	0.6%	222,012	0	222,012	9,737	4.6%
Township	Bushnell	118,266	832	0.7%	123,373	0	123,373	5,107	4.3%
Township	Cato	137,392	118	0.1%	142,702	0	142,702	5,310	3.9%
Township	Crystal	226,861	(507)	-0.2%	234,665	0	234,665	7,804	3.4%
Township	Day	87,302	2,171	2.6%	89,808	0	89,808	2,506	2.9%
Township	Douglass	181,561	1,005	0.6%	189,393	0	189,393	7,832	4.3%
Township	Eureka	252,816	262	0.1%	262,325	0	262,325	9,509	3.8%
Township	Evergreen	184,753	1,039	0.6%	192,484	0	192,484	7,731	4.2%
Township	Fairplains	144,841	110	0.1%	151,879	0	151,879	7,038	4.9%
Township	Ferris	112,154	53	0.0%	116,625	0	116,625	4,471	4.0%
Township	Home	118,284	(1,457)	-1.2%	121,807	0	121,807	3,523	3.0%
Township	Maple Valley	168,982	948	0.6%	175,613	0	175,613	6,631	3.9%
Township	Montcalm	259,204	(12)	0.0%	267,623	0	267,623	8,419	3.2%
Township	Pierson	196,834	897	0.5%	205,059	0	205,059	8,225	4.2%
Township	Pine	127,015	327	0.3%	132,187	0	132,187	5,172	4.1%
Township	Reynolds	201,799	547	0.3%	209,656	0	209,656	7,857	3.9%
Township	Richland	235,553	316	0.1%	245,436	0	245,436	9,883	4.2%
Township	Sidney	183,965	779	0.4%	191,536	0	191,536	7,571	4.1%
Township	Winfield	154,897	449	0.3%	160,221	0	160,221	5,324	3.4%
City	Carson City	165,722	(477)	-0.3%	165,480	242	165,722	0	0.0%

ESTIMATED REVENUE SHARING PAYMENTS TO LOCAL UNITS FOR FY 2001-02 AND 2002-03

Local Unit Type	Name	FY 2001-02			FY 2002-03			Change From FY 2001-02	
		Final Payment	Change From FY 2000-01		Estimated Total Payment	Grants to Locals	Estimated Adjusted Payment	Amount	Percent
			Amount	Percent					
City	Greenville	933,276	(41,272)	-4.2%	933,687	0	933,687	411	0.0%
City	Stanton	192,133	1,665	0.9%	192,902	0	192,902	769	0.4%
Village	Edmore	145,398	(5,014)	-3.3%	147,660	0	147,660	2,262	1.6%
Village	Howard City	163,587	(2,139)	-1.3%	165,125	0	165,125	1,538	0.9%
Village	Lakeview	146,636	(5,974)	-3.9%	147,555	0	147,555	919	0.6%
Village	Mcbride	21,526	380	1.8%	22,245	0	22,245	719	3.3%
Village	Pierson	22,918	212	0.9%	23,118	0	23,118	200	0.9%
Village	Sheridan	80,482	(2,068)	-2.5%	82,548	0	82,548	2,066	2.6%
Montmorency County		203,131	(11,595)	-5.4%	197,253	5,879	203,131	0	0.0%
Township	Albert	206,981	(524)	-0.3%	214,151	0	214,151	7,170	3.5%
Township	Avery	55,088	135	0.2%	57,141	0	57,141	2,053	3.7%
Township	Briley	168,446	(1,484)	-0.9%	174,381	0	174,381	5,935	3.5%
Township	Hillman	119,734	188	0.2%	124,328	0	124,328	4,594	3.8%
Township	Loud	21,287	9	0.0%	22,089	0	22,089	802	3.8%
Township	Montmorency	88,986	122	0.1%	92,446	0	92,446	3,460	3.9%
Township	Rust	40,542	203	0.5%	42,180	0	42,180	1,638	4.0%
Township	Vienna	43,769	(76)	-0.2%	45,320	0	45,320	1,551	3.5%
Village	Hillman	70,763	(1,489)	-2.1%	72,070	0	72,070	1,307	1.8%
Muskegon County		3,686,641	(190,332)	-4.9%	3,585,161	101,481	3,686,641	0	0.0%
Township	Blue Lake	161,156	(3,248)	-2.0%	165,662	0	165,662	4,506	2.8%
Township	Casnovia	201,673	(511)	-0.3%	209,224	0	209,224	7,551	3.7%
Township	Cedar Creek	247,080	17,251	7.5%	256,483	0	256,483	9,403	3.8%
Township	Dalton	597,408	(8,574)	-1.4%	613,094	0	613,094	15,686	2.6%
Township	Egelston	893,578	(22,440)	-2.5%	916,030	0	916,030	22,452	2.5%
Township	Fruitland	400,795	(538)	-0.1%	415,611	0	415,611	14,816	3.7%
Township	Fruitport	927,207	10,088	1.1%	950,630	0	950,630	23,423	2.5%
Township	Holton	223,581	16,562	8.0%	231,253	0	231,253	7,672	3.4%
Township	Laketon	576,174	(797)	-0.1%	599,023	0	599,023	22,849	4.0%
Township	Montague	125,629	272	0.2%	130,492	0	130,492	4,863	3.9%
Township	Moorland	140,080	3,002	2.2%	143,631	0	143,631	3,551	2.5%
Township	Muskegon	1,902,922	(18,342)	-1.0%	1,940,898	0	1,940,898	37,976	2.0%
Township	Ravenna	123,070	(69)	-0.1%	127,981	0	127,981	4,911	4.0%
Township	Sullivan	192,947	677	0.4%	201,097	0	201,097	8,150	4.2%
Township	Whitehall	129,356	(713)	-0.5%	133,028	0	133,028	3,672	2.8%

ESTIMATED REVENUE SHARING PAYMENTS TO LOCAL UNITS FOR FY 2001-02 AND 2002-03

Local Unit Type	Name	FY 2001-02			FY 2002-03			Change From FY 2001-02	
		Final Payment	Change From FY 2000-01 Amount	Percent	Estimated Total Payment	Grants to Locals	Estimated Adjusted Payment	Amount	Percent
Township	White River	98,780	213	0.2%	102,691	0	102,691	3,911	4.0%
City	Montague	277,649	(21,232)	-7.1%	270,310	7,339	277,649	0	0.0%
City	Muskegon	5,507,125	(152,212)	-2.7%	5,509,033	0	5,509,033	1,908	0.0%
City	Muskegon Heights	2,139,063	(63,485)	-2.9%	2,143,639	0	2,143,639	4,576	0.2%
City	North Muskegon	405,531	(12,446)	-3.0%	409,081	0	409,081	3,550	0.9%
City	Norton Shores	2,115,489	(38,848)	-1.8%	2,158,212	0	2,158,212	42,723	2.0%
City	Roosevelt Park	413,783	(15,847)	-3.7%	411,459	2,324	413,783	0	0.0%
City	Whitehall	375,013	(48,592)	-11.5%	369,162	5,851	375,013	0	0.0%
Village	Casnovia							<i>Split Unit: See Casnovia in Kent County</i>	
Village	Fruitport	111,024	(2,402)	-2.1%	113,266	0	113,266	2,242	2.0%
Village	Lakewood Club	105,097	(2,138)	-2.0%	106,041	0	106,041	944	0.9%
Village	Ravenna	115,141	(3,493)	-2.9%	118,687	0	118,687	3,546	3.1%
Newaygo County		969,468	(54,042)	-5.3%	940,658	28,809	969,468	0	0.0%
Township	Ashland	226,878	(2,013)	-0.9%	233,243	0	233,243	6,365	2.8%
Township	Barton	70,572	(103)	-0.1%	72,556	0	72,556	1,984	2.8%
Township	Beaver	49,449	(2)	0.0%	51,699	0	51,699	2,250	4.5%
Township	Big Prairie	189,904	2,557	1.4%	198,234	0	198,234	8,330	4.4%
Township	Bridgeton	180,620	(1,532)	-0.8%	187,224	0	187,224	6,604	3.7%
Township	Brooks	276,407	1,385	0.5%	289,926	0	289,926	13,519	4.9%
Township	Croton	233,096	103	0.0%	242,344	0	242,344	9,248	4.0%
Township	Dayton	155,399	457	0.3%	161,814	0	161,814	6,415	4.1%
Township	Denver	131,816	(48)	0.0%	138,159	0	138,159	6,343	4.8%
Township	Ensley	206,450	(327)	-0.2%	213,246	0	213,246	6,796	3.3%
Township	Everett	175,217	6,449	3.8%	182,080	0	182,080	6,863	3.9%
Township	Garfield	204,220	(950)	-0.5%	211,270	0	211,270	7,050	3.5%
Township	Goodwell	44,293	(263)	-0.6%	45,677	0	45,677	1,384	3.1%
Township	Grant	277,943	381	0.1%	287,747	0	287,747	9,804	3.5%
Township	Home	20,588	(109)	-0.5%	21,281	0	21,281	693	3.4%
Township	Lilley	65,865	(1,120)	-1.7%	67,430	0	67,430	1,565	2.4%
Township	Lincoln	113,445	(271)	-0.2%	117,241	0	117,241	3,796	3.3%
Township	Merrill	51,141	(1,198)	-2.3%	52,265	0	52,265	1,124	2.2%
Township	Monroe	26,377	(130)	-0.5%	27,203	0	27,203	826	3.1%
Township	Norwich	48,367	(573)	-1.2%	49,619	0	49,619	1,252	2.6%
Township	Sheridan	186,772	5,742	3.2%	194,754	0	194,754	7,982	4.3%
Township	Sherman	170,156	751	0.4%	177,188	0	177,188	7,032	4.1%

ESTIMATED REVENUE SHARING PAYMENTS TO LOCAL UNITS FOR FY 2001-02 AND 2002-03

Local Unit		FY 2001-02			FY 2002-03			Change From FY 2001-02	
		Final Payment	Change From FY 2000-01 Amount	Percent	Estimated Total Payment	Grants to Locals	Estimated Adjusted Payment	Amount	Percent
Township	Troy	18,195	29	0.2%	18,912	0	18,912	717	3.9%
Township	Wilcox	97,594	(97)	-0.1%	100,866	0	100,866	3,272	3.4%
City	Fremont	505,540	(24,528)	-4.6%	501,981	3,559	505,540	0	0.0%
City	Grant	120,964	(4,157)	-3.3%	122,536	0	122,536	1,572	1.3%
City	Newaygo	202,434	(13,774)	-6.4%	202,200	234	202,434	0	0.0%
City	White Cloud	186,411	(2,576)	-1.4%	190,009	0	190,009	3,598	1.9%
Village	Hesperia								
<i>Split Unit: See Hesperia in Oceana County</i>									
Oakland County		24,670,943	(1,349,713)	-5.2%	23,951,272	719,670	24,670,943	0	0.0%
Township	Addison	506,334	(6,845)	-1.3%	518,967	0	518,967	12,633	2.5%
Township	Bloomfield	3,933,881	(68,086)	-1.7%	4,019,528	0	4,019,528	85,647	2.2%
Township	Brandon	1,167,915	(23,502)	-2.0%	1,190,447	0	1,190,447	22,532	1.9%
Township	Commerce	2,449,187	(4,039)	-0.2%	2,537,930	0	2,537,930	88,743	3.6%
Township	Groveland	487,823	(3,118)	-0.6%	503,654	0	503,654	15,831	3.2%
Township	Highland	1,615,080	(22,834)	-1.4%	1,654,560	0	1,654,560	39,480	2.4%
Township	Holly	295,559	(1,073)	-0.4%	305,355	0	305,355	9,796	3.3%
Township	Independence	2,862,498	(37,757)	-1.3%	2,938,871	0	2,938,871	76,373	2.7%
Township	Lyon	875,877	(8,904)	-1.0%	900,937	0	900,937	25,060	2.9%
Township	Milford	678,308	(2,458)	-0.4%	701,445	0	701,445	23,137	3.4%
Township	Novi	15,560	(147)	-0.9%	16,013	0	16,013	453	2.9%
Township	Oakland	1,020,227	(1,527)	-0.1%	1,058,342	0	1,058,342	38,115	3.7%
Township	Orion	2,577,608	(19,179)	-0.7%	2,660,448	0	2,660,448	82,840	3.2%
Township	Oxford	1,103,481	(25,396)	-2.3%	1,121,420	0	1,121,420	17,939	1.6%
Township	Rose	472,231	38	0.0%	490,039	0	490,039	17,808	3.8%
Township	Royal Oak	812,235	43,054	5.6%	823,269	0	823,269	11,034	1.4%
Township	Southfield	2,160	(43)	-2.0%	2,200	0	2,200	40	1.9%
Township	Springfield	1,053,546	(6,236)	-0.6%	1,087,292	0	1,087,292	33,746	3.2%
Township	Waterford	7,199,843	(130,969)	-1.8%	7,324,835	0	7,324,835	124,992	1.7%
Township	West Bloomfield	5,783,445	(75,367)	-1.3%	5,933,923	0	5,933,923	150,478	2.6%
Township	White Lake	2,434,477	(22,345)	-0.9%	2,507,293	0	2,507,293	72,816	3.0%
City	Auburn Hills	1,910,549	(57,569)	-2.9%	1,928,839	0	1,928,839	18,290	1.0%
City	Berkley	1,753,856	(147,100)	-7.7%	1,762,267	0	1,762,267	8,411	0.5%
City	Birmingham	2,144,743	(183,505)	-7.9%	2,138,817	5,926	2,144,743	0	0.0%
City	Bloomfield Hills	338,290	(30,865)	-8.4%	345,222	0	345,222	6,932	2.0%
City	Clarkston	98,079	(7,157)	-6.8%	98,667	0	98,667	588	0.6%
City	Clawson	1,435,996	(120,354)	-7.7%	1,445,528	0	1,445,528	9,532	0.7%

ESTIMATED REVENUE SHARING PAYMENTS TO LOCAL UNITS FOR FY 2001-02 AND 2002-03

Local Unit		FY 2001-02			FY 2002-03			Change From FY 2001-02	
		Final Payment	Change From FY 2000-01 Amount	Percent	Estimated Total Payment	Grants to Locals	Estimated Adjusted Payment	Amount	Percent
Type	Name								
City	Farmington	1,164,233	(47,764)	-3.9%	1,164,407	0	1,164,407	174	0.0%
City	Farmington Hills	8,118,108	(183,796)	-2.2%	8,257,959	0	8,257,959	139,851	1.7%
City	Ferndale	3,919,181	(460,286)	-10.5%	3,819,578	99,603	3,919,181	0	0.0%
City	Hazel Park	3,058,776	(128,321)	-4.0%	3,058,381	395	3,058,776	0	0.0%
City	Huntington Woods	707,730	(65,236)	-8.4%	704,216	3,514	707,730	0	0.0%
City	Keego Harbor	301,080	(23,640)	-7.3%	300,277	803	301,080	0	0.0%
City	Lake Angelus	30,457	(1,490)	-4.7%	30,798	0	30,798	341	1.1%
City	Lathrup Village	477,326	(37,559)	-7.3%	475,606	1,720	477,326	0	0.0%
City	Madison Heights	3,848,919	(315,732)	-7.6%	3,817,582	31,337	3,848,919	0	0.0%
City	Northville	720,381	(31,401)	-4.2%	718,585	1,796	720,381	0	0.0%
City	Novi	4,370,387	(77,870)	-1.8%	4,464,677	0	4,464,677	94,290	2.2%
City	Oak Park	4,746,910	(262,970)	-5.2%	4,716,163	30,747	4,746,910	0	0.0%
City	Orchard Lake Village	210,970	(14,954)	-6.6%	212,910	0	212,910	1,940	0.9%
City	Pleasant Ridge	329,396	(45,413)	-12.1%	324,676	4,720	329,396	0	0.0%
City	Pontiac	15,435,950	(1,581,772)	-9.3%	14,886,733	549,217	15,435,950	0	0.0%
City	Rochester	1,026,330	(32,536)	-3.1%	1,036,308	0	1,036,308	9,978	1.0%
City	Rochester Hills	6,385,263	(109,504)	-1.7%	6,528,714	0	6,528,714	143,451	2.2%
City	Royal Oak	6,775,539	(515,260)	-7.1%	6,795,476	0	6,795,476	19,937	0.3%
City	Southfield	8,990,276	(372,573)	-4.0%	8,988,061	2,215	8,990,276	0	0.0%
City	South Lyon	1,011,268	(48,580)	-4.6%	1,020,151	0	1,020,151	8,883	0.9%
City	Sylvan Lake	177,330	(20,611)	-10.4%	178,133	0	178,133	803	0.5%
City	Troy	8,079,862	(202,398)	-2.4%	8,199,735	0	8,199,735	119,873	1.5%
City	Walled Lake	746,483	(31,444)	-4.0%	747,310	0	747,310	827	0.1%
City	Wixom	1,329,660	(42,473)	-3.1%	1,339,443	0	1,339,443	9,783	0.7%
Village	Beverly Hills	1,010,598	(50,266)	-4.7%	1,020,418	0	1,020,418	9,820	1.0%
Village	Bingham Farms	86,490	(1,586)	-1.8%	88,251	0	88,251	1,761	2.0%
Village	Franklin	248,530	(4,579)	-1.8%	253,746	0	253,746	5,216	2.1%
Village	Holly	747,211	14,059	1.9%	754,255	0	754,255	7,044	0.9%
Village	Lake Orion	281,224	(38,706)	-12.1%	281,691	0	281,691	467	0.2%
Village	Leonard	28,538	(1,923)	-6.3%	29,226	0	29,226	688	2.4%
Village	Milford	652,522	(24,734)	-3.7%	654,194	0	654,194	1,672	0.3%
Village	Ortonville	137,797	(1,927)	-1.4%	141,005	0	141,005	3,208	2.3%
Village	Oxford	304,017	(5,201)	-1.7%	311,253	0	311,253	7,236	2.4%
Village	Wolverine Lake	413,710	(30,732)	-6.9%	419,534	0	419,534	5,824	1.4%
Oceana County		523,510	(30,368)	-5.5%	507,315	16,195	523,510	0	0.0%

ESTIMATED REVENUE SHARING PAYMENTS TO LOCAL UNITS FOR FY 2001-02 AND 2002-03

Local Unit Type	Name	FY 2001-02			FY 2002-03			Change From FY 2001-02	
		Final Payment	Change From FY 2000-01 Amount	Percent	Estimated Total Payment	Grants to Locals	Estimated Adjusted Payment	Amount	Percent
Township	Benona	111,371	164	0.1%	115,745	0	115,745	4,374	3.9%
Township	Claybanks	61,316	142	0.2%	63,810	0	63,810	2,494	4.1%
Township	Colfax	43,718	3	0.0%	45,345	0	45,345	1,627	3.7%
Township	Crystal	69,565	275	0.4%	72,406	0	72,406	2,841	4.1%
Township	Elbridge	104,618	292	0.3%	111,053	0	111,053	6,435	6.2%
Township	Ferry	107,269	(133)	-0.1%	111,365	0	111,365	4,096	3.8%
Township	Golden	135,616	(179)	-0.1%	140,539	0	140,539	4,923	3.6%
Township	Grant	195,683	(1,086)	-0.6%	205,111	0	205,111	9,428	4.8%
Township	Greenwood	94,324	263	0.3%	98,866	0	98,866	4,542	4.8%
Township	Hart	161,179	61	0.0%	165,093	0	165,093	3,914	2.4%
Township	Leavitt	47,586	970	2.1%	49,581	0	49,581	1,995	4.2%
Township	Newfield	150,429	(121)	-0.1%	156,845	0	156,845	6,416	4.3%
Township	Otto	53,459	(775)	-1.4%	55,182	0	55,182	1,723	3.2%
Township	Pentwater	40,660	(71)	-0.2%	42,110	0	42,110	1,450	3.6%
Township	Shelby	129,866	(890)	-0.7%	133,703	0	133,703	3,837	3.0%
Township	Weare	103,780	(306)	-0.3%	107,824	0	107,824	4,044	3.9%
City	Hart	241,300	(8,262)	-3.3%	233,977	7,323	241,300	0	0.0%
Village	Hesperia	121,249	8,981	8.0%	123,870	0	123,870	2,621	2.2%
Village	New Era	45,686	(2,296)	-4.8%	47,016	0	47,016	1,330	2.9%
Village	Pentwater	94,461	(11,813)	-11.1%	94,972	0	94,972	511	0.5%
Village	Rothbury	37,199	(967)	-2.5%	39,245	0	39,245	2,046	5.5%
Village	Shelby	257,651	18,464	7.7%	258,260	0	258,260	609	0.2%
Village	Walkerville	32,058	2,356	7.9%	32,803	0	32,803	745	2.3%
Ogemaw County		434,575	(24,452)	-5.3%	421,564	13,011	434,575	0	0.0%
Township	Churchill	121,256	58	0.0%	125,893	0	125,893	4,637	3.8%
Township	Cumming	67,986	(862)	-1.3%	69,746	0	69,746	1,760	2.6%
Township	Edwards	112,842	(308)	-0.3%	116,502	0	116,502	3,660	3.2%
Township	Foster	60,335	254	0.4%	62,808	0	62,808	2,473	4.1%
Township	Goodar	37,004	37	0.1%	38,429	0	38,429	1,425	3.9%
Township	Hill	117,594	154	0.1%	122,154	0	122,154	4,560	3.9%
Township	Horton	75,167	290	0.4%	78,521	0	78,521	3,354	4.5%
Township	Klacking	47,852	(107)	-0.2%	49,747	0	49,747	1,895	4.0%
Township	Logan	42,955	121	0.3%	44,690	0	44,690	1,735	4.0%
Township	Mills	340,655	4,072	1.2%	349,613	0	349,613	8,958	2.6%
Township	Ogemaw	88,175	(1,021)	-1.1%	90,744	0	90,744	2,569	2.9%

ESTIMATED REVENUE SHARING PAYMENTS TO LOCAL UNITS FOR FY 2001-02 AND 2002-03

Local Unit Type	Name	FY 2001-02			FY 2002-03			Change From FY 2001-02	
		Final Payment	Change From FY 2000-01 Amount	Percent	Estimated Total Payment	Grants to Locals	Estimated Adjusted Payment	Amount	Percent
Township	Richland	51,112	(36)	-0.1%	53,034	0	53,034	1,922	3.8%
Township	Rose	115,047	449	0.4%	118,847	0	118,847	3,800	3.3%
Township	West Branch	197,337	1,177	0.6%	205,020	0	205,020	7,683	3.9%
City	Rose City	102,243	2,437	2.4%	103,897	0	103,897	1,654	1.6%
City	West Branch	221,920	(12,534)	-5.3%	224,938	0	224,938	3,018	1.4%
Village	Prescott	28,504	(128)	-0.4%	29,389	0	29,389	885	3.1%
Ontonagon County		173,551	(8,841)	-4.8%	168,804	4,747	173,551	0	0.0%
Township	Bergland	43,728	(4,047)	-8.5%	45,145	0	45,145	1,417	3.2%
Township	Bohemia	6,286	(936)	-13.0%	6,449	0	6,449	163	2.6%
Township	Carp Lake	67,681	(18,396)	-21.4%	70,372	0	70,372	2,691	4.0%
Township	Greenland	71,858	(1,387)	-1.9%	75,229	0	75,229	3,371	4.7%
Township	Haight	17,262	37	0.2%	17,845	0	17,845	583	3.4%
Township	Interior	32,806	(4,864)	-12.9%	33,873	0	33,873	1,067	3.3%
Township	Matchwood	8,557	(211)	-2.4%	8,884	0	8,884	327	3.8%
Township	Mcmillan	55,195	(148)	-0.3%	57,540	0	57,540	2,345	4.2%
Township	Ontonagon	88,179	264	0.3%	91,628	0	91,628	3,449	3.9%
Township	Rockland	26,877	(3,495)	-11.5%	27,568	0	27,568	691	2.6%
Township	Stannard	67,773	151	0.2%	70,501	0	70,501	2,728	4.0%
Village	Ontonagon	213,281	(11,745)	-5.2%	216,914	0	216,914	3,633	1.7%
Osceola County		573,260	(26,203)	-4.4%	559,285	13,975	573,260	0	0.0%
Township	Burdell	81,377	1,420	1.8%	83,779	0	83,779	2,402	3.0%
Township	Cedar	30,086	93	0.3%	31,324	0	31,324	1,238	4.1%
Township	Ewart	114,224	660	0.6%	118,954	0	118,954	4,730	4.1%
Township	Hartwick	46,769	278	0.6%	48,775	0	48,775	2,006	4.3%
Township	Hersey	114,427	(141)	-0.1%	118,359	0	118,359	3,932	3.4%
Township	Highland	94,709	345	0.4%	98,710	0	98,710	4,001	4.2%
Township	Leroy	72,385	997	1.4%	73,722	0	73,722	1,337	1.8%
Township	Lincoln	135,043	(2,238)	-1.6%	139,508	0	139,508	4,465	3.3%
Township	Marion	55,685	121	0.2%	57,865	0	57,865	2,180	3.9%
Township	Middle Branch	66,000	428	0.7%	68,821	0	68,821	2,821	4.3%
Township	Orient	60,116	180	0.3%	62,622	0	62,622	2,506	4.2%
Township	Osceola	87,026	465	0.5%	90,626	0	90,626	3,600	4.1%
Township	Richmond	132,417	(836)	-0.6%	138,345	0	138,345	5,928	4.5%
Township	Rose Lake	95,731	(164)	-0.2%	99,031	0	99,031	3,300	3.4%

ESTIMATED REVENUE SHARING PAYMENTS TO LOCAL UNITS FOR FY 2001-02 AND 2002-03

Local Unit		FY 2001-02			FY 2002-03			Change From FY 2001-02	
		Final Payment	Change From FY 2000-01 Amount	Percent	Estimated Total Payment	Grants to Locals	Estimated Adjusted Payment	Amount	Percent
Type	Name								
Township	Sherman	89,890	857	1.0%	90,920	0	90,920	1,030	1.1%
Township	Sylvan	79,126	303	0.4%	82,507	0	82,507	3,381	4.3%
City	Ewart	203,493	(14,004)	-6.4%	205,375	0	205,375	1,882	0.9%
City	Reed City	321,635	(9,087)	-2.7%	314,481	7,154	321,635	0	0.0%
Village	Hersey	35,061	2,597	8.0%	37,866	0	37,866	2,805	8.0%
Village	Leroy	26,255	1,649	6.7%	26,885	0	26,885	630	2.4%
Village	Marion	131,984	4,781	3.8%	133,211	0	133,211	1,227	0.9%
Village	Tustin	28,300	2,096	8.0%	29,109	0	29,109	809	2.9%
Oscoda County		183,116	(10,652)	-5.5%	177,433	5,683	183,116	0	0.0%
Township	Big Creek	257,501	1,781	0.7%	268,766	0	268,766	11,265	4.4%
Township	Clinton	37,179	103	0.3%	38,690	0	38,690	1,511	4.1%
Township	Comins	157,484	319	0.2%	163,700	0	163,700	6,216	3.9%
Township	Elmer	81,825	421	0.5%	85,320	0	85,320	3,495	4.3%
Township	Greenwood	88,517	21	0.0%	91,917	0	91,917	3,400	3.8%
Township	Mentor	94,014	28	0.0%	97,340	0	97,340	3,326	3.5%

ESTIMATED REVENUE SHARING PAYMENTS TO LOCAL UNITS FOR FY 2001-02 AND 2002-03

Local Unit Type	Name	FY 2001-02			FY 2002-03			Change From FY 2001-02	
		Final Payment	Change From FY 2000-01 Amount	Percent	Estimated Total Payment	Grants to Locals	Estimated Adjusted Payment	Amount	Percent
Otsego County		462,845	(26,330)	-5.4%	448,830	14,015	462,845	0	0.0%
Township	Bagley	423,319	3,053	0.7%	441,880	0	441,880	18,561	4.4%
Township	Charlton	99,263	(115)	-0.1%	102,851	0	102,851	3,588	3.6%
Township	Chester	90,304	537	0.6%	94,223	0	94,223	3,919	4.3%
Township	Corwith	82,405	275	0.3%	85,724	0	85,724	3,319	4.0%
Township	Dover	45,192	35	0.1%	46,961	0	46,961	1,769	3.9%
Township	Elmira	117,635	448	0.4%	122,571	0	122,571	4,936	4.2%
Township	Hayes	172,783	1,372	0.8%	180,411	0	180,411	7,628	4.4%
Township	Livingston	168,869	(1,360)	-0.8%	176,184	0	176,184	7,315	4.3%
Township	Otsego Lake	185,391	627	0.3%	192,841	0	192,841	7,450	4.0%
City	Gaylord	396,393	(16,467)	-4.0%	396,189	204	396,393	0	0.0%
Village	Vanderbilt	66,351	(2,066)	-3.0%	67,117	0	67,117	766	1.2%
Ottawa County		4,803,036	(268,978)	-5.3%	4,661,445	141,591	4,803,036	0	0.0%
Township	Allendale	1,111,521	(1,741)	-0.2%	1,149,983	0	1,149,983	38,462	3.5%
Township	Blendon	446,894	(293)	-0.1%	465,634	0	465,634	18,740	4.2%
Township	Chester	221,905	(5,586)	-2.5%	227,053	0	227,053	5,148	2.3%
Township	Crockery	298,447	633	0.2%	310,122	0	310,122	11,675	3.9%
Township	Georgetown	3,420,262	5,434	0.2%	3,564,154	0	3,564,154	143,892	4.2%
Township	Grand Haven	1,076,127	(11,025)	-1.0%	1,108,082	0	1,108,082	31,955	3.0%
Township	Holland	2,483,312	(20,996)	-0.8%	2,558,311	0	2,558,311	74,999	3.0%
Township	Jamestown	401,453	(7,356)	-1.8%	414,558	0	414,558	13,105	3.3%
Township	Olive	368,921	(2,294)	-0.6%	382,039	0	382,039	13,118	3.6%
Township	Park	1,409,670	(1,756)	-0.1%	1,461,862	0	1,461,862	52,192	3.7%
Township	Polkton	186,004	(846)	-0.5%	191,589	0	191,589	5,585	3.0%
Township	Port Sheldon	323,602	1,071	0.3%	336,541	0	336,541	12,939	4.0%
Township	Robinson	438,110	851	0.2%	453,220	0	453,220	15,110	3.4%
Township	Spring Lake	840,426	(6,220)	-0.7%	866,897	0	866,897	26,471	3.2%
Township	Tallmadge	522,649	14,649	2.9%	543,403	0	543,403	20,754	4.0%
Township	Wright	283,737	(1,172)	-0.4%	291,396	0	291,396	7,659	2.7%
Township	Zeeland	634,828	(12,483)	-1.9%	644,064	0	644,064	9,236	1.5%
City	Coopersville	424,710	(11,485)	-2.6%	422,255	2,455	424,710	0	0.0%
City	Ferrysburg	309,546	(10,649)	-3.3%	311,404	0	311,404	1,858	0.6%
City	Grand Haven	1,274,677	(129,340)	-9.2%	1,277,720	0	1,277,720	3,043	0.2%
City	Holland	3,887,063	(145,967)	-3.6%	3,896,339	0	3,896,339	9,276	0.2%
City	Hudsonville	720,746	(22,232)	-3.0%	724,806	0	724,806	4,060	0.6%

ESTIMATED REVENUE SHARING PAYMENTS TO LOCAL UNITS FOR FY 2001-02 AND 2002-03

Local Unit Type	Name	FY 2001-02			FY 2002-03			Change From FY 2001-02	
		Final Payment	Change From FY 2000-01 Amount	Percent	Estimated Total Payment	Grants to Locals	Estimated Adjusted Payment	Amount	Percent
City	Zeeland	682,097	(32,805)	-4.6%	677,526	4,571	682,097	0	0.0%
Village	Spring Lake	248,364	(12,343)	-4.7%	250,611	0	250,611	2,247	0.9%
Presque Isle County		293,625	(16,289)	-5.3%	284,952	8,673	293,625	0	0.0%
Township	Allis	80,010	38	0.0%	83,336	0	83,336	3,326	4.2%
Township	Bearinger	23,938	15	0.1%	24,844	0	24,844	906	3.8%
Township	Belknap	68,026	757	1.1%	70,630	0	70,630	2,604	3.8%
Township	Bismarck	29,522	130	0.4%	30,733	0	30,733	1,211	4.1%
Township	Case	52,988	(205)	-0.4%	54,698	0	54,698	1,710	3.2%
Township	Krakow	46,593	(63)	-0.1%	48,275	0	48,275	1,682	3.6%
Township	Metz	26,003	(4,140)	-13.7%	26,940	0	26,940	937	3.6%
Township	Moltke	27,448	153	0.6%	28,449	0	28,449	1,001	3.6%
Township	North Allis	46,326	181	0.4%	48,248	0	48,248	1,922	4.1%
Township	Ocqueoc	47,092	28	0.1%	48,877	0	48,877	1,785	3.8%
Township	Posen	53,104	(1,545)	-2.8%	54,965	0	54,965	1,861	3.5%
Township	Presque Isle	122,269	506	0.4%	127,214	0	127,214	4,945	4.0%
Township	Pulawski	30,536	(3,747)	-10.9%	31,435	0	31,435	899	2.9%
Township	Rogers	69,914	318	0.5%	72,743	0	72,743	2,829	4.0%
City	Onaway	154,603	(2,051)	-1.3%	155,461	0	155,461	858	0.6%
City	Rogers City	457,576	(13,950)	-3.0%	453,160	4,416	457,576	0	0.0%
Village	Millersburg	25,809	1,912	8.0%	27,243	0	27,243	1,434	5.6%
Village	Posen	27,252	(38)	-0.1%	28,330	0	28,330	1,078	4.0%
Roscommon County		492,464	(28,715)	-5.5%	477,267	15,197	492,464	0	0.0%
Township	Ausable	21,372	324	1.5%	22,154	0	22,154	782	3.7%
Township	Backus	27,838	(143)	-0.5%	28,730	0	28,730	892	3.2%
Township	Denton	465,675	(3,418)	-0.7%	480,109	0	480,109	14,434	3.1%
Township	Gerrish	235,437	(1,252)	-0.5%	243,131	0	243,131	7,694	3.3%
Township	Higgins	75,561	(897)	-1.2%	77,553	0	77,553	1,992	2.6%
Township	Lake	104,811	(706)	-0.7%	108,062	0	108,062	3,251	3.1%
Township	Lyon	108,994	(179)	-0.2%	112,971	0	112,971	3,977	3.6%
Township	Markey	192,171	(1,516)	-0.8%	198,137	0	198,137	5,966	3.1%
Township	Nester	20,364	(145)	-0.7%	21,006	0	21,006	642	3.2%
Township	Richfield	355,860	(3,378)	-0.9%	364,264	0	364,264	8,404	2.4%
Township	Roscommon	355,419	(3,980)	-1.1%	364,320	0	364,320	8,901	2.5%
Village	Roscommon	127,273	(2,913)	-2.2%	129,887	0	129,887	2,614	2.1%

ESTIMATED REVENUE SHARING PAYMENTS TO LOCAL UNITS FOR FY 2001-02 AND 2002-03

Local Unit Type	Name	FY 2001-02			FY 2002-03			Change From FY 2001-02	
		Final Payment	Change From FY 2000-01 Amount	Percent	Estimated Total Payment	Grants to Locals	Estimated Adjusted Payment	Amount	Percent
Saginaw County		4,660,449	(236,458)	-4.8%	4,535,036	125,413	4,660,449	0	0.0%
Township	Albee	181,569	838	0.5%	189,145	0	189,145	7,576	4.2%
Township	Birch Run	341,238	26	0.0%	354,600	0	354,600	13,362	3.9%
Township	Blumfield	154,862	(321)	-0.2%	160,474	0	160,474	5,612	3.6%
Township	Brady	163,536	(241)	-0.1%	168,450	0	168,450	4,914	3.0%
Township	Brant	165,446	(914)	-0.5%	171,203	0	171,203	5,757	3.5%
Township	Bridgeport	1,164,276	(6,932)	-0.6%	1,199,095	0	1,199,095	34,819	3.0%
Township	Buena Vista	1,134,721	(55,969)	-4.7%	1,139,887	0	1,139,887	5,166	0.5%
Township	Carrollton	734,664	54,420	8.0%	784,294	0	784,294	49,630	6.8%
Township	Chapin	88,659	6,327	7.7%	92,155	0	92,155	3,496	3.9%
Township	Chesaning	184,130	(1,808)	-1.0%	189,624	0	189,624	5,494	3.0%
Township	Frankenmuth	158,534	(2,560)	-1.6%	163,981	0	163,981	5,447	3.4%
Township	Fremont	160,132	526	0.3%	166,791	0	166,791	6,659	4.2%
Township	James	157,843	(439)	-0.3%	163,096	0	163,096	5,253	3.3%
Township	Jonesfield	74,577	(3,680)	-4.7%	76,817	0	76,817	2,240	3.0%
Township	Kochville	257,273	(2,388)	-0.9%	265,200	0	265,200	7,927	3.1%
Township	Lakefield	90,508	1,665	1.9%	93,649	0	93,649	3,141	3.5%
Township	Maple Grove	204,113	(317)	-0.2%	212,617	0	212,617	8,504	4.2%
Township	Marion	88,614	(93)	-0.1%	90,796	0	90,796	2,182	2.5%
Township	Richland	380,959	(5,557)	-1.4%	391,137	0	391,137	10,178	2.7%
Township	Saginaw	3,500,937	(34,517)	-1.0%	3,603,209	0	3,603,209	102,272	2.9%
Township	St Charles	108,941	(10,628)	-8.9%	112,231	0	112,231	3,290	3.0%
Township	Spaulding	208,401	(560)	-0.3%	216,345	0	216,345	7,944	3.8%
Township	Swan Creek	186,912	(688)	-0.4%	193,318	0	193,318	6,406	3.4%
Township	Taymouth	363,802	1,662	0.5%	379,728	0	379,728	15,926	4.4%
Township	Thomas	992,724	18,277	1.9%	1,025,944	0	1,025,944	33,220	3.3%
Township	Tittabawassee	560,356	(9,657)	-1.7%	576,591	0	576,591	16,235	2.9%
Township	Zilwaukee	7,378	(2,167)	-22.7%	7,169	209	7,378	0	0.0%
City	Frankenmuth	457,974	(12,181)	-2.6%	464,247	0	464,247	6,273	1.4%
City	Saginaw	12,747,171	(660,520)	-4.9%	12,590,417	156,754	12,747,171	0	0.0%
City	Zilwaukee	233,425	(13,766)	-5.6%	234,362	0	234,362	937	0.4%
Village	Birch Run	131,943	(931)	-0.7%	136,357	0	136,357	4,414	3.3%
Village	Chesaning	299,957	(9,132)	-3.0%	304,567	0	304,567	4,610	1.5%
Village	Merrill	97,648	1,128	1.2%	99,205	0	99,205	1,557	1.6%
Village	Oakley	31,338	(275)	-0.9%	32,443	0	32,443	1,105	3.5%

ESTIMATED REVENUE SHARING PAYMENTS TO LOCAL UNITS FOR FY 2001-02 AND 2002-03

Local Unit Type	Name	FY 2001-02			FY 2002-03			Change From FY 2001-02	
		Final Payment	Change From FY 2000-01		Estimated Total Payment	Grants to Locals	Estimated Adjusted Payment	Amount	Percent
			Amount	Percent					
Village	St Charles	266,671	8,123	3.1%	270,472	0	270,472	3,801	1.4%
St Clair County		3,633,065	(185,642)	-4.9%	3,534,110	98,955	3,633,065	0	0.0%
Township	Berlin	241,226	(81)	0.0%	250,216	0	250,216	8,990	3.7%
Township	Brockway	157,082	(1,408)	-0.9%	161,318	0	161,318	4,236	2.7%
Township	Burtchville	309,367	(440)	-0.1%	320,530	0	320,530	11,163	3.6%
Township	Casco	361,734	374	0.1%	376,042	0	376,042	14,308	4.0%
Township	China	252,021	(1,237)	-0.5%	260,384	0	260,384	8,363	3.3%
Township	Clay	777,476	(5,147)	-0.7%	802,337	0	802,337	24,861	3.2%
Township	Clyde	418,700	17,922	4.5%	436,527	0	436,527	17,827	4.3%
Township	Columbus	343,426	1,666	0.5%	357,483	0	357,483	14,057	4.1%
Township	Cottrellville	284,685	1,556	0.6%	296,124	0	296,124	11,439	4.0%
Township	East China	299,109	(5,200)	-1.7%	305,795	0	305,795	6,686	2.2%
Township	Emmett	172,053	(796)	-0.5%	177,867	0	177,867	5,814	3.4%
Township	Fort Gratiot	830,502	(2,043)	-0.2%	860,665	0	860,665	30,163	3.6%
Township	Grant	138,026	(1,524)	-1.1%	141,711	0	141,711	3,685	2.7%
Township	Greenwood	101,846	(649)	-0.6%	105,621	0	105,621	3,775	3.7%
Township	Ira	563,380	(1,189)	-0.2%	582,681	0	582,681	19,301	3.4%
Township	Kenockee	190,129	(494)	-0.3%	196,798	0	196,798	6,669	3.5%
Township	Kimball	664,684	(601)	-0.1%	690,728	0	690,728	26,044	3.9%
Township	Lynn	91,127	49	0.1%	94,786	0	94,786	3,659	4.0%
Township	Mussey	147,056	(105)	-0.1%	152,354	0	152,354	5,298	3.6%
Township	Port Huron	720,741	(13,647)	-1.9%	741,578	0	741,578	20,837	2.9%
Township	Riley	224,993	546	0.2%	234,272	0	234,272	9,279	4.1%
Township	St Clair	470,841	2,746	0.6%	490,933	0	490,933	20,092	4.3%
Township	Wales	223,047	598	0.3%	232,442	0	232,442	9,395	4.2%
City	Algonac	516,533	(22,989)	-4.3%	522,634	0	522,634	6,101	1.2%
City	Marine City	613,311	(32,662)	-5.1%	609,234	4,077	613,311	0	0.0%
City	Marysville	1,295,545	(76,903)	-5.6%	1,271,535	24,010	1,295,545	0	0.0%
City	Memphis							<i>Split Unit: See Memphis in Macomb County</i>	
City	Port Huron	4,952,095	(245,668)	-4.7%	4,909,899	42,196	4,952,095	0	0.0%
City	Richmond							<i>Split Unit: See Richmond in Macomb County</i>	
City	St Clair	628,402	(24,218)	-3.7%	628,993	0	628,993	591	0.1%
City	Yale	249,148	12,083	5.1%	252,623	0	252,623	3,475	1.4%
Village	Capac	263,270	(11,960)	-4.3%	259,171	4,099	263,270	0	0.0%
Village	Emmett	24,243	(2,141)	-8.1%	24,496	0	24,496	253	1.0%

ESTIMATED REVENUE SHARING PAYMENTS TO LOCAL UNITS FOR FY 2001-02 AND 2002-03

Local Unit Type	Name	FY 2001-02			FY 2002-03			Change From FY 2001-02	
		Final Payment	Change From FY 2000-01 Amount	Percent	Estimated Total Payment	Grants to Locals	Estimated Adjusted Payment	Amount	Percent
St Joseph County		1,407,979	(70,507)	-4.8%	1,370,434	37,545	1,407,979	0	0.0%
Township	Burr Oak	148,541	22	0.0%	155,053	0	155,053	6,512	4.4%
Township	Colon	166,341	1,361	0.8%	172,504	0	172,504	6,163	3.7%
Township	Constantine	157,988	(346)	-0.2%	163,746	0	163,746	5,758	3.6%
Township	Fabius	237,814	1,412	0.6%	248,141	0	248,141	10,327	4.3%
Township	Fawn River	126,046	4,471	3.7%	131,743	0	131,743	5,697	4.5%
Township	Florence	111,147	185	0.2%	116,168	0	116,168	5,021	4.5%
Township	Flowerfield	121,460	171	0.1%	125,623	0	125,623	4,163	3.4%
Township	Leonidas	100,540	1,063	1.1%	104,380	0	104,380	3,840	3.8%
Township	Lockport	285,471	785	0.3%	297,563	0	297,563	12,092	4.2%
Township	Mendon	149,733	(1,162)	-0.8%	153,450	0	153,450	3,717	2.5%
Township	Mottville	113,265	(143)	-0.1%	117,832	0	117,832	4,567	4.0%
Township	Nottawa	195,830	(533)	-0.3%	202,635	0	202,635	6,805	3.5%
Township	Park	211,341	(1,181)	-0.6%	218,277	0	218,277	6,936	3.3%
Township	Sherman	242,290	8,591	3.7%	252,748	0	252,748	10,458	4.3%
Township	Sturgis	178,904	1,499	0.8%	188,238	0	188,238	9,334	5.2%
Township	White Pigeon	164,103	(30)	0.0%	170,507	0	170,507	6,404	3.9%
City	Sturgis	1,281,036	(26,925)	-2.1%	1,297,130	0	1,297,130	16,094	1.3%
City	Three Rivers	1,110,221	(67,914)	-5.8%	1,109,058	1,163	1,110,221	0	0.0%
Village	Burr Oak	119,146	(4,422)	-3.6%	120,348	0	120,348	1,202	1.0%
Village	Centreville	183,454	6,501	3.7%	187,561	0	187,561	4,107	2.2%
Village	Colon	143,427	(5,193)	-3.5%	144,127	0	144,127	700	0.5%
Village	Constantine	265,962	(12,420)	-4.5%	265,299	663	265,962	0	0.0%
Village	Mendon	95,395	(3,210)	-3.3%	94,715	680	95,395	0	0.0%
Village	White Pigeon	189,725	(6,819)	-3.5%	192,511	0	192,511	2,786	1.5%
Sanilac County		936,739	(50,347)	-5.1%	909,858	26,881	936,739	0	0.0%
Township	Argyle	64,933	(305)	-0.5%	67,081	0	67,081	2,148	3.3%
Township	Austin	54,932	(196)	-0.4%	56,867	0	56,867	1,935	3.5%
Township	Bridgehampton	58,408	114	0.2%	60,601	0	60,601	2,193	3.8%
Township	Buel	96,765	(298)	-0.3%	100,368	0	100,368	3,603	3.7%
Township	Custer	82,610	(187)	-0.2%	85,654	0	85,654	3,044	3.7%
Township	Delaware	63,541	(662)	-1.0%	65,364	0	65,364	1,823	2.9%
Township	Elk	78,080	(403)	-0.5%	80,605	0	80,605	2,525	3.2%
Township	Elmer	62,150	(562)	-0.9%	64,287	0	64,287	2,137	3.4%

ESTIMATED REVENUE SHARING PAYMENTS TO LOCAL UNITS FOR FY 2001-02 AND 2002-03

Local Unit Type	Name	FY 2001-02			FY 2002-03			Change From FY 2001-02	
		Final Payment	Change From FY 2000-01 Amount	Percent	Estimated Total Payment	Grants to Locals	Estimated Adjusted Payment	Amount	Percent
Township	Evergreen	79,809	4,774	6.4%	83,201	0	83,201	3,392	4.3%
Township	Flynn	82,360	(244)	-0.3%	85,558	0	85,558	3,198	3.9%
Township	Forester	79,792	460	0.6%	83,206	0	83,206	3,414	4.3%
Township	Fremont	73,097	(188)	-0.3%	75,612	0	75,612	2,515	3.4%
Township	Greenleaf	63,375	688	1.1%	65,440	0	65,440	2,065	3.3%
Township	Lamotte	81,408	(146)	-0.2%	84,379	0	84,379	2,971	3.6%
Township	Lexington	187,820	836	0.4%	195,542	0	195,542	7,722	4.1%
Township	Maple Valley	89,056	4,032	4.7%	92,209	0	92,209	3,153	3.5%
Township	Marion	65,690	(95)	-0.1%	67,947	0	67,947	2,257	3.4%
Township	Marlette	169,278	(406)	-0.2%	174,763	0	174,763	5,485	3.2%
Township	Minden	31,315	(2,986)	-8.7%	32,257	0	32,257	942	3.0%
Township	Moore	109,549	(1,713)	-1.5%	113,341	0	113,341	3,792	3.5%
Township	Sanilac	142,166	468	0.3%	147,945	0	147,945	5,779	4.1%
Township	Speaker	99,135	566	0.6%	102,463	0	102,463	3,328	3.4%
Township	Washington	75,001	47	0.1%	77,854	0	77,854	2,853	3.8%
Township	Watertown	111,400	(563)	-0.5%	114,985	0	114,985	3,585	3.2%
Township	Wheatland	41,687	(234)	-0.6%	43,066	0	43,066	1,379	3.3%
Township	Worth	295,868	1,664	0.6%	308,457	0	308,457	12,589	4.3%
City	Brown City	191,010	3,555	1.9%	192,279	0	192,279	1,269	0.7%
City	Croswell	367,147	(8,406)	-2.2%	364,831	2,316	367,147	0	0.0%
City	Marlette	288,428	(532)	-0.2%	289,792	0	289,792	1,364	0.5%
City	Sandusky	351,326	(14,023)	-3.8%	352,078	0	352,078	752	0.2%
Village	Applegate	32,792	1,595	5.1%	33,754	0	33,754	962	2.9%
Village	Carsonville	75,639	(2,861)	-3.6%	75,641	0	75,641	2	0.0%
Village	Deckerville	131,505	(4,976)	-3.6%	129,449	2,056	131,505	0	0.0%
Village	Forestville	12,317	(2,345)	-16.0%	12,400	0	12,400	83	0.7%
Village	Lexington	96,300	(1,665)	-1.7%	98,154	0	98,154	1,854	1.9%
Village	Melvin	15,091	1,118	8.0%	16,298	0	16,298	1,207	8.0%
Village	Minden City	32,079	939	3.0%	32,277	0	32,277	198	0.6%
Village	Peck	73,496	3,595	5.1%	74,519	0	74,519	1,023	1.4%
Village	Port Sanilac	67,297	(3,606)	-5.1%	67,570	0	67,570	273	0.4%
Schoolcraft County		183,659	(9,952)	-5.1%	178,308	5,352	183,659	0	0.0%
Township	Doyle	46,903	93	0.2%	48,709	0	48,709	1,806	3.9%
Township	Germfask	43,925	(498)	-1.1%	45,056	0	45,056	1,131	2.6%
Township	Hiawatha	97,121	654	0.7%	101,339	0	101,339	4,218	4.3%

ESTIMATED REVENUE SHARING PAYMENTS TO LOCAL UNITS FOR FY 2001-02 AND 2002-03

Local Unit Type	Name	FY 2001-02			FY 2002-03			Change From FY 2001-02	
		Final Payment	Change From FY 2000-01 Amount	Percent	Estimated Total Payment	Grants to Locals	Estimated Adjusted Payment	Amount	Percent
Township	Inwood	54,742	(147)	-0.3%	56,700	0	56,700	1,958	3.6%
Township	Manistique	80,300	184	0.2%	83,818	0	83,818	3,518	4.4%
Township	Mueller	18,561	(103)	-0.6%	19,175	0	19,175	614	3.3%
Township	Seney	13,430	(36)	-0.3%	13,954	0	13,954	524	3.9%
Township	Thompson	48,969	123	0.3%	50,895	0	50,895	1,926	3.9%
City	Manistique	527,246	(11,058)	-2.1%	524,660	2,586	527,246	0	0.0%
Shiawassee County		1,476,158	(80,990)	-5.2%	1,433,020	43,137	1,476,158	0	0.0%
Township	Antrim	159,602	551	0.3%	165,698	0	165,698	6,096	3.8%
Township	Bennington	246,227	(2,367)	-1.0%	253,789	0	253,789	7,562	3.1%
Township	Burns	226,036	(368)	-0.2%	234,814	0	234,814	8,778	3.9%
Township	Caledonia	337,613	893	0.3%	350,553	0	350,553	12,940	3.8%
Township	Fairfield	61,058	(1,415)	-2.3%	63,180	0	63,180	2,122	3.5%
Township	Hazelton	125,384	(3,481)	-2.7%	129,694	0	129,694	4,310	3.4%
Township	Middlebury	119,805	105	0.1%	124,114	0	124,114	4,309	3.6%
Township	New Haven	106,038	(905)	-0.8%	109,380	0	109,380	3,342	3.2%
Township	Owosso	391,637	(3,559)	-0.9%	402,904	0	402,904	11,267	2.9%
Township	Perry	284,493	(938)	-0.3%	294,784	0	294,784	10,291	3.6%
Township	Rush	117,823	(488)	-0.4%	121,682	0	121,682	3,859	3.3%
Township	Sciota	144,351	1,125	0.8%	149,986	0	149,986	5,635	3.9%
Township	Shiawassee	179,657	3,363	1.9%	186,277	0	186,277	6,620	3.7%
Township	Venice	164,971	(5,714)	-3.3%	171,832	0	171,832	6,861	4.2%
Township	Vernon	331,810	(378)	-0.1%	344,007	0	344,007	12,197	3.7%
Township	Woodhull	300,138	5,084	1.7%	311,386	0	311,386	11,248	3.7%
City	Corunna	434,624	12,740	3.0%	439,233	0	439,233	4,609	1.1%
City	Durand	633,376	(28,740)	-4.3%	628,107	5,269	633,376	0	0.0%
City	Laingsburg	170,094	12,477	7.9%	170,893	0	170,893	799	0.5%
City	Owosso	2,143,977	(31,009)	-1.4%	2,158,569	0	2,158,569	14,592	0.7%
City	Perry	257,721	(10,188)	-3.8%	259,377	0	259,377	1,656	0.6%
Village	Bancroft	76,077	5,635	8.0%	78,993	0	78,993	2,916	3.8%
Village	Byron	70,143	2,680	4.0%	71,760	0	71,760	1,617	2.3%
Village	Lennon	55,274	(1,060)	-1.9%	56,143	0	56,143	869	1.6%
Village	Morrice	106,608	(3,218)	-2.9%	107,689	0	107,689	1,081	1.0%
Village	New Lothrop	66,719	91	0.1%	67,058	0	67,058	339	0.5%
Village	Ovid								
Village	Vernon	104,169	(2,823)	-2.6%	105,367	0	105,367	1,198	1.2%

Split Unit: See Ovid in Clinton County

ESTIMATED REVENUE SHARING PAYMENTS TO LOCAL UNITS FOR FY 2001-02 AND 2002-03

Local Unit Type	Name	FY 2001-02			FY 2002-03			Change From FY 2001-02	
		Final Payment	Change From FY 2000-01		Estimated Total Payment	Grants to Locals	Estimated Adjusted Payment	Amount	Percent
			Amount	Percent					
Tuscola County		1,174,315	(65,599)	-5.3%	1,139,385	34,930	1,174,315	0	0.0%
Township	Akron	105,335	(3,172)	-2.9%	108,401	0	108,401	3,066	2.9%
Township	Almer	178,910	(755)	-0.4%	185,006	0	185,006	6,096	3.4%
Township	Arbela	287,513	(986)	-0.3%	296,187	0	296,187	8,674	3.0%
Township	Columbia	64,796	(513)	-0.8%	66,743	0	66,743	1,947	3.0%
Township	Dayton	150,170	(281)	-0.2%	155,602	0	155,602	5,432	3.6%
Township	Denmark	141,597	127	0.1%	147,026	0	147,026	5,429	3.8%
Township	Elkland	81,339	(10,583)	-11.5%	83,532	0	83,532	2,193	2.7%
Township	Ellington	116,744	3,805	3.4%	120,184	0	120,184	3,440	2.9%
Township	Elmwood	70,012	(7,371)	-9.5%	71,644	0	71,644	1,632	2.3%
Township	Fairgrove	75,492	(1,664)	-2.2%	77,834	0	77,834	2,342	3.1%
Township	Fremont	194,568	(190)	-0.1%	202,056	0	202,056	7,488	3.8%
Township	Gilford	65,115	(319)	-0.5%	67,311	0	67,311	2,196	3.4%
Township	Indianfields	223,267	(7,828)	-3.4%	229,725	0	229,725	6,458	2.9%
Township	Juniata	146,128	(962)	-0.7%	150,555	0	150,555	4,427	3.0%
Township	Kingston	97,884	6,099	6.6%	101,977	0	101,977	4,093	4.2%
Township	Koylton	122,414	7,837	6.8%	127,411	0	127,411	4,997	4.1%
Township	Millington	259,063	3,600	1.4%	268,726	0	268,726	9,663	3.7%
Township	Novesta	136,706	9,167	7.2%	141,487	0	141,487	4,781	3.5%
Township	Tuscola	173,578	(310)	-0.2%	179,718	0	179,718	6,140	3.5%
Township	Vassar	366,766	(81)	0.0%	380,446	0	380,446	13,680	3.7%
Township	Watertown	179,114	4,870	2.8%	186,642	0	186,642	7,528	4.2%
Township	Wells	162,174	103	0.1%	168,827	0	168,827	6,653	4.1%
Township	Wisner	62,777	(1,755)	-2.7%	64,773	0	64,773	1,996	3.2%
City	Vassar	447,923	(20,081)	-4.3%	443,633	4,290	447,923	0	0.0%
Village	Akron	55,786	4,132	8.0%	60,249	0	60,249	4,463	8.0%
Village	Caro	521,835	(16,328)	-3.0%	526,512	0	526,512	4,677	0.9%
Village	Cass City	329,439	(10,192)	-3.0%	332,457	0	332,457	3,018	0.9%
Village	Fairgrove	75,050	5,322	7.6%	77,388	0	77,388	2,338	3.1%
Village	Gagetown	54,765	(830)	-1.5%	55,206	0	55,206	441	0.8%
Village	Kingston	64,477	4,776	8.0%	65,619	0	65,619	1,142	1.8%
Village	Mayville	140,013	336	0.2%	141,921	0	141,921	1,908	1.4%
Village	Millington	142,322	(163)	-0.1%	144,042	0	144,042	1,720	1.2%
Village	Reese	166,000	(3,938)	-2.3%	168,003	0	168,003	2,003	1.2%
Village	Unionville	81,100	6,007	8.0%	82,426	0	82,426	1,326	1.6%

ESTIMATED REVENUE SHARING PAYMENTS TO LOCAL UNITS FOR FY 2001-02 AND 2002-03

Local Unit Type	Name	FY 2001-02			FY 2002-03			Change From FY 2001-02	
		Final Payment	Change From FY 2000-01 Amount	Percent	Estimated Total Payment	Grants to Locals	Estimated Adjusted Payment	Amount	Percent
Van Buren County		1,577,061	(86,201)	-5.2%	1,531,116	45,945	1,577,061	0	0.0%
Township	Almena	334,870	1,657	0.5%	346,426	0	346,426	11,556	3.5%
Township	Antwerp	483,932	(889)	-0.2%	501,330	0	501,330	17,398	3.6%
Township	Arlington	185,442	9,063	5.1%	191,262	0	191,262	5,820	3.1%
Township	Bangor	202,919	11,706	6.1%	208,484	0	208,484	5,565	2.7%
Township	Bloomingtondale	244,097	(2,782)	-1.1%	250,801	0	250,801	6,704	2.7%
Township	Columbia	222,627	2,987	1.4%	228,859	0	228,859	6,232	2.8%
Township	Covert	251,052	(2,808)	-1.1%	258,037	0	258,037	6,985	2.8%
Township	Decatur	169,630	(1,405)	-0.8%	174,618	0	174,618	4,988	2.9%
Township	Geneva	374,004	(323)	-0.1%	387,570	0	387,570	13,566	3.6%
Township	Hamilton	154,509	(1,290)	-0.8%	159,697	0	159,697	5,188	3.4%
Township	Hartford	276,705	(6,365)	-2.2%	295,645	0	295,645	18,940	6.8%
Township	Keeler	202,016	(439)	-0.2%	209,043	0	209,043	7,027	3.5%
Township	Lawrence	189,282	(2,186)	-1.1%	194,268	0	194,268	4,986	2.6%
Township	Paw Paw	295,731	(1,631)	-0.5%	305,583	0	305,583	9,852	3.3%
Township	Pine Grove	253,526	(2,802)	-1.1%	260,002	0	260,002	6,476	2.6%
Township	Porter	188,654	(963)	-0.5%	195,005	0	195,005	6,351	3.4%
Township	South Haven	369,460	(14,556)	-3.8%	382,858	0	382,858	13,398	3.6%
Township	Waverly	221,968	(2,234)	-1.0%	228,715	0	228,715	6,747	3.0%
City	Bangor	326,205	(268)	-0.1%	326,067	138	326,205	0	0.0%
City	Gobles	123,525	6,699	5.7%	124,741	0	124,741	1,216	1.0%
City	Hartford	385,963	12,944	3.5%	390,173	0	390,173	4,210	1.1%
City	South Haven	603,147	(84,305)	-12.3%	597,304	5,843	603,147	0	0.0%
Village	Bloomingtondale	71,765	5,316	8.0%	77,506	0	77,506	5,741	8.0%
Village	Breedsville	26,989	(197)	-0.7%	27,591	0	27,591	602	2.2%
Village	Decatur	244,689	16,359	7.2%	247,527	0	247,527	2,838	1.2%
Village	Lawrence	147,037	(2,364)	-1.6%	148,940	0	148,940	1,903	1.3%
Village	Lawton	243,113	(8,314)	-3.3%	243,342	0	243,342	229	0.1%
Village	Mattawan	226,928	3,060	1.4%	233,709	0	233,709	6,781	3.0%
Village	Paw Paw	411,916	(18,718)	-4.3%	417,989	0	417,989	6,073	1.5%
Washtenaw County		6,705,095	(363,446)	-5.1%	6,510,399	194,696	6,705,095	0	0.0%
Township	Ann Arbor	342,145	(3,587)	-1.0%	350,371	0	350,371	8,226	2.4%
Township	Augusta	382,458	(1,224)	-0.3%	394,527	0	394,527	12,069	3.2%
Township	Bridgewater	123,578	(111)	-0.1%	128,219	0	128,219	4,641	3.8%

ESTIMATED REVENUE SHARING PAYMENTS TO LOCAL UNITS FOR FY 2001-02 AND 2002-03

Local Unit Type	Name	FY 2001-02			FY 2002-03			Change From FY 2001-02	
		Final Payment	Change From FY 2000-01 Amount	Percent	Estimated Total Payment	Grants to Locals	Estimated Adjusted Payment	Amount	Percent
Township	Dexter	388,112	999	0.3%	403,805	0	403,805	15,693	4.0%
Township	Freedom	114,803	226	0.2%	119,398	0	119,398	4,595	4.0%
Township	Lima	183,196	466	0.3%	190,483	0	190,483	7,287	4.0%
Township	Lodi	426,450	(92)	0.0%	442,367	0	442,367	15,917	3.7%
Township	Lyndon	186,312	894	0.5%	194,736	0	194,736	8,424	4.5%
Township	Manchester	146,045	(332)	-0.2%	151,017	0	151,017	4,972	3.4%
Township	Northfield	716,841	(13,872)	-1.9%	731,115	0	731,115	14,274	2.0%
Township	Pittsfield	2,503,056	(24,730)	-1.0%	2,573,275	0	2,573,275	70,219	2.8%
Township	Salem	402,208	2,177	0.5%	419,591	0	419,591	17,383	4.3%
Township	Saline	99,030	(221)	-0.2%	102,390	0	102,390	3,360	3.4%
Township	Scio	1,012,802	(2,886)	-0.3%	1,047,199	0	1,047,199	34,397	3.4%
Township	Sharon	122,885	500	0.4%	127,852	0	127,852	4,967	4.0%
Township	Superior	915,316	(7,803)	-0.8%	942,238	0	942,238	26,922	2.9%
Township	Sylvan	200,400	(116)	-0.1%	207,705	0	207,705	7,305	3.6%
Township	Webster	379,177	920	0.2%	394,275	0	394,275	15,098	4.0%
Township	York	488,899	98	0.0%	505,397	0	505,397	16,498	3.4%
Township	Ypsilanti	5,361,599	11,026	0.2%	5,405,908	0	5,405,908	44,309	0.8%
City	Ann Arbor	13,524,915	(560,248)	-4.0%	13,524,174	741	13,524,915	0	0.0%
City	Milan	537,936	(23,782)	-4.2%	536,397	1,539	537,936	0	0.0%
City	Saline	967,749	(49,345)	-4.9%	957,987	9,762	967,749	0	0.0%
City	Ypsilanti	3,802,595	(167,753)	-4.2%	3,782,862	19,733	3,802,595	0	0.0%
Village	Barton Hills	30,335	(1,515)	-4.8%	30,703	0	30,703	368	1.2%
Village	Chelsea	523,346	(27,599)	-5.0%	517,454	5,892	523,346	0	0.0%
Village	Dexter	226,307	(7,644)	-3.3%	227,473	0	227,473	1,166	0.5%
Village	Manchester	248,340	(11,626)	-4.5%	246,881	1,459	248,340	0	0.0%
Wayne County		50,913,155	(2,327,575)	-4.4%	49,671,084	1,242,071	50,913,155	0	0.0%
Township	Brownstown	2,790,283	(188,850)	-6.3%	2,730,001	60,282	2,790,283	0	0.0%
Township	Canton	7,092,565	(123,667)	-1.7%	7,247,231	0	7,247,231	154,666	2.2%
Township	Grosse Ile	1,072,895	(31,416)	-2.8%	1,084,709	0	1,084,709	11,814	1.1%
Township	Grosse Pointe	35	(10)	-22.2%	31	4	35	0	0.0%
Township	Huron	1,227,480	2,792	0.2%	1,261,256	0	1,261,256	33,776	2.8%
Township	Northville	1,723,202	(18,379)	-1.1%	1,773,188	0	1,773,188	49,986	2.9%
Township	Plymouth	2,526,318	(53,486)	-2.1%	2,567,816	0	2,567,816	41,498	1.6%
Township	Redford	6,882,201	(302,605)	-4.2%	6,901,993	0	6,901,993	19,792	0.3%
Township	Sumpter	1,096,722	75,075	7.3%	1,109,249	0	1,109,249	12,527	1.1%

ESTIMATED REVENUE SHARING PAYMENTS TO LOCAL UNITS FOR FY 2001-02 AND 2002-03

Local Unit Type	Name	FY 2001-02			FY 2002-03			Change From FY 2001-02	
		Final Payment	Change From FY 2000-01 Amount	Percent	Estimated Total Payment	Grants to Locals	Estimated Adjusted Payment	Amount	Percent
Township	Vanburen	2,391,525	(100,624)	-4.0%	2,413,916	0	2,413,916	22,391	0.9%
City	Allen Park	3,434,944	(260,854)	-7.1%	3,429,978	4,966	3,434,944	0	0.0%
City	Belleville	459,982	(14,352)	-3.0%	466,583	0	466,583	6,601	1.4%
City	Dearborn	11,767,042	(515,712)	-4.2%	11,737,610	29,432	11,767,042	0	0.0%
City	Dearborn Heights	7,034,875	(231,297)	-3.2%	7,093,632	0	7,093,632	58,757	0.8%
City	Detroit	333,900,000	0	0.0%	333,900,000	0	333,900,000	0	0.0%
City	Ecorse	2,341,825	(352,826)	-13.1%	2,274,237	67,588	2,341,825	0	0.0%
City	Flat Rock	979,312	(59,660)	-5.7%	974,026	5,286	979,312	0	0.0%
City	Garden	3,932,669	(127,498)	-3.1%	3,961,273	0	3,961,273	28,604	0.7%
City	Gibraltar	518,315	(42,458)	-7.6%	512,910	5,405	518,315	0	0.0%
City	Grosse Pointe	605,570	(35,739)	-5.6%	605,995	0	605,995	425	0.1%
City	Grosse Pointe Farms	991,238	(71,021)	-6.7%	996,438	0	996,438	5,200	0.5%
City	Grosse Pointe Parks	1,340,740	(84,371)	-5.9%	1,344,151	0	1,344,151	3,411	0.3%
City	Grosse Pointe Woods	1,946,576	(155,278)	-7.4%	1,940,719	5,857	1,946,576	0	0.0%
City	Hamtramck	4,613,097	(249,258)	-5.1%	4,590,418	22,679	4,613,097	0	0.0%
City	Harper Woods	1,893,267	(199,765)	-9.5%	1,886,677	6,590	1,893,267	0	0.0%
City	Highland Park	4,565,535	(301,398)	-6.2%	4,439,482	126,053	4,565,535	0	0.0%
City	Inkster	5,250,616	195,691	3.9%	5,289,924	0	5,289,924	39,308	0.7%
City	Lincoln Park	6,327,480	(244,486)	-3.7%	6,342,914	0	6,342,914	15,434	0.2%
City	Livonia	10,848,806	(353,603)	-3.2%	10,934,609	0	10,934,609	85,803	0.8%
City	Melvindale	2,060,770	(131,824)	-6.0%	2,025,452	35,318	2,060,770	0	0.0%
City	Northville						<i>Split Unit: See Northville in Oakland County</i>		
City	Plymouth	1,070,049	(116,661)	-9.8%	1,059,014	11,035	1,070,049	0	0.0%
City	River Rouge	1,921,101	(453,154)	-19.1%	1,841,488	79,613	1,921,101	0	0.0%
City	Riverview	1,550,755	(74,819)	-4.6%	1,566,603	0	1,566,603	15,848	1.0%
City	Rockwood	394,809	(24,336)	-5.8%	408,627	0	408,627	13,818	3.5%
City	Romulus	2,710,336	(139,581)	-4.9%	2,694,826	15,510	2,710,336	0	0.0%
City	Southgate	3,871,041	(192,983)	-4.7%	3,865,882	5,159	3,871,041	0	0.0%
City	Taylor	9,725,136	(490,184)	-4.8%	9,637,597	87,539	9,725,136	0	0.0%
City	Trenton	2,752,621	(385,772)	-12.3%	2,697,525	55,096	2,752,621	0	0.0%
City	Wayne	2,767,360	(253,472)	-8.4%	2,698,896	68,464	2,767,360	0	0.0%
City	Westland	10,376,745	(189,657)	-1.8%	10,426,816	0	10,426,816	50,071	0.5%
City	Woodhaven	1,485,677	(71,207)	-4.6%	1,477,162	8,515	1,485,677	0	0.0%
City	Wyandotte	4,088,611	(199,688)	-4.7%	4,089,423	0	4,089,423	812	0.0%
Village	Grosse Pte Shores	280,961	(29,220)	-9.4%	281,750	0	281,750	789	0.3%

ESTIMATED REVENUE SHARING PAYMENTS TO LOCAL UNITS FOR FY 2001-02 AND 2002-03

Local Unit Type	Name	FY 2001-02			FY 2002-03			Change From FY 2001-02	
		Final Payment	Change From FY 2000-01 Amount	Percent	Estimated Total Payment	Grants to Locals	Estimated Adjusted Payment	Amount	Percent
Wexford County		650,670	(34,424)	-5.0%	632,487	18,183	650,670	0	0.0%
Township	Antioch	60,857	412	0.7%	63,522	0	63,522	2,665	4.4%
Township	Boon	41,303	(138)	-0.3%	42,741	0	42,741	1,438	3.5%
Township	Cedar Creek	116,024	(122)	-0.1%	120,515	0	120,515	4,491	3.9%
Township	Cherry Grove	172,626	497	0.3%	179,686	0	179,686	7,060	4.1%
Township	Clam Lake	172,763	(116)	-0.1%	178,872	0	178,872	6,109	3.5%
Township	Colfax	58,937	76	0.1%	61,211	0	61,211	2,274	3.9%
Township	Greenwood	41,800	48	0.1%	43,537	0	43,537	1,737	4.2%
Township	Hanover	47,284	216	0.5%	49,240	0	49,240	1,956	4.1%
Township	Haring	225,193	(1,246)	-0.6%	233,509	0	233,509	8,316	3.7%
Township	Henderson	13,516	546	4.2%	14,015	0	14,015	499	3.7%
Township	Liberty	61,866	316	0.5%	64,528	0	64,528	2,662	4.3%
Township	Selma	146,303	(324)	-0.2%	152,081	0	152,081	5,778	4.0%
Township	Slagle	40,922	(254)	-0.6%	42,642	0	42,642	1,720	4.2%
Township	South Branch	26,438	(242)	-0.9%	27,220	0	27,220	782	3.0%
Township	Springville	91,359	311	0.3%	95,403	0	95,403	4,044	4.4%
Township	Wexford	58,654	445	0.8%	61,073	0	61,073	2,419	4.1%
City	Cadillac	1,256,420	(44,732)	-3.4%	1,263,676	0	1,263,676	7,256	0.6%
City	Manton	168,765	11,849	7.6%	172,551	0	172,551	3,786	2.2%
Village	Buckley	56,876	(758)	-1.3%	57,646	0	57,646	770	1.4%
Village	Harrietta	15,692	1,162	8.0%	16,408	0	16,408	716	4.6%
Village	Mesick	50,757	(1,485)	-2.8%	52,126	0	52,126	1,369	2.7%

E:\SHARED\BARB\SEPtextNET.wpd